

Arches Lingo: An Application to Build and Use Authority Data

Part II: The user's Perspective



Presenter

Phil Carlisle

Historic England

Lingo: A user's perspective

Developed with the terminology specialist in mind

Allows for collaborative development

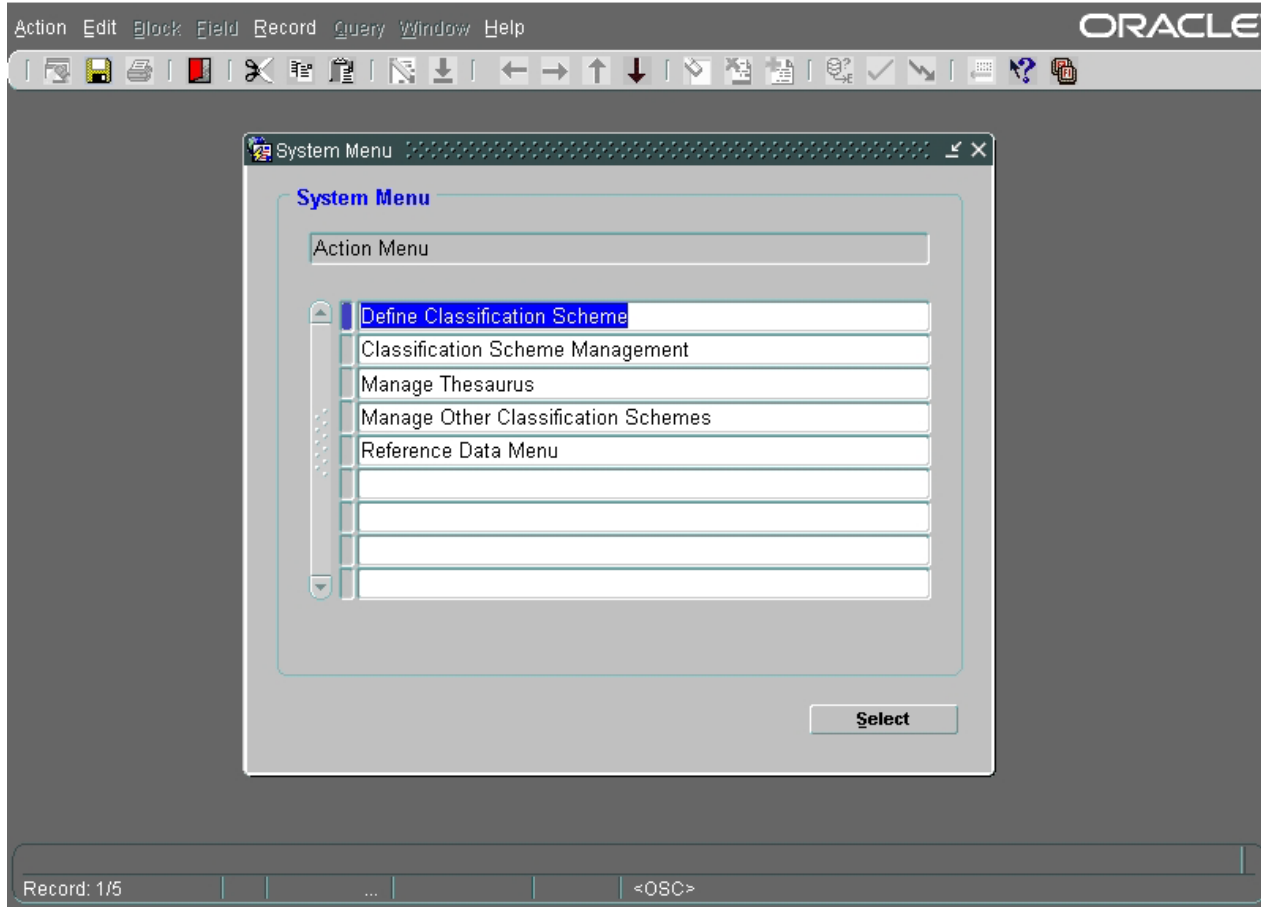
A tool for education

Underpinned by international standards

Developed for terminology specialists

- Vocabulary management is often an afterthought in the systems that use our terminologies
- Provides a 'one-stop shop' for development and dissemination
- Provides workflows for more complex processes such as splitting and merging
- Allows for the management of multiple schemes by multiple editors
- Up-to-date, modern software

From this...



- Developed in 1980s,
- ‘Guified’ in the 1990s
- Proprietary software (and no longer supported)
- Clunky (albeit lovable...)
- Add-on to inventory software

To this...

The screenshot displays the Arches Authority Data Manager (AADM) interface. The main panel shows the concept 'Pillbox (en-US)' with details such as Concept ID: 30003892, Scheme: Historic Monuments, and Type: Indexable Concept. The 'Concept Labels' section is active, showing a table with one label: 'Pillbox' in English (en-US) with a Preferred status. The 'Concept Editor Tools' panel on the right provides a form for adding or editing labels, including fields for 'Item Label', 'Language', 'Contributor(s)', 'References', and 'Warrant'. The interface is clean and modern, with a dark sidebar on the left and a top navigation bar.

- Cutting edge
- Open source
- Intuitive
- Designed with us in mind, based on real-world requirements

Allows for collaborative development

Arches Authority Data Manager (AADM)

Reference Date Manager Home Find... Search Options

Manage Concepts Manage People Manage Groups Manage Places Manage Periods

Concepts and Schemes

14 Schemes	342,112 Concepts	2,796,329 Labels	451,609 Relationships
------------	------------------	------------------	-----------------------

Schemes:

Most recently edited scheme	Last edited on	Editor
FISH Monuments	13:16:43 January 12, 2024	pclarisle
Architectural Components	9:33:11 December 22, 2023	jward
Maritime Objects	10:49:22 December 22, 2023	scakebread
FISH Monuments	14:38:19 November 18, 2023	pclarisle

Concepts:

Most recently edited concept	Last edited on	Editor
Containers (receptacles)	13:16:43 January 12, 2024	pclarisle
Containers by function or context	9:33:11 December 22, 2023	jward
Pillbox	10:49:22 December 22, 2023	scakebread
Geologic Materials	14:38:19 November 18, 2023	pclarisle

People and Groups

19,488 People	13,023 Groups
---------------	---------------

People:

Most recently edited person instance	Last edited on	Editor
Albert Einstein	13:16:43 January 12, 2024	pclarisle
Albert Camus	9:33:11 December 22, 2023	jward
Niels Bohr	10:49:22 December 22, 2023	scakebread
Isaac Newton	14:38:19 November 18, 2023	pclarisle

Groups:

Most recently edited group	Last edited on	Editor
Physicists	13:16:43 January 12, 2024	pclarisle
Heads of State	9:33:11 December 22, 2023	jward
Royal British Architects	10:49:22 December 22, 2023	scakebread
Geologic Society of America	14:38:19 November 18, 2023	pclarisle

Places and Periods


3,042,766 Places	5,863,352 Place Names	1,673 Periods	6,339 Period Names
------------------	-----------------------	---------------	--------------------

Places:

Most recently edited period instance	Last edited on	Editor
Mission District	13:16:43 January 12, 2024	pclarisle
Eggenberg	9:33:11 December 22, 2023	jward
Glarus	10:49:22 December 22, 2023	scakebread
Mogao Caves	14:38:19 November 18, 2023	pclarisle

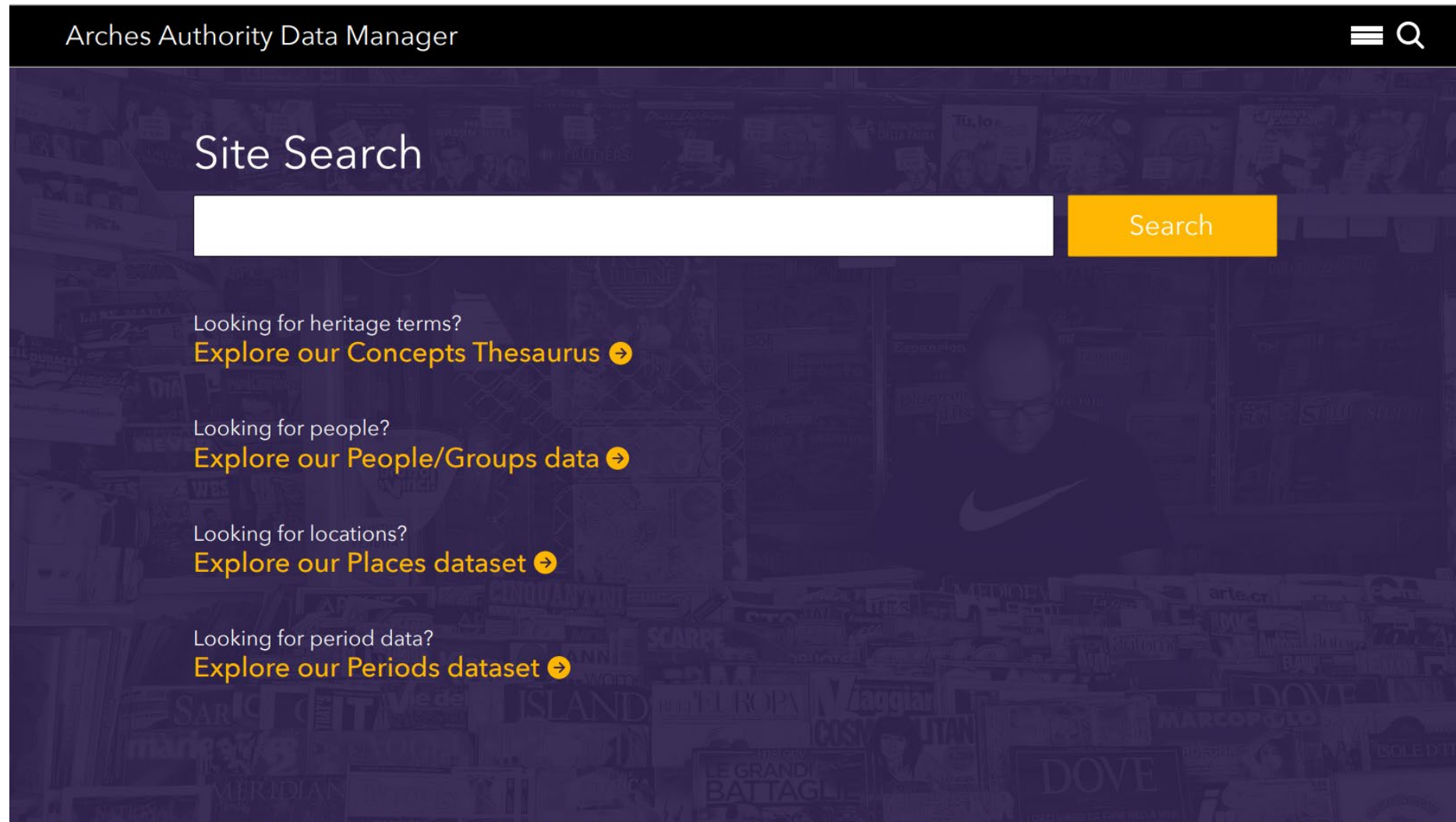
Periods:

Most recently edited period instance	Last edited on	Editor
Geologic Time Period	13:16:43 January 12, 2024	pclarisle
Art Deco Architectural Period	9:33:11 December 22, 2023	jward
Pointalist Painting Period	10:49:22 December 22, 2023	scakebread



- Allows for multiple editors
- ‘Provisional’ editing permissions
- Provides a central hub for community use

A tool for education: Search



The screenshot shows the 'Arches Authority Data Manager' interface. At the top left, the title 'Arches Authority Data Manager' is displayed in white on a black background. At the top right, there are icons for a menu (three horizontal lines) and a search (magnifying glass). Below the title bar, the main content area has a dark purple background with a collage of various text and images. The heading 'Site Search' is prominently displayed in white. Below it is a large white search input field, followed by a yellow 'Search' button. Underneath the search bar, there are four suggestions, each with a question and a link:

- Looking for heritage terms?
[Explore our Concepts Thesaurus](#) →
- Looking for people?
[Explore our People/Groups data](#) →
- Looking for locations?
[Explore our Places dataset](#) →
- Looking for period data?
[Explore our Periods dataset](#) →

Site Search

Search

342,112 Concepts

Categories ▼

Sort by ▼

- Stratford [Inhabited Place]**
(North and Central America > United States > Missouri > Greene)

Scope Note:
 Lorem ipsum dolor sit amet, consectetur adipiscing elit, sed do eiusmod tempor incididunt ut labore et dolore magna aliqua. Ut enim ad minim veniam, quis nostrud exercitation ullamco laboris nisi ut aliquip ex ea commodo consequat. Duis aute irure dolor in reprehenderit in voluptate velit esse cillum dolore eu fugiat nulla pariatur. Excepteur sint occaecat cupidatat non proident, sunt in culpa qui officia deserunt mollit anim id est laborum.

Associated Concepts: [slotted spoon](#)
- strawberry jars**
(Art and Architecture Thesaurus > Objects Facet > Furnishings and Equipment > Containers > << containers by function or context >> horticultural containers > < temporary alphabetical list: horticultural containers >>)

Scope Note:
 Lorem ipsum dolor sit amet, consectetur adipiscing elit, sed do eiusmod tempor incididunt ut labore et dolore magna aliqua. Ut enim ad minim veniam, quis nostrud exercitation ullamco laboris nisi ut aliquip ex ea commodo consequat. Duis aute irure dolor in reprehenderit in voluptate velit esse cillum dolore eu fugiat nulla pariatur. Excepteur sint occaecat cupidatat non proident, sunt in culpa qui officia deserunt mollit anim id est laborum.

Associated Concepts: none
- Stratford [Inhabited Place]**
(North and Central America > United States > Missouri > Greene)

Scope Note:
 Lorem ipsum dolor sit amet, consectetur adipiscing elit, sed do eiusmod tempor incididunt ut labore et dolore magna aliqua. Ut enim ad minim veniam, quis nostrud exercitation ullamco laboris nisi ut aliquip ex ea commodo consequat. Duis aute irure dolor in reprehenderit in voluptate velit esse cillum dolore eu fugiat nulla pariatur. Excepteur sint occaecat cupidatat non proident, sunt in culpa qui officia deserunt mollit anim id est laborum.

Associated Concepts: [slotted spoon](#)
- strawberry jars**
(Art and Architecture Thesaurus > Objects Facet > Furnishings and Equipment > Containers > << containers by function or context >> horticultural containers > < temporary alphabetical list: horticultural containers >>)

Scope Note:
 Lorem ipsum dolor sit amet, consectetur adipiscing elit, sed do eiusmod tempor incididunt ut labore et dolore magna aliqua. Ut enim ad minim veniam, quis nostrud exercitation ullamco laboris nisi ut aliquip ex ea commodo consequat. Duis aute irure dolor in reprehenderit in voluptate velit esse cillum dolore eu fugiat nulla pariatur. Excepteur sint occaecat cupidatat non proident, sunt in culpa qui officia deserunt mollit anim id est laborum.

Associated Concepts: none
- Stratford [Inhabited Place]**
(North and Central America > United States > Missouri > Greene)

Scope Note:
 Lorem ipsum dolor sit amet, consectetur adipiscing elit, sed do eiusmod tempor incididunt ut labore et dolore magna aliqua. Ut enim ad minim veniam, quis nostrud exercitation ullamco laboris nisi ut

Search Tools

Additional tools to help you find what you're looking for:

[Concepts and Hierarchies](#)
[Search Controlled Vocabularies](#)

[Actors and Agents](#)
[Search for People and Groups](#)

[Interested in Geography?](#)
[Search for Places](#)

[When did it happen?](#)
[Search for Periods](#)

[Export Data](#)
[Export and use our authoritative datasets](#)

A tool for education: Images

Arches Authority Data Manager (AADM)

Manage Concepts | Find... | Search Options

Show Hierarchy | Workflows | Reports

Pillbox (en-US) | Published | Manage Status

Concept ID: 30003892 | Scheme: Historic Monuments | Parent ID(s): 30003211 | Type: Indexable Concept | Candidate: No | Status: Active | Redirect: None | Export as: RDF | SKOS | JSON-LD

Labels | Notes | Relationships | Images | Visualize | Edit History

Concept Labels [expand all](#) [collapse all](#) | Add Labels

Label ID	Label	Label Type	Language
54009002	Pillbox	Preferred	English (en-US)
Contributors: English Heritage Bibliographic Sources: FISH Thesaurus Oxford Companion to Art (1986) From Date: To Date:			
54009003	Carton Pillata	Preferred	Spanish (es)
54009012	Pillbox (CE390)	Alternate	English (en-US)
54009013	Pillbox (CE120)	Alternate	English (en-US)
54009029	Pillbox	Hidden	English (en-US)

Concept Notes | Add Notes | No notes for this concept

Concept Images | Add Images | No images for this concept

Concept Relationships | Add Relationships | No relationships for this concept


Hierarchical Positions | Manage Position

Lineage 1 (Move concept to new position in hierarchy)
FISH Thesaurus of Heritage Objects
Military Objects
Military Structures
<defensive structures>
Pillbox

Lineage 2 (Move concept to new position in hierarchy)
FISH Thesaurus of Heritage Objects
Military Objects
<structures by form>
<block structures>
Pillbox

Concept Editor Tools | Selected Images [add images\(0\)](#)

Image 1 | Remove image



Title: Pillbox

Description: A potentially very long text describing the image goes here. It might require more than a single line of text to accommodate

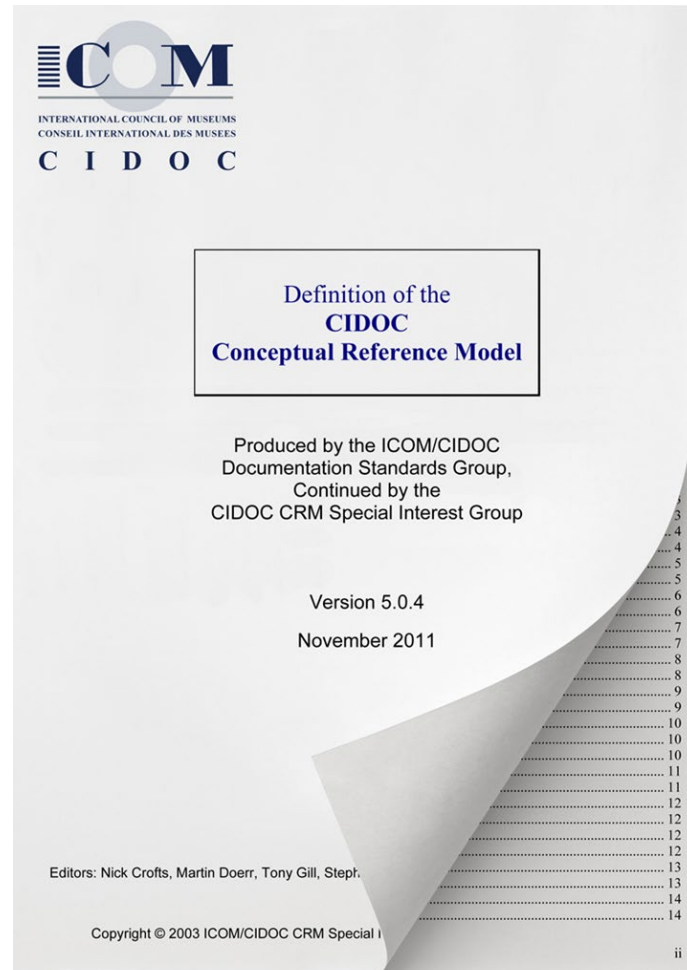
Rights: [Dropdown]

Image 2 | Remove image

Save | Cancel

- Expands upon both SKOS and ISO 25064
- Images help explain concepts to non-specialists - 'A picture paints a thousand words'

Supports International Standards



- Underlying semantic structure based on the CIDOC CRM (ISO 21127)
- Supports SKOS
- Supports ISO 25964
- Import/export in multiple formats

Speaking of data structures...

George Bruseker:
Modelling terminology with Arches

