

Things Unseen: Vision, Belief, and Experience in Medieval Manuscripts

July 12 to September 25, 2016

The J. Paul Getty Museum at the Getty Center



1. Unknown

[The Lamb Taking the Sealed Book and an Angel and the Elders Singing Praises](#), about 1255 - 1260

from Getty Apocalypse

Tempera colors, gold leaf, colored washes, pen and ink on parchment

Leaf: 31.9 × 22.5 cm (12 9/16 × 8 7/8 in.)

The J. Paul Getty Museum, Los Angeles

Ms. Ludwig III 1, fol. 5v (83.MC.72.5v)



2. Unknown

[The Opening of the First Seal: The First Horseman](#), about 1255 - 1260

from Getty Apocalypse

Tempera colors, gold leaf, colored washes, pen and ink on parchment

Leaf: 31.9 × 22.5 cm (12 9/16 × 8 7/8 in.)

The J. Paul Getty Museum, Los Angeles

Ms. Ludwig III 1, fol. 6 (83.MC.72.6)



3. Unknown

[Initial B: David Playing the Harp](#), about 1390

from Psalter

Tempera colors, gold leaf, and ink on parchment

Leaf: 22.4 × 16.8 cm (8 13/16 × 6 5/8 in.)

The J. Paul Getty Museum, Los Angeles

Ms. Ludwig VIII 5, fol. 13 (83.MK.96.13)



4. Follower of the Egerton Master

French / Netherlandish, active about 1405 - 1420

[A Woman in Prayer before the Virgin and Child](#), about 1410

from Book of Hours

Tempera colors, gold leaf, gold paint, and ink on parchment

Leaf: 19.1 × 14 cm (7 1/2 × 5 1/2 in.)

The J. Paul Getty Museum, Los Angeles

Ms. Ludwig IX 5, fol. 19 (83.ML.101.19)



5. Unknown
[Decorated Text Page](#), early 1460s
from Arenberg Hours
Tempera colors, gold leaf, and ink on parchment
Leaf: 25.6 × 17.3 cm (10 1/16 × 6 13/16 in.)
The J. Paul Getty Museum, Los Angeles
Ms. Ludwig IX 8, fol. 136v (83.ML.104.136v)



7. Master of James IV of Scotland
Flemish, before 1465 - about 1541
[Martyrs and Saints Worshipping the Lamb of God](#), about 1510 - 1520
from Spinola Hours
Tempera colors, gold, and ink on parchment
Leaf: 23.2 × 16.7 cm (9 1/8 × 6 9/16 in.)
The J. Paul Getty Museum, Los Angeles
Ms. Ludwig IX 18, fol. 39v (83.ML.114.39v)



9. Simon Bening
Flemish, about 1483 - 1561
[The Seven Sorrows of the Virgin](#), about 1525 - 1530
from Prayer Book of Cardinal Albrecht of Brandenburg
Tempera colors, gold paint, and gold leaf on parchment
Leaf: 16.8 × 11.4 cm (6 5/8 × 4 1/2 in.)
The J. Paul Getty Museum, Los Angeles
Ms. Ludwig IX 19, fol. 251v (83.ML.115.251v)

6. Willem Vrelant
Flemish, died 1481, active 1454 - 1481
[Adam and Eve Eating the Forbidden Fruit](#), 1450s
from Arenberg Hours
Tempera colors, gold leaf, and ink on parchment
Leaf: 25.6 × 17.3 cm (10 1/16 × 6 13/16 in.)
The J. Paul Getty Museum, Los Angeles
Ms. Ludwig IX 8, fol. 137 (83.ML.104.137)



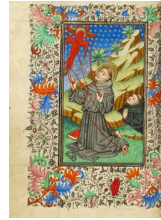
8. Master of James IV of Scotland
Flemish, before 1465 - about 1541
[Female Martyrs and Saints Worshipping the Lamb of God](#), about 1510 - 1520
from Spinola Hours
Tempera colors, gold, and ink on parchment
Leaf: 23.2 × 16.7 cm (9 1/8 × 6 9/16 in.)
The J. Paul Getty Museum, Los Angeles
Ms. Ludwig IX 18, fol. 40 (83.ML.114.40)



10. Unknown
[Decorated Text Page](#), about 1525 - 1530
from Prayer Book of Cardinal Albrecht of Brandenburg
Tempera colors, gold paint, and gold leaf on parchment
Leaf: 16.8 × 11.4 cm (6 5/8 × 4 1/2 in.)
The J. Paul Getty Museum, Los Angeles
Ms. Ludwig IX 19, fol. 252 (83.ML.115.252)



11. Unknown
[The Trinity](#), late 1400s
from Miscellany: Anatomical-Physiological Description of Men; Liber Synonimorum; Descriptions of Planets, Zodiacs, and Comets; Treatises on Divination from Names, etc.
Watercolor and ink on paper bound between original wood boards covered with original pigskin
Leaf: 30.6 × 22.1 cm (12 1/16 × 8 11/16 in.)
The J. Paul Getty Museum, Los Angeles
Ms. Ludwig XII 8, fol. 52 (83.MO.137.52)



12. Master of Sir John Fastolf
French, active before about 1420 - about 1450
[Saint Francis Receiving the Stigmata](#), about 1430 - 1440
from Book of Hours
Tempera colors, gold leaf, and ink on parchment
Leaf: 12.1 × 9.2 cm (4 3/4 × 3 5/8 in.)
The J. Paul Getty Museum, Los Angeles
Ms. 5, fol. 44v (84.ML.723.44v)

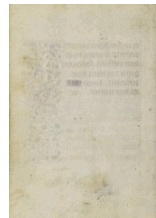


13. Unknown
[Decorated Text Page](#), about 1430 - 1440
from Book of Hours
Tempera colors, gold leaf, and ink on parchment
Leaf: 12.1 × 9.2 cm (4 3/4 × 3 5/8 in.)
The J. Paul Getty Museum, Los Angeles
Ms. 5, fol. 45 (84.ML.723.45)

14. Master of the Harvard Hannibal
French, active Paris, France, 1415 - about 1430
[Mass for the Dead](#), about 1420 - 1430
from Book of Hours
Tempera, gold paint, gold leaf, and silver paint on parchment
Leaf: 17.9 × 13 cm (7 1/16 × 5 1/8 in.)
The J. Paul Getty Museum, Los Angeles
Ms. 19, fol. 113 (86.ML.481.113)



15. Unknown
[Jacob's Dream](#), about 1400 - 1410
from World Chronicle
Tempera colors, gold, silver paint, and ink on parchment
Leaf: 33.5 × 23.5 cm (13 3/16 × 9 1/4 in.)
The J. Paul Getty Museum, Los Angeles
Ms. 33, fol. 40 (88.MP.70.40)



16. Unknown
[Blank Page](#), about 1471
from Prayer Book of Charles the Bold
Tempera colors, gold leaf, gold paint, silver paint, and ink on parchment
Leaf: 12.4 × 9.2 cm (4 7/8 × 3 5/8 in.)
The J. Paul Getty Museum, Los Angeles
Ms. 37, fol. 125v (89.ML.35.125v)



17. Unknown
[Mass of Saint Gregory](#), about 1480 - 1490
from Prayer Book of Charles the Bold
Tempera colors, gold leaf, gold paint, silver paint, and ink on parchment
Leaf: 12.4 × 9.2 cm (4 7/8 × 3 5/8 in.)
The J. Paul Getty Museum, Los Angeles
Ms. 37, fol. 126 (89.ML.35.126)



18. Spitz Master
French, active about 1415 - 1425
[The Agony in the Garden](#), about 1420
from Book of Hours
Tempera colors, gold, and ink on parchment
Leaf: 20.2 × 14.9 cm (7 15/16 × 5 7/8 in.)
The J. Paul Getty Museum, Los Angeles
Ms. 57, fol. 169v (94.ML.26.169v)



19. Unknown
[Decorated Text Page](#), about 1420
from Book of Hours
Tempera colors, gold, and ink on parchment
Leaf: 20.2 × 14.9 cm (7 15/16 × 5 7/8 in.)
The J. Paul Getty Museum, Los Angeles
Ms. 57, fol. 170 (94.ML.26.170)



20. Unknown
[The Assumption of the Virgin](#), probably 1170s
from Stammheim Missal
Tempera colors, gold leaf, silver leaf, and ink on parchment
Leaf: 28.2 × 18.9 cm (11 1/8 × 7 7/16 in.)
The J. Paul Getty Museum, Los Angeles
Ms. 64, fol. 145v (97.MG.21.145v)



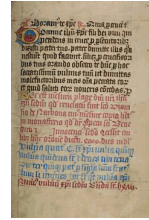
21. Unknown
[Initial F: Tree of Jesse](#), about 1170s
from Stammheim Missal
Tempera colors, gold leaf, silver leaf, and ink on parchment
Leaf: 28.2 × 18.9 cm (11 1/8 × 7 7/16 in.)
The J. Paul Getty Museum, Los Angeles
Ms. 64, fol. 146 (97.MG.21.146)



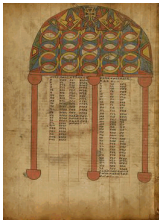
22. Taddeo Crivelli
Italian, died about 1479, active about 1451 - 1479
[Initial B: The Trinity](#), about 1460 - 1470
Cutting from a gradual
Tempera and gold on parchment
Leaf: 16 × 16 cm (6 5/16 × 6 5/16 in.)
The J. Paul Getty Museum, Los Angeles
Ms. 88, recto (2005.2.recto)



23. Unknown
Christ's Side Wound, about 1190 - 1200 (with fifteenth-century text)
 from Life of Christ with added devotional texts and illuminations
 from Illustrated Vita Christi, with devotional supplements
 Tempera colors and gold leaf on parchment
 Leaf: 11.9 x 17 cm (4 11/16 x 6 11/16 in.)
 The J. Paul Getty Museum, Los Angeles
 Ms. 101, fol. 105v (2008.3.105v)



24. Unknown
Text Page, illumination about 1190; written about 1490
 from Life of Christ with added devotional texts and illuminations
 from Illustrated Vita Christi, with devotional supplements
 Ink on parchment
 Leaf: 11.9 x 17 cm (4 11/16 x 6 11/16 in.)
 The J. Paul Getty Museum, Los Angeles
 Ms. 101, fol. 106 (2008.3.106)



25. Unknown
Canon Table Page, about 1480 - 1520
 from Gospel Book
 Tempera on parchment
 Leaf: 34.5 x 25.6 cm (13 9/16 x 10 1/16 in.)
 The J. Paul Getty Museum, Los Angeles
 Ms. 105, fol. 5v (2010.17.5v)



26. Unknown
The Prophets with Abraham Embracing Isaac and Jacob, about 1504 - 1505
 from Gospel Book
 Tempera on parchment
 Leaf: 34.5 x 25.6 cm (13 9/16 x 10 1/16 in.)
 The J. Paul Getty Museum, Los Angeles
 Ms. 105, fol. 6 (2010.17.6)



27. Attributed to the Master of the Antiphony of San Giovanni Fuorcivitas
 Italian, active 2nd quarter of 14th century
 Initial A: Christ Wiping Away the Tears of the Saints, about 1330 - 1340
 from Initial A: Christ Wiping Away the Tears of the Saints
 Tempera colors and gold on parchment
 Leaf: 13.5 x 13.5 cm (5 5/16 x 5 5/16 in.)
 The J. Paul Getty Museum, Los Angeles
 Ms. 113, recto (2015.57.recto)



28. Unknown
Blank Ruled Page, about 1530 - 1540
 Ink on parchment
 Leaf: 36.4 x 26.2 cm (14 5/16 x 10 5/16 in.)
 The J. Paul Getty Museum, Los Angeles, Acquired in honor of Thomas Kren
 Ms. 114, fol. 9v (2016.7.9v)



29. Simon Bening
Flemish, about 1483 - 1561
The Author in His Study, about 1530 - 1540
Tempera colors, gold leaf, gold paint, and ink on parchment
Leaf: 36.4 × 26.2 cm (14 5/16 × 10 5/16 in.)
The J. Paul Getty Museum, Los Angeles, Acquired in honor of Thomas Kren
Ms. 114, fol. 10 (2016.7.10)

30. Unknown maker
Henricus de Carreto
[The Wheels of Ezekiel: The Preeminence of the Lion](#), about 1320 - 1321
Tempera colors and gold on parchment
Leaf: 36.7 × 25.4 cm (14 7/16 × 10 in.)
Robert McCarthy
L.2014.76

31. Unknown maker
Henricus de Carreto
[Ezekiel Kneeling before His Vision \(2\)](#), about 1320 - 1321
Tempera colors and gold on parchment
Leaf: 36.7 × 25.4 cm (14 7/16 × 10 in.)
Robert McCarthy
L.2014.77

