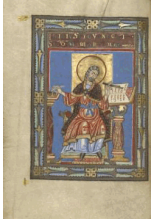


Touching the Past: The Hand in the Medieval Book

July 7 to September 27, 2015

The J. Paul Getty Museum at the Getty Center



1. Unknown

[Saint Mark](#), about 1120-40

from Gospel Book

Tempera colors, gold, and silver on parchment

Leaf: 22.9 x 16.5 cm (9 x 6 1/2 in.)

The J. Paul Getty Museum, Los Angeles

Ms. Ludwig II 3, fol. 51v (83.MB.67.51v)



2. Unknown

[Decorated Incipit Page](#), about 1120 - 1140

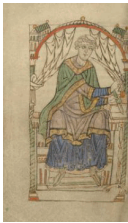
from Gospel Book

Tempera colors, gold, and silver on parchment

Leaf: 22.9 x 16.5 cm (9 x 6 1/2 in.)

The J. Paul Getty Museum, Los Angeles

Ms. Ludwig II 3, fol. 52 (83.MB.67.52)



3. Unknown

[Eadmer of Canterbury Writing](#), about 1140-50

from Life and Conversations of Anselm of Canterbury

Tempera colors, gold paint, and ink on parchment

Leaf: 17.8 x 10.8 cm (7 x 4 1/4 in.)

The J. Paul Getty Museum, Los Angeles

Ms. Ludwig XI 6, fol. 44v (83.MN.125.44v)



4. Unknown

[Decorated Initial D](#), about 1140 - 1150

from Life and Conversations of Anselm of Canterbury

Tempera colors, gold paint, and ink on parchment

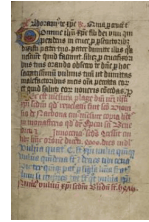
Leaf: 17.8 x 10.8 cm (7 x 4 1/4 in.)

The J. Paul Getty Museum, Los Angeles

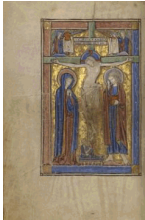
Ms. Ludwig XI 6, fol. 45 (83.MN.125.45)



5. Unknown
The Side Wound of Christ, about 1490
 from Life of Christ with added devotional texts and illuminations
 from Illustrated Vita Christi, with devotional supplements
 Tempera colors and gold leaf on parchment
 Leaf: 11.9 x 17 cm (4 11/16 x 6 11/16 in.)
 The J. Paul Getty Museum, Los Angeles
 Ms. 101, fol. 105v (2008.3.105v)



6.
Text Page, illumination about 1190; written about 1490
 from Life of Christ with added devotional texts and illuminations
 from Illustrated Vita Christi, with devotional supplements
 Ink on parchment
 Leaf: 11.9 x 17 cm (4 11/16 x 6 11/16 in.)
 The J. Paul Getty Museum, Los Angeles
 Ms. 101, fol. 106 (2008.3.106)



7. Unknown
The Crucifixion, between 1234 and 1262
 from Missal
 Tempera colors and gold leaf on parchment
 Leaf: 24.8 x 16.7 cm (9 3/4 x 6 9/16 in.)
 The J. Paul Getty Museum, Los Angeles
 Ms. Ludwig V 5, fol. 104v (83.MG.80.104v)



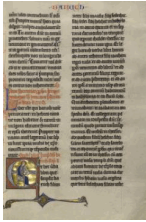
8. Unknown
Christ in Majesty, begun after 1234 - completed before 1262
 from Missal
 Tempera colors and gold leaf on parchment
 Leaf: 24.8 x 16.7 cm (9 3/4 x 6 9/16 in.)
 The J. Paul Getty Museum, Los Angeles
 Ms. Ludwig V 5, fol. 105 (83.MG.80.105)



9. Unknown
The Creation of the World, about 1250-60
 from Wenceslaus Psalter
 Tempera colors, gold leaf, and ink on parchment
 Leaf: 19.2 x 13.3 cm (7 9/16 x 5 1/4 in.)
 The J. Paul Getty Museum, Los Angeles
 Ms. Ludwig VIII 4, fol. 7v (83.MK.95.7v)



10. Unknown
Scenes from the Lives of Adam and Eve and Cain and Abel, about 1250 - 1260
 from Wenceslaus Psalter
 Tempera colors, gold leaf, and ink on parchment
 Leaf: 19.2 x 13.3 cm (7 9/16 x 5 1/4 in.)
 The J. Paul Getty Museum, Los Angeles
 Ms. Ludwig VIII 4, fol. 8 (83.MK.95.8)



11. Unknown
Initial E: Baruch, about 1270
 from Marquette Bible, vol. 2
 Tempera colors, black ink, and gold leaf on parchment
 Leaf: 47 x 32.2 cm (Leaf: 18 1/2 x 12 11/16 in.)
 The J. Paul Getty Museum, Los Angeles
 Ms. Ludwig I 8, v2, fol. 126 (83.MA.57.2.126)



12. Unknown
 Possibly Michael Lupi de Çandiu
 Spanish, active Pamplona, Spain 1297 - 1305
Initial L: Two Men before a King, about 1290 - 1310
 from Feudal Customs of Aragon
 Tempera colors, gold leaf, and ink on parchment
 Leaf: 36.5 x 24 cm (14 3/8 x 9 7/16 in.)
 The J. Paul Getty Museum, Los Angeles
 Ms. Ludwig XIV 6, fol. 229v (83.MQ.165.229v)



13. Unknown
 Possibly Michael Lupi de Çandiu
 Spanish, active Pamplona, Spain 1297 - 1305
A Man Pledging Homage, about 1290-1310
 from Feudal Customs of Aragon
 Tempera colors, gold leaf, and ink on parchment
 Leaf: 36.5 x 24 cm (14 3/8 x 9 7/16 in.)
 The J. Paul Getty Museum, Los Angeles
 Ms. Ludwig XIV 6, fol. 230 (83.MQ.165.230)



14. Court workshop of Duke Ludwig I of Liegnitz and Brieg
 Polish, 1364 - 1398
The Family of Berthold VI of Andechs; The Marriage of Saint Hedwig and Heinrich, 1353
 from The Life of the Blessed Hedwig
 Tempera colors, colored washes, and ink on parchment
 Leaf: 34.1 x 24.8 cm (13 7/16 x 9 3/4 in.)
 The J. Paul Getty Museum, Los Angeles
 Ms. Ludwig XI 7, fol. 10v (83.MN.126.10v)



15. Court workshop of Duke Ludwig I of Liegnitz and Brieg
 Polish, 1364 - 1398
Heinrich Sleeping and Saint Hedwig Praying; Heinrich and Saint Hedwig with Their Children, 1353
 from The Life of the Blessed Hedwig
 Tempera colors, colored washes, and ink on parchment
 Leaf: 34.1 x 24.8 cm (13 7/16 x 9 3/4 in.)
 The J. Paul Getty Museum, Los Angeles
 Ms. Ludwig XI 7, fol. 11 (83.MN.126.11)



16. Unknown
The Scribe Petros and His Pupils, 1386
 from Gospel Book
 Black ink and watercolors on paper bound between wood boards covered with dark brown kidskin
 Leaf: 24 x 16.5 cm (9 7/16 x 6 1/2 in.)
 The J. Paul Getty Museum, Los Angeles
 Ms. Ludwig II 6, fol. 13v (83.MB.70.13v)



17. Unknown
Initial E: Baruch, about 1270
from Gospel Book
Black ink and watercolors on paper bound between wood boards covered with dark brown kidskin
Leaf: 24 x 16.5 cm (9 7/16 x 6 1/2 in.)
The J. Paul Getty Museum, Los Angeles
Ms. Ludwig II 6, fol. 14 (83.MB.70.14)



18. Unknown
Astronomical Table, late 14th century, shortly after 1386
from Astronomical and Medical Miscellany: Toledan Constellation Tables; De Dispositione Aeris; De Prognosticationibus Egritudinem; etc.
Pen and black ink and tempera on parchment bound between pasteboard covered with black morocco
Leaf: 21.3 x 15.2 cm (8 3/8 x 6 in.)
The J. Paul Getty Museum, Los Angeles
Ms. Ludwig XII 7, fol. 50v (83.MO.136.50v)



19. Unknown
Astronomical Volvelle, late 14th c., shortly after 1386
from Astronomical and Medical Miscellany: Toledan Constellation Tables; De Dispositione Aeris; De Prognosticationibus Egritudinem; etc.
Pen and black ink and tempera on parchment bound between pasteboard covered with black morocco
Leaf: 21.3 x 15.2 cm (8 3/8 x 6 in.)
The J. Paul Getty Museum, Los Angeles
Ms. Ludwig XII 7, fol. 51 (83.MO.136.51)

20. Unknown
Saint Thomas Becket Murdered at the High Altar, early fifteenth century
Tempera and gold leaf on vellum
Closed: 22.9 x 15.6 cm (9 x 6 1/8 in.)
Los Angeles County Museum of Art, William Randolph Hearst Collection
L.2015.2

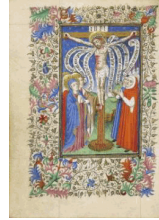


21. Unknown maker, Irish
Thomas of Ireland
Irish, flourished 1295 - before 1338
Marginal Manicules, 15th century
Ink on paper
L.2015.20

22. Attributed to the Rohan Master or immediate circle
French, active about 1410 - 1440
The Rejection of Joachim and Anna's Offering, about 1410-30
Leaf from a Book of Hours
Tempera colors, gold, and ink on parchment
Leaf: 26 x 18.5 cm (10 1/4 x 7 5/16 in.)
The J. Paul Getty Museum, Los Angeles
Ms. 112, recto (2014.56.recto)



23. Boucicaut Master and Workshop
French, active about 1390 - 1430
[The Visitation](#), about 1415-20
from Book of Hours
Tempera colors, gold paint, gold leaf, and ink on parchment
Leaf: 20.5 x 14.8 cm (8 1/16 x 5 13/16 in.)
The J. Paul Getty Museum, Los Angeles
Ms. 22, fol. 48 (86.ML.571.48)



24. Master of Sir John Fastolf
French, active before about 1420 - about 1450
[The Seven Last Words of Christ](#), about 1430-40
from Book of Hours
Tempera colors, gold leaf, and ink on parchment
Leaf: 12.1 x 9.2 cm (4 3/4 x 3 5/8 in.)
The J. Paul Getty Museum, Los Angeles
Ms. 5, fol. 16v (84.ML.723.16v)

25. Unknown
[Decorated Text Page](#), about 1430 - 1440
from Book of Hours
Tempera colors, gold leaf, and ink on parchment
Leaf: 12.1 x 9.2 cm (4 3/4 x 3 5/8 in.)
The J. Paul Getty Museum, Los Angeles
Ms. 5, fol. 17 (84.ML.723.17)

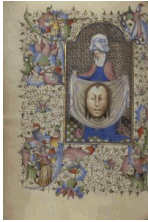
26. Unknown
[Binding](#), about 1450
Wood boards covered with original brown calf
Closed: 38.1 x 26 x 12.9 cm (15 x 10 1/4 x 5 1/16 in.)
The J. Paul Getty Museum, Los Angeles
Ms. Ludwig I 13, cover (83.MA.62.cover)



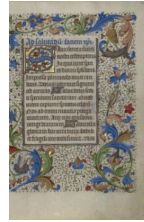
27. Unknown
[Illustrated Fables](#), about 1450 -75
from Fables
Pen and black ink and colored washes on paper
Leaf: 28.7 x 20.6 cm (11 5/16 x 8 1/8 in.)
The J. Paul Getty Museum, Los Angeles
Ms. Ludwig XV 1, fol. 27v (83.MR.171.27v)



28. Unknown
[Illustrated Fables](#), about 1450-75
from Fables
Pen and black ink and colored washes on paper
Leaf: 28.7 x 20.6 cm (11 5/16 x 8 1/8 in.)
The J. Paul Getty Museum, Los Angeles
Ms. Ludwig XV 1, fol. 28 (83.MR.171.28)



29. Master of Guillebert de Mets
 Flemish, active about 1410 - 1450
Saint Veronica Displaying the Sudarium, about 1450-55
 from Book of Hours
 Tempera colors, gold leaf, and ink on parchment
 Leaf: 19.4 x 14 cm (7 5/8 x 5 1/2 in.)
 The J. Paul Getty Museum, Los Angeles
 Ms. 2, fol. 13v (84.ML.67.13v)



30. Unknown
Decorated Initial S, about 1450 - 1455
 from Book of Hours
 Tempera colors, gold leaf, and ink on parchment
 Leaf: 19.4 x 14 cm (7 5/8 x 5 1/2 in.)
 The J. Paul Getty Museum, Los Angeles
 Ms. 2, fol. 14 (84.ML.67.14)



32. Unknown
The Crucifixion, about 1500-1505
 from Missal
 Tempera colors, gold paint, and ink on parchment
 Leaf: 38.7 x 27.9 cm (15 1/4 x 11 in.)
 The J. Paul Getty Museum, Los Angeles
 Ms. 18, fol. 157v (86.MG.480.157v)

31. Unknown maker, Italian
 Inscribed Brass Case Calendar Page, about 1450-58
 Ink on paper
 Closed: 12.6 x 3.8 x 2 cm (4 15/16 x 1 1/2 x 13/16 in.)
 Courtesy of the Huntington Library, San Marino, CA
 L.2015.19



33. Unknown
Decorated Initial T, about 1500 - 1505
 from Missal
 Tempera colors, gold paint, and ink on parchment
 Leaf: 38.7 x 27.9 cm (15 1/4 x 11 in.)
 The J. Paul Getty Museum, Los Angeles
 Ms. 18, fol. 158 (86.MG.480.158)



34. Master of the Dresden Prayer Book
 Flemish, active about 1480 - 1515
 Unknown
The Nativity, about 1510 - 1520
 from Spinola Hours
 Tempera colors, gold, and ink on parchment
 Leaf: 23.2 x 16.7 cm (9 1/8 x 6 9/16 in.)
 The J. Paul Getty Museum, Los Angeles
 Ms. Ludwig IX 18, fol. 119v (83.ML.114.119v)



35. Master of the Dresden Prayer Book
Flemish, active about 1480 - 1515
Unknown
[Christ before Caiaphas](#), about 1510-20
from Spinola Hours
Tempera colors, gold, and ink on parchment
Leaf: 23.2 x 16.7 cm (9 1/8 x 6 9/16 in.)
The J. Paul Getty Museum, Los Angeles
Ms. Ludwig IX 18, fol. 120 (83.ML.114.120)



The J. Paul Getty Museum

June 24, 2015

Additional information about some of these works of art can be found by searching [getty.edu](http://www.getty.edu/art/collection/) at <http://www.getty.edu/art/collection/>

© 2015 J. Paul Getty Trust