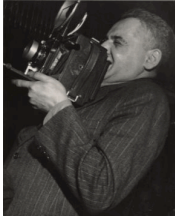


In Focus: The Camera

July 30, 2019 to January 5, 2020

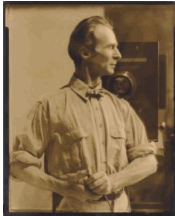
The J. Paul Getty Museum at the Getty Center



1. Lisette Model
American, born Austria, 1901 - 1983
[Weegee, New York](#), 1945
Gelatin silver print
Image: 34.1 × 27 cm (13 7/16 × 10 5/8 in.)
The J. Paul Getty Museum, Los Angeles
© *Estate of Lisette Model, courtesy Baudoin Lebon/Keitelman*
84.XM.153.75



2. Capt. Horatio Ross
British, 1801 - 1886
[Self-Portrait Preparing a Collodion Plate](#), 1856-59
Albumen silver print
Image: 20 × 16.2 cm (7 7/8 × 6 3/8 in.)
The J. Paul Getty Museum, Los Angeles
84.XP.673.1



3. Edward Steichen
American, born Luxembourg, 1879 - 1973
[Self-Portrait with a Camera](#), About 1905
Gelatin silver print
Image: 24.1 × 19.2 cm (9 1/2 × 7 9/16 in.)
The J. Paul Getty Museum, Los Angeles
© *The Estate of Edward Steichen/Artists Rights Society (ARS), New York*
84.XM.848.2



4. Underwood & Underwood
American, founded 1881, dissolved 1940s
[Photographing New York City—On a Slender Support Eighteen Stories above Pavement of Fifth Avenue](#), 1905
Gelatin silver prints
Mount: 8.9 × 17.8 cm (3 1/2 × 7 in.)
The J. Paul Getty Museum, Los Angeles
84.XC.873.7600



5. George Hoyningen-Huene
American, born Russia, 1900 - 1968
[Portrait of Henri Cartier-Bresson](#), 1935
Gelatin silver print
Image: 19.4 × 24.4 cm (7 5/8 × 9 5/8 in.)
The J. Paul Getty Museum, Los Angeles
© R.J. Horst, Courtesy Staley-Wise Gallery, NYC
84.XP.904.2



6. Walker Evans
American, 1903 - 1975
[Resort Photographer at Work](#), Negative, 1941; printed later
Gelatin silver print
Image: 15.9 × 22.4 cm (6 1/4 × 8 13/16 in.)
The J. Paul Getty Museum, Los Angeles
Status undetermined
84.XM.956.948



7. Man Ray (Emmanuel Radnitsky)
American, 1890 - 1976
[Self-Portrait with a Camera](#), 1932
Gelatin silver print
Image: 29.2 × 22.9 cm (11 1/2 × 9 in.)
The J. Paul Getty Museum, Los Angeles
© Man Ray Trust ARS-ADAGP
84.XM.1000.14



8. Alma Lavenson
American, 1897 - 1989
[Self-Portrait](#), 1932
Gelatin silver print
Image: 20.3 × 25.2 cm (8 × 9 15/16 in.)
The J. Paul Getty Museum, Los Angeles
© Alma Lavenson Associates
85.XP.283.5



9. Edward Weston
American, 1886 - 1958
[Self-Portrait with a Camera](#), 1908
Platinum print
Image: 14.6 × 8.6 cm (5 3/4 × 3 3/8 in.)
The J. Paul Getty Museum, Los Angeles
© 1981 Arizona Board of Regents, Center for Creative Photography
86.XM.719.3



10. August Semmendinger
American, born Germany, 1820 - 1885
[Mammoth Plate Wet-Collodion Camera](#), 1874-85
Wood, metal, fabric, and glass
Object (overall): H: 175.3 × W: 63.5 × D: 137.2 cm (69 × 25 × 54 in.)
The J. Paul Getty Museum, Los Angeles, Gift in memory of Beaumont Newhall
94.XU.112.1



11. Andy Warhol
American, 1928 - 1987
Polaroid Portrait of Jean-Michel Basquiat, 1982
Dye diffusion print
Image: 9.5 × 7.3 cm (3 3/4 × 2 7/8 in.)
The J. Paul Getty Museum, Los Angeles
© *The Andy Warhol Foundation for the Visual Arts, Inc.*
98.XM.168.6



12. Weegee (Arthur Fellig)
American, born Austria, 1899 - 1968
Photographer at a Fire, 1940-45
Gelatin silver print
Image: 34.1 × 27.1 cm (13 7/16 × 10 11/16 in.)
The J. Paul Getty Museum, Los Angeles
© *International Center of Photography*
2000.44



13. Unknown
Portrait of Dorothea Lange, 1937
Gelatin silver print
Image: 13.7 × 16.7 cm (5 3/8 × 6 9/16 in.)
The J. Paul Getty Museum, Los Angeles, Gift of the
Dixon Family
Status undetermined
2000.55.2



14. George Watson
American, 1892 - 1977
Camera on a Twelve-Foot Tripod, 1920s
Gelatin silver print
Image: 11.7 × 9.1 cm (4 5/8 × 3 9/16 in.)
The J. Paul Getty Museum, Los Angeles
© *The Watson Family Photo Collection*
2001.71.6



15. Anthony Friedkin
American, born 1949
Extras with Film Cameras, 1996
Gelatin silver print
Image: 16.3 × 24.3 cm (6 7/16 × 9 9/16 in.)
The J. Paul Getty Museum, Los Angeles, Gift of Sue and
Albert Dorskind
© *Anthony Friedkin*
2002.44.8



16. Garry Winogrand
American, 1928 - 1984
Diane Arbus, Love-In, Central Park, New York, 1969
Gelatin silver print
Image: 31.3 × 47.1 cm (12 5/16 × 18 9/16 in.)
The J. Paul Getty Museum, Los Angeles
© 1984 *The Estate of Garry Winogrand*
2004.50.3



17. Imogen Cunningham
American, 1883 - 1976
Self-Portrait with Grandchildren in a Funhouse, 1955
Gelatin silver print
Image: 22.2 × 18.5 cm (8 3/4 × 7 5/16 in.)
The J. Paul Getty Museum, Los Angeles
© Imogen Cunningham Trust
2006.25.2



18. Heinz Hajek-Halke
German, 1898 - 1983
Self-Portrait, About 1948
Gelatin silver print
Image: 23.5 × 17.4 cm (9 1/4 × 6 7/8 in.)
The J. Paul Getty Museum, Los Angeles
© Heinz Hajek-Halke/Collection Michael Ruetz/Agentur
Focus
2007.25.12



19. Unknown
Camera Obscura, About 1750-1800
Wood, brass, and glass
Object: H: 7.9 × W: 10.8 × D: 23.5 cm (3 1/8 × 4 1/4 × 9 1/4 in.)
The J. Paul Getty Museum, Los Angeles, Gift of Gloria and Stanley Fishfader
2007.46.1



21. Eastman Kodak Company
American, founded 1888
Kodak, 1888
Wood, leather, brass, and glass
Object: H: 9.5 × W: 8.3 × D: 17.1 cm (3 3/4 × 3 1/4 × 6 3/4 in.)
The J. Paul Getty Museum, Los Angeles, Gift of Gloria and Stanley Fishfader
2007.46.3



20. Unknown
Daguerreotype/Wet-Plate Camera, About 1851
Wood, brass, and glass
Object: H: 18.1 × W: 21.6 × D: 31.1 cm (7 1/8 × 8 1/2 × 12 1/4 in.)
The J. Paul Getty Museum, Los Angeles, Gift of Gloria and Stanley Fishfader
2007.46.2



22. Unknown
8 × 10 Inch Reflex Camera, About 1900-1915
Wood, leather, brass, and glass
Object: H: 29.2 × W: 32.4 × D: 40.6 cm (11 1/2 × 12 3/4 × 16 in.)
The J. Paul Getty Museum, Los Angeles, Gift of Gloria and Stanley Fishfader
2007.46.4



23. Polaroid Corporation
American, founded 1937
Self-Portrait with Grandchildren in a Funhouse, 1955
Leather and steel
Object (Closed): L: 24.1 × W: 11.4 × D: 5.7 cm (9 1/2 × 4 1/2 × 2 1/4 in.)
The J. Paul Getty Museum, Los Angeles, Gift of Gloria and Stanley Fishfader
2007.46.5

24. Irving Penn
American, 1917 - 2009
Street Photographer, New York, 1951
Gelatin silver print
Image: 30.8 × 26 cm (12 1/8 × 10 1/4 in.)
The J. Paul Getty Museum, Los Angeles, Partial gift of Irving Penn
2008.1.112



25. Unknown
Dallmeyer Stereo Wet-Plate Camera, 1860
Wood, brass, and glass
Object: 17.5 × 25.5 × 24.5 cm (6 7/8 × 10 1/16 × 9 5/8 in.)
The J. Paul Getty Museum, Los Angeles, Gift of Gloria and Stanley Fishfader
2008.89.2



26. Ernst Leitz, GmbH
German, founded 1869
Leica Model A, About 1925-30
Metal, enamel, and glass
Object: 7 × 14 × 4.1 cm (2 3/4 × 5 1/2 × 1 5/8 in.)
The J. Paul Getty Museum, Los Angeles, Gift of Gloria and Stanley Fishfader
2008.89.8



27. Rollei-Werke Franke & Heidecke
German, founded 1920
Rolleicord 6 × 6, TLR, 1933
Metal and glass
The J. Paul Getty Museum, Los Angeles, Gift of Gloria and Stanley Fishfader
2008.89.9



28. Devin Colorgraph Co.
American, active 1930s - 1940s
Devin Color Compure One-Shot Camera, 1939
Metal, plastic, and glass
Object: H: 16 × W: 20 × D: 19 cm (6 5/16 × 7 7/8 × 7 1/2 in.)
The J. Paul Getty Museum, Los Angeles, Gift of Gloria and Stanley Fishfader
2008.89.12



29. Victor Hasselblad AB
Swedish, founded 1941
[Hasselblad Wide-Angle Camera](#), 1954-59
Metal, artificial leather, glass
Object: 13 × 11 × 15 cm (5 1/8 × 4 5/16 × 5 7/8 in.)
The J. Paul Getty Museum, Los Angeles, Gift of Gloria
and Stanley Fishfader
2008.89.14



30. Nippon Kogaku K.K.
Japanese, founded 1917
[Nikon "Reporter" Large-Load 35 mm Camera](#), After 1959
Plastic, metal, artificial leather, and glass
The J. Paul Getty Museum, Los Angeles, Gift of Gloria
and Stanley Fishfader
2008.89.20



31. Japy & Cie
French, active late 1800s
[Le Pascal](#), 1898
Metal, leather, and glass
Object: 11.5 × 7 × 8.7 cm (4 1/2 × 2 3/4 × 3 7/16 in.)
The J. Paul Getty Museum, Los Angeles, Gift of Gloria
and Stanley Fishfader
2008.89.50



32. Eastman Kodak Company
American, founded 1888
[World War II "Matchbox" Spy Camera](#), 1944
Metal and glass
The J. Paul Getty Museum, Los Angeles, Gift of Gloria
and Stanley Fishfader
2008.89.73.1



33. Canon Inc.
Japanese, founded 1933
[Canon S](#), 1946
Metal, glass
Object: 8 × 14.5 × 10 cm (3 1/8 × 5 11/16 × 3 15/16 in.)
The J. Paul Getty Museum, Los Angeles, Gift of Gloria
and Stanley Fishfader
2008.89.78



34. Eastman Kodak Company
American, founded 1888
[Kodak Bantam Special](#), 1936
Metal, enamel, and glass
The J. Paul Getty Museum, Los Angeles, Gift of Gloria
and Stanley Fishfader
2008.89.82



35. Steineck Kamerawerk
Steineck ABC Wristwatch Camera, with a Film Disk and Canister, 1949
Metal, enamel, leather, and glass
The J. Paul Getty Museum, Los Angeles, Gift of Gloria and Stanley Fishfader
2008.89.109.1

36. Steineck Kamerawerk
Steineck ABC Wristwatch Camera, with a Film Disk and Canister, 1949
The J. Paul Getty Museum, Los Angeles, Gift of Gloria and Stanley Fishfader
2008.89.109.2



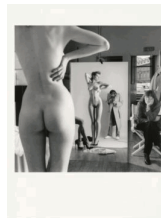
37. Lewis Morley
Australian, born Hong Kong, 1925 - 2013
Self-Portrait with Christine Keeler, 1963
Gelatin silver print
Mat: 23.5 × 17.9 cm (9 1/4 × 7 1/16 in.) [irregular]
The J. Paul Getty Museum, Los Angeles, Gift of David Knaus
© *Lewis Morley*
2009.123.1



38. John F. Collins
American, 1888 - 1990, active 1904 - 1974
Kodak Ektra Camera, About 1930
Gelatin silver print
Image: 38.4 × 48.1 cm (15 1/8 × 18 15/16 in.)
The J. Paul Getty Museum, Los Angeles, Gift of Nina and Leo Pircher
Status undetermined
2012.62.4



39. Andreas Feininger
American, born France, 1906 - 1999
The Photojournalist, Negative, 1951; printed later
Gelatin silver print
Image: 32.3 × 26.3 cm (12 11/16 × 10 3/8 in.)
The J. Paul Getty Museum, Los Angeles, Gift of Daniel Greenberg and Susan Steinhauer
© *Estate of Gertrud E. Feininger*
2016.178



40. Helmut Newton
Australian, born Germany, 1920 - 2004
Self-Portrait with Wife and Models, Negative, 1981; print, about 1984
Gelatin silver print
Image: 26.9 × 26.9 cm (10 9/16 × 10 9/16 in.)
The J. Paul Getty Museum, Los Angeles, Gift of the Helmut Newton Foundation
© *The Helmut Newton Estate*
2018.34.17



41. Alexis Delcroix
Belgian, 1900 - after 1951
Folding Camera and Film, About 1930
Gelatin silver print
Image: 19.1 × 24.8 cm (7 1/2 × 9 3/4 in.)
The J. Paul Getty Museum, Los Angeles, Gift of Rose Shoshana and Manfred Müller
Status undetermined
2018.64



42. Paul Mpagi Sepuya
American, born 1982
Mirror Study, 2016
Pigment print
Image: 33 × 25.4 cm (13 × 10 in.)
The J. Paul Getty Museum, Los Angeles,
Purchased with funds provided by the Photographs Council
© *Paul Mpagi Sepuya*
2019.95.1

43. Polaroid Corporation
American, founded 1937
Polaroid SX-70, 1972
Metal, plastic, leather, and glass
Object: H: 14 × W: 10.2 × D: 17.8 cm (5 1/2 × 4 × 7 in.)
Private Collection
EE.2019.1

44. Apple Inc.
American, founded 1976
Apple QuickTake 100, 1994
Plastic and glass
Object: H: 5.1 × W: 12.7 × D: 15.2 cm (2 × 5 × 6 in.)
Private Collection
EE.2019.2

45. Eastman Kodak Company
American, founded 1888
Kodak Instamatic 100 with Flash Bulbs and an Instruction Booklet, 1963
Plastic, metal, and glass
Object: H: 5.7 × W: 10.2 × D: 4.4 cm (2 1/4 × 4 × 1 3/4 in.)
Private Collection
EE.2019.3

46. Polaroid Corporation
American, founded 1937
Polaroid SX-70 Advertisement, 1977
Photomechanical reproduction
Sheet: 30.5 × 22.9 cm (12 × 9 in.)
Private Collection
EE.2019.4

47. Harry Baskerville
American, 1912 - 2000
Tom Kelley with His Camera, 1958
Pigment print (Carbro)
Image: 35.6 × 27.9 cm (14 × 11 in.)
Private Collection
L.2019.1



The J. Paul Getty Museum

July 9, 2019

Additional information about some of these works of art can be found by searching [getty.edu](http://www.getty.edu/art/collection/) at <http://www.getty.edu/art/collection/>

© 2019 J. Paul Getty Trust