



# Getty Vocabulary Program: What We Do

WITH A BRIEF HISTORY

Patricia Harpring  
Managing Editor

revised June 2023

Getty

# Table of Contents

- Background and Content
  - Where to Find Vocabularies
  - History of Vocabularies
  - Purpose of Vocabularies
  - Based in Standards
  - Meet the Vocabulary Program
- What Are Getty Vocabularies
  - AAT
  - TGN
  - ULAN
  - IA
  - CONA
- Activities of Vocabulary Program
  - Mission
  - Who Are Contributors
  - Workflow
  - Primary Tasks

# Getty Vocabularies: Background and Context

Catalog, index, document, retrieve, research, discover

# Find Getty Vocabs Online

For information about  
Getty Vocabularies,

**Google**

**“getty vocabularies”**

Or on the Getty site, do  
not search: instead, scroll  
down to “search art terms”

Search the data, access  
data releases, how to  
contribute,  
editorial guidelines,  
training materials, news

**Contact us:**

**vocab@getty.edu**

Getty

http://www.getty.edu/research/tools/vocabularies/index.html

<https://www.getty.edu/>

Getty

[Visit](#)

[What's On](#)

[Explore Art](#)

[Research & Conservation](#)

[Funding](#)

[About](#)

## Search Getty.edu

Search Getty.edu



### More Search Tools

Other tools to help you find  
looking for

Museum Collection

[Search for art and artists](#)

Research Collections

[Search our archival collections](#)

Getty Vocabularies

[Search art terms](#)

Getty Library

# Find Getty Vocab Online

For information about Getty Vocabularies, **Google** “**getty vocabularies**”

Or on Getty site, do not search: instead, scroll down to “search art terms”

Search the data, access data releases, how to contribute, editorial guidelines, training materials, news

Contact us:  
**vocab@getty.edu**



http://www.getty.edu/research/tools/vocabularies/index.html

The screenshot shows the homepage of The Getty Research Institute. At the top, the navigation menu includes 'Exhibitions & Events', 'Special Collections', 'Library', 'Search Tools & Databases', 'Scholars & Projects', 'Publications', and 'About the GRI'. Below the navigation, there are 'Print' and 'Share' icons. The main content area is titled 'Search Tools & Databases' and features a sidebar with a list of search tools. The 'Getty Vocabularies' section is highlighted with a red box and a red arrow pointing to the 'Getty Vocabularies' link in the sidebar. Another red arrow points to the 'Click the heading' text in a box above the 'NEW' section. The 'NEW' section contains a paragraph about the availability of Getty vocabularies as Linked Open Data, with a 'Learn more' link. Below this, there are three featured vocabulary entries: 'The Art & Architecture Thesaurus (AAT)®', 'The Getty Thesaurus of Geographic Names (TGN)®', and 'The Cultural Objects Name Authority (CONA)®'. Each entry includes a small icon and a brief description. The right sidebar contains a 'Linked Open data' logo, a 'See What's New' section with a list of multilingual AAT terms, and a 'Have a Question?' section with contact and subscription options.

The Getty Research Institute

Exhibitions & Events | Special Collections | Library | Search Tools & Databases | Scholars & Projects | Publications | About the GRI

Print | Share

Search Tools & Databases


- Primo Search
- Getty Research Portal
- Collection Inventories & Finding Aids
- Photo Archive
- Research Guides & Bibliographies
- Digital Collections
- Article & Research Databases
- Collecting & Provenance Research
- BHA & RILA
- Getty Vocabularies**
  - Art & Architecture Thesaurus (AAT)®
  - Cultural Objects Name Authority (CONA)®
  - Getty Thesaurus of Geographic Names (TGN)®
  - Union List of Artist Names (ULAN)®
  - Contribute
    - Editorial Guidelines
    - Getty Vocabularies as Linked Open Data
    - Frequently Asked Questions
  - Obtain the Getty Vocabularies
  - Training Materials

## Getty Vocabularies

**NEW**


The Getty vocabularies are now available as Linked Open Data. [Learn more.](#)

*What is cinnabar? What is a rhyton?* The Getty vocabularies contain structured terminology for art, architecture, decorative arts, archival materials, visual surrogates, conservation, and bibliographic materials. Compliant with international standards, they provide authoritative information for catalogers, researchers, and data providers. The vocabularies grow through contributions. In the new linked, open environments, they provide a powerful conduit for research and discovery for digital art history. To search the vocabularies, click on the links below.




### The Art & Architecture Thesaurus (AAT)®

*Catherine wheel or rose window?* AAT is a structured vocabulary, including terms, descriptions, and other metadata for generic concepts related to art, architecture, conservation, archaeology, and other cultural heritage. Included are work types, styles, materials, techniques, and others.




### The Getty Thesaurus of Geographic Names (TGN)®

*Thebes or Diospolis?* TGN is a structured vocabulary, including names, descriptions, and other metadata for extant and historical cities, empires, archaeological sites, and physical features important to research of art and architecture. TGN may be linked to GIS, maps, and other geographic resources.



### The Cultural Objects Name Authority (CONA)®

*Mona Lisa or La Gioconda?* CONA compiles titles, attributions, depicted subjects, and other metadata about works of art, architecture, and other cultural



### The Union List of Artist Names (ULAN)®

*Titian or Tiziano Vecellio?* ULAN is a structured vocabulary, including names, biographies, related people, and other

**Click the heading**

**See What's New**

- Multilingual & multi-cultural AAT: Conservation terms; Dutch: 60,600; Spanish: 55,000; Chinese: 26,000; German: 20,500

**Have a Question?**

- Contact the Vocabulary Program
- Subscribe to GRI News

# Find Getty Vocab Online

Search online  
Relational Tables  
Web Services APIs  
XML  
LOD (GVP and Linked.Art)  
SPARQL end point  
OpenRefine Reconciliation

Open Data Commons  
Attribution License  
(ODC-By) 1.0

Contact us:  
vocab@getty.edu



http://www.getty.edu/research/tools/vocabularies/index.html

The screenshot shows the Getty Research Institute website. At the top, the navigation bar includes 'Exhibitions & Events', 'Special Collections', 'Library', 'Search Tools & Databases', 'Scholars & Projects', 'Publications', and 'About the GRI'. Below the navigation bar, there are 'Print' and 'Share' icons. The main content area is titled 'Search Tools & Databases' and features a sidebar with a list of search tools including 'Primo Search', 'Getty Research Portal', 'Collection Inventories & Finding Aids', 'Photo Archive', 'Research Guides', 'Bibliography', 'Digital', 'Article', 'Collection', 'Research', 'BHA &', 'Getty', 'Art', 'The', 'Cult', 'Aut', 'Get', 'Ge', 'Unic', '(UL', 'Con', 'Edit', 'Get', 'Link', 'Fre', 'Obt', 'Voc', and 'Trai'. The main heading is 'Getty Vocabularies' with a 'NEW' tag. Below this, a message states: 'The Getty vocabularies are now available as Linked Open Data. Learn more.' An orange callout box points to the heading with the text 'Click the heading'. The central focus is the 'Art & Architecture Thesaurus® Online' search interface, which is highlighted with a blue border. It contains a search box with the text 'scroll OR papyri', a 'Search' button, a 'Clear' button, and a 'Help' button. Below the search box are radio buttons for 'AND' and 'OR', and a 'Note:' field. At the bottom of the interface, there are links for 'Pop-up Search' and 'Browse the AAT hierarchies'. To the right of the search interface, there is a 'See What's New' section with a bullet point: 'Multilingual & multi-cultural AAT: Conservation terms; Dutch: 60,600; Spanish: 55,000; Chinese: 26,000; German: 20,500'. Below this is a 'Have a Question?' section with a link to 'Contact the Vocabulary Program' and a link to 'Subscribe to GRI News'.

# History

Art History Information Program (AHIP)

**Getty was trailblazer in committing resources to standards and vocabularies for art information in 1980s**

TAU, Thesaurus Artis Universalis; CIHA, Comité international d'histoire de l'art

**Getty engaged disparate communities (visual resources, museums, libraries, special coll., archives, some scholars) under Getty leadership to reach consensus**



1997

# History

International Terminology Working Group (ITWG)

**Over the years, Vocab**  
**have changed with the**  
**requirements of our**  
**core community**

**Getty partners with**  
**international visual**  
**arts information**  
**community**

**Multilingual,**  
**multicultural, inclusive**

**Staff:** Small editorial  
staff, working with one  
person at Getty Digital  
and consultants  
Ontotext

**Contributions:** Rely  
upon contributors'  
having compatible and  
good quality data;  
technology



2020

Getty



# Purpose and Context: Getty Vocabularies

## Why Getty Vocabularies?

- For some users, purpose is to promote consistency in assignment of preferred terms, or to provide multiple synonyms from which to choose, in cataloging and documentation
- For other users, to link to the unique ID or otherwise reconcile to Getty Vocabularies' data
- For other users, in retrieval and discovery, to utilize variant terms, broader/narrower contexts, rich contextual data
- For others, look-up resources of information

# Purpose and Context: Getty Vocabularies

- **Structured, linked vocabularies**: [AAT](#), [TGN](#), [ULAN](#), [CONA](#), [IA](#)
- **Relationships**: Thesauri, 3 relationships: equivalence (synonyms), hierarchical (broader-narrower), associative (btwn records, not hierarchical)
- **Standards-compliant**: Comply with standards for controlled vocabularies (ISO, NISO)
- **Rich knowledge bases**: not simple ‘value vocabularies’
- **Authoritative**: Vocabularies cite authoritative sources and contributors; but not authoritarian (may use variant terms)
- **Scope**: Getty Vocabularies strive to be ever more multilingual, multicultural, and inclusive, within domain of visual arts
- **Target Domain**: Since 1980s, traditional audience (art and architecture domains: visual resources, catalogers, museums), plus scholars, and related disciplines (archaeology, conservation)
- **Collaborative**: Grow through contributions from expert user community: > 350 institutions, consortia, scholarly projects, and individual scholars

# Purpose and Context: Getty Vocabularies

- **How to make Getty Vocabularies more**

Multilingual  
Multicultural  
Diversity  
Inclusive  
Equity  
Unbiased  
Antiracist  
Accessible

- In a global environment where we strive to be more open and equitable, while maintaining high standards for scholarship and research, Getty Vocabularies intend to provide appropriate terms for art history and related disciplines
- We do not yet have all the answers – successful resolutions in a rapidly changing world will be ongoing, occurring over months and years, and in concert with the expert contributor and user communities of Getty Vocabularies
- Features of Getty Vocabularies that can allow multiple views of data to accommodate multilingual, multicultural, and inclusive access: polyhierarchy; associative relationships; preferences on language, sources, contributors; other flags; coreferences. See discussion at [https://www.getty.edu/research/tools/vocabularies/Vocabs\\_unbiased\\_terminology.pdf](https://www.getty.edu/research/tools/vocabularies/Vocabs_unbiased_terminology.pdf)

**Catalog Level:** item **Classification:** paintings  
**Work Type:** hanging scroll [AAT 300265079] **H:** Current  
**Work Type:** folding screen [AAT 300265156] **H:** Historical

**Title:** Scene of Early Spring **Type:** repository **Lang.:** English  
**Title:** 宋郭熙早春圖 軸 **Type:** repository **Lang.:** Chinese

**Creator Display:** Guo Xi, Song Dynasty

**Index:** Guo Xi (Chinese painter, 1023 - ca.1085 CE)  
[ULAN 500125758] **Role:** artist

**Creation Date:** 1072 CE; fifth year of Xining, first era of the  
Shenzong Emperor, Northern Song Dynasty

**Index: Start Date:** 1072 **End Date:** 1072

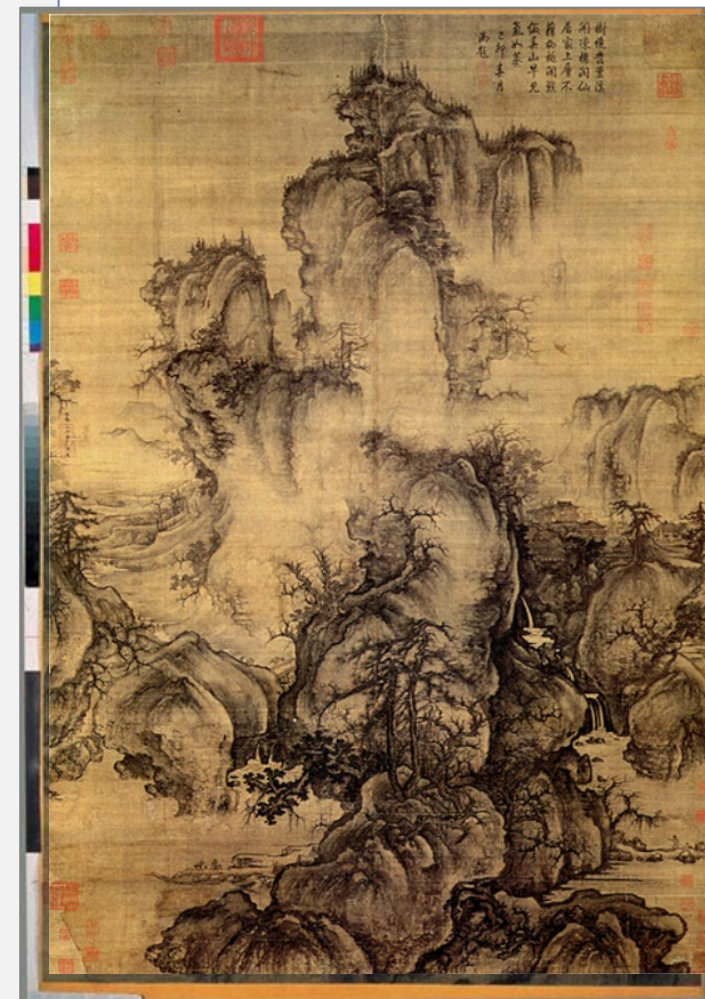
**Materials Display:** painted scroll

**Index: color (pigment)** [AAT 300264870]

**Index: ink** [AAT 300015012]

**Index: silk (silkworm material)** [AAT 300014072]

**Index: paper (fiber product)** [AAT 300014109]



<http://vocab.getty.edu/page/cona/700002851>

[continued]

**Dimensions:** 158.3 x 108.1 cm

**Index: Value:** 158.3 **Unit:** cm **Type:** height

**Index: Value:** 108.1 **Unit:** cm **Type:** width

**Location:** National Palace Museum (Taipei, Taibei, Taiwan)

**[ULAN 500309392 ] Type:** current

**[TGN 1000959 ]**

**Repository No.:** Meta Data identification: 000053N000000000

**Credit Line:** National Palace Museum

**Location:** Bianliang (China) **[TGN 7001845 ] Type:** original

**Inscription:** On the right side, the painter wrote: "Early Spring. Painted by Guo Xi in the year of Ren-Zi (49th year of the Chinese sexagenary cycle, referring to 1072 AD)."; 畫幅右側畫家自題：「早春。壬子（1072）年郭熙畫。」顧名思義，這幅畫作是在描寫瑞雪消融，雲煙變幻，大地復甦，草木發枝，一片欣欣向榮的早春景象

**General Subject:** landscapes

**Specific Subjects:** Renewal of Life **[IA 901002238]**

spring (season) **[AAT 300133097]** | shan shui **[AAT 300387301]**

trees **[AAT 300132410]** | streams **[AAT 300008699]**

Pinus (genus) **[AAT 300343658]** | travel **[AAT 300080094]**

floating perspective **[AAT 300438516]** **Extent:** design element

**Descriptive Note:** Early Spring is here conceived of as a mist and forest filled mountain. The brushwork registers infinite variations of pressure and ink: the silhouette of the rocks and boulders are delineated with a heavy touch, the fog-washed trees with a light one....

**Sources:** National Palace Museum database (2008-); Yangqiu, Viewing Metaphor: Work of Early Spring (2010)



<http://vocab.getty.edu/page/cona/700002851>

# Getty Vocabularies: Based in Standards

## Standards for data content and structure

There are several types of controlled vocabularies and related specifications relevant for art and other cultural heritage information

- Subject heading lists
- Controlled lists
- Synonym ring lists
- Authority Files
- Taxonomies
- Alphanumeric classifications
- **Thesauri**
- Ontologies
- Folksonomies

Getty Vocabularies are thesauri

# Getty Vocabularies: Based in Standards

## Getty Vocabularies Are Thesauri

- Thesaurus: A semantic network of unique concepts
- Thesauri may be monolingual or multilingual
- Thesauri may have the following three relationships:
  - Equivalence Relationships
  - Hierarchical Relationships
  - Associative Relationships

**Objects Facet** *hierarchical*  
.... **Furnishings and Equipment**  
..... **Containers**  
..... **<culinary containers>**  
..... **<vessels for serving / consuming food>**  
..... **rhyta**



**stirrup cups**  
**coaching glasses**  
**hunting glasses**

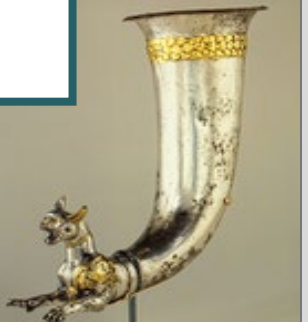


**sturzbechers**  
**Sturzbecher**  
**stortebekers**

*associative*

*distinguished from*

**rhyta** *equivalence*  
**rhyton**  
**rhytons**  
**rhea**  
**rheon**  
**rheons**  
**ritón**



# Getty Vocabularies: Based in Standards

- Compliant with national (NISO) and international (ISO) standards for thesaurus construction: ISO 25964-1:2011; ISO 25964-2:2013; ANSI/NISO Z39.19
- Getty Vocabularies are compliant with / map to other standards:
  - CDWA (Categories for the Description of Works of Art)
  - CCO (Cataloging Cultural Objects)
  - VRA Core (Visual Resources Association core categories)
  - LIDO (Lightweight Information Describing Objects)
  - CIDOC CRM (CIDOC Conceptual Reference Model) (ISO 21127:2014)
- Editorial rules are based on common practice, reflect best practice



# Getty Vocabularies Data Are Linked

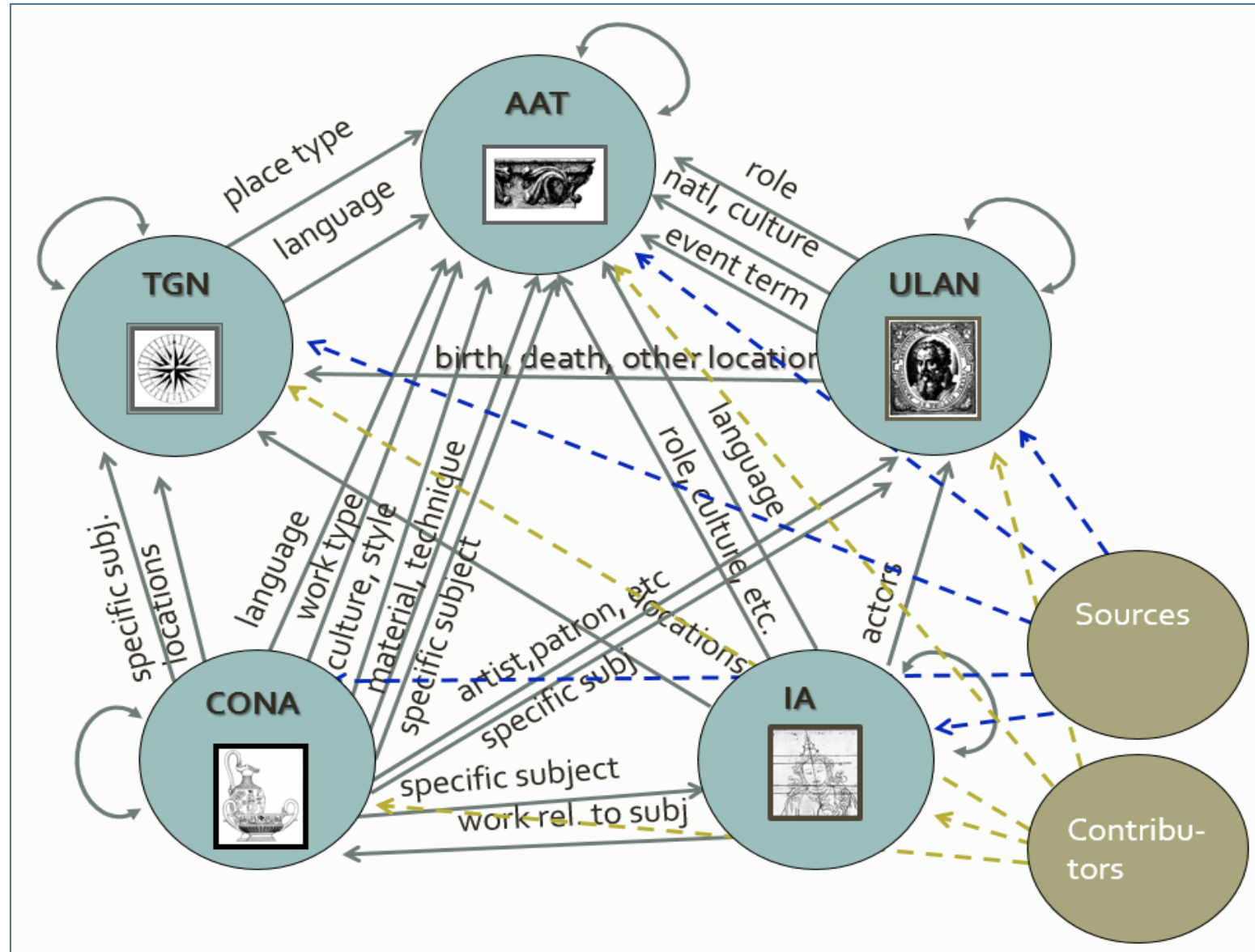
Links between Vocabularies and **rich data** structure

**Not simple 'value vocabularies'**

Link to outside resources as well; **Coreferences**

Data is structured and published in standard way to be interlinked and made openly accessible and shareable on the Semantic Web

**Digital Art History**



# Getty Vocabularies Data Releases

## Data releases

- Contributed data is compiled, merged, edited, and published by the Getty; refreshed monthly
- **Open Data Commons Attribution License (ODC-By) v1.0**
- Allows sharing, creation, adaptation of data with attribution
  
- **Data is made available in various ways, standards, conventions for markup and for linked structured data**
  - Online searching,  
<https://www.getty.edu/research/tools/vocabularies/index.html>
  - Web services APIs, relational tables, and XML format
  - Linked Open Data: structured and published to make it openly accessible and shareable on the Semantic Web:  
**JSON, RDF, N3/Turtle, N-Triples** formats
  - Future: **MARC** mapping and transform [?]

<https://www.getty.edu/research/tools/vocabularies/>

# Meet the Getty Vocabulary Program

- PhD or MA in Art History, or MLIS with strong Art History
- All are recognized experts in vocabulary creation
- Cross-trained on all Getty Vocabularies

Contact us: [vocab@getty.edu](mailto:vocab@getty.edu)



# Meet the Getty Vocabulary Program

## What do we do?

- Getty Research Institute
- Vocabs grow through contributions: We train contributors, process incoming contributions, 1000s per year
- Is data compliant with standards, within scope, correct? Updates published regularly by Getty Digital
- Outreach, workshops, individual training
- Contact us: [vocab@getty.edu](mailto:vocab@getty.edu)

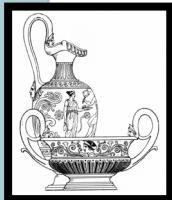
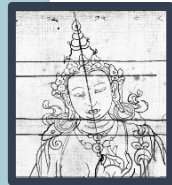
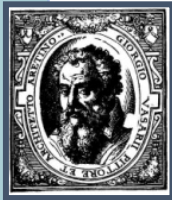


# What Are Getty Vocabularies?

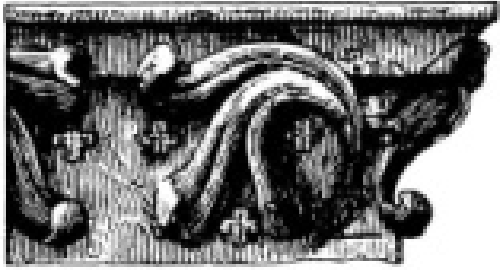
Catalog, index, document, retrieve, research, discover

# Scope and Coverage: Getty Vocabularies

- **AAT**, *Art & Architecture Thesaurus*® includes generic terms in several languages, relationships, sources, and scope notes for agents, work types, roles, materials, styles, cultures, and techniques (e.g., *amphora, oil paint, olieverf, peintures à l'huile, acetolysis, 玉器, Jadekünste, sintering, orthographic drawings, Olmeca, Rinascimento, Buddhism, watercolors, asa-no-ha-toji*)
- **TGN**, *Getty Thesaurus of Geographic Names*® includes names, relationships, and coordinates, with special focus on historical information for current cities, historical nations, empires, archaeological sites, lost settlements, and physical features as necessary for cataloging art; not GIS but may include coreferences to GIS and maps (e.g., *Diospolis, Acalán, Ottoman Empire, Mogao, Ch'ien-fu-tung, Ganges River, गंगा नदी*)
- **ULAN**, *Union List of Artist Names*® includes names, relationships, notes, sources, and biographical information for artists, architects, firms, studios, repositories, patrons, and other individuals and corporate bodies, both named and anonymous; may include coreferences to other resources for same entity (e.g., *Mark Rothko, Cai Xiang, 蔡襄, Crevole Master, Riza Abbasi, Altobelli & Molins, Rajaraja Museum*)
- **IA**, *Getty Iconography Authority*™ includes proper names, relationships, and dates for iconographical narratives, religious or fictional characters, historical events, names of literary works and performing art; special focus on non-Western with coreferences to other resources including Iconclass for Western (e.g., *Viaggio dei Re Magi, Flood of Deucalion, French Revolution, Olouaipilele, Xibalba, Niflheim, शिव, Shiva, Bouddha couché*)
- **CONA**, *Cultural Objects Name Authority*® focuses on architecture, multiples, and works depicted in other works; includes titles, artist attribution, creation dates, relationships, and location for works whether extant or destroyed (new contribution: 70,000 works from BWR) (e.g., *Chayasomesvara Temple, Hagia Sofia, Αγία Σοφία, The Lacemaker, La Dentellière, Merlettaia, Lion Throne Room, 神奈川沖浪, Great Wave, Die große Welle,*)



# Scope and Coverage



- **AAT, Art & Architecture Thesaurus®** includes generic terms in several languages, relationships, sources, and scope notes for work types, roles, materials, styles, cultures, and techniques (477,898 terms)  
(e.g., *amphora*, *literati (painters)*, *oil paint*, *olieverf*, *peintures à l'huile*, *acetolysis*, 玉器, *Jadekünste*, *sintering*, *orthographic drawings*, *Olmeca*, *Rinascimento*, *Buddhism*, *emakimono*, *watercolors*, *asa-no-ha-toji*)

Unique features of Vocab may aid in facilitating inclusivity & multicultural content, allowing different views of data based on language, culture, discipline

UNIQUE IDS

LANGUAGES

PREFERENCES

DATES, HIST/CUR

RELS/LINKS--POLY

CREDIT/WARRANT

COREFERENCES

## • AAT, Art & Architecture Thesaurus®

**AAT ID:** 300190536

### Terms:

steel engravings (pref, en-P,PN)

[1000041363] **Contrib.** [VP,BHA] **Sources.**

Gascoigne 1986, Lucie-Smith 1986, Brit 2000-\*

**Qualifier:** visual works

**Date:** from 1792

**Start:** 1792 **End:** 9999

steel engraving (en, SN)

[1000299348] **Contrib.** [VP,BHA] **Sources.** \*

**Qualifier:** visual work

engravings on steel (en) (Hist)

[1000895990] **Contrib.** [Morem] **Sources.** \*

gravures sur acier (fr-N, PFN)

[1000304335] **Contrib.** [CHIN] **Sources.** \*

鋼版刻印 (zh\_TW-P) [1000551901]

**Contrib.** [AS] **Sources.** \*

gāng bǎn kè yìn (zh-Latn-pny-P)

[1000551903] **Contrib.** [AS] **Sources.** \*

staalgravures (nl-P) [1000482814]

**Contrib.** [RKD-AAT ned] **Sources.** \*

gravuras em metal (pt-P)

[1000884616] **Contrib.** [CVAA-BR] **Sources.** \*

## Sample record (partial)

### Terms (cont):

grabados al acero (es-N) [1000429838]

**Contrib.** [CDBP-SNPC] **Sources.** \*

Stahlstiche (de-N) [1000655952]

**Contrib.** [IfM-SMB-PK] **Sources.** \*

### Associative Relationships

produced by ... steel engraving (printing process) [300190536]

distinguished from ... siderographs [300389774] **Date:** from early 1800s

**Start:** 1800 **End:** 9999

### Hierarchical Relationships (poly)

Objects Facet

.. Visual and Verbal Communication (G)

.... Visual Works (hierarchy name) (G)

..... visual works (works) (G)

..... <visual works by material or technique> (G)

..... prints (visual works) (G)

..... <prints by process or technique> (G)

..... <prints by process: transfer method> (G)

..... intaglio prints (G)

..... engravings (prints) (G)

..... steel engravings (visual works) (G)



**Note:** Prints made by the process of "steel engraving (printing process)," in which plates of steel or steel-faced copper are used, having replaced the use of less durable copper plates in the early 19th century...

**Contrib.** [VP,BHA] **Sources.** Gascoigne 1986, Lucie-Smith 1986, Brit 2000-, \*

**Chinese (traditional)** 以鋼版雕刻程序製成的版畫

**Contrib.** [AS] **Sources.** \*

**Dutch** Gravures waarbij de afbeelding is gesneden in een stalen plaat. **Contrib.** [RKD-AAT ned] **Sources.** \*

**German** ..... Druck, der im Verfahren des Stahlstichs hergestellt wurde. **Contrib.** [IfM-SMB-PK] **Sources.** \*

**Spanish** ..... Estampas realizadas mediante el proceso de grabado en acero.... **Contrib.** [CDBP-SNPC] **Sources.** \*

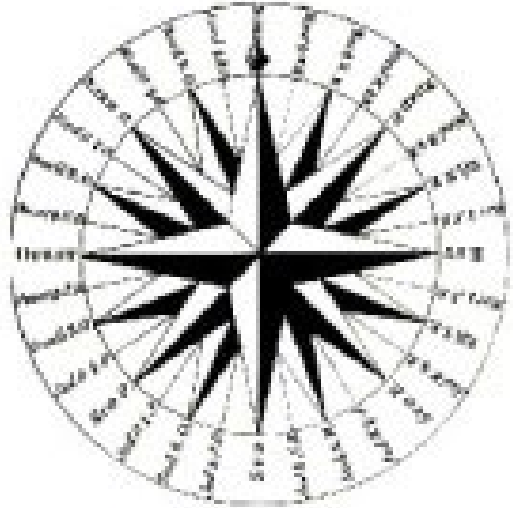
**Contributors:** VP,BHA,CHIN,AS,RKD,IfM-SMB-PK,CDPB-DIBAM

**Sources:** Griffiths, Prints (1996); Hunnisett, Steel-Engraved (2020); Koschatzky, Die Kunst der Graphik (1988);

Thes.Graph.Mat. **tgm010117**; Lucie-Smith, Thames & Hudson Dictionary of Art Terms (1986); Newman, Innovative Printmaking (1997)



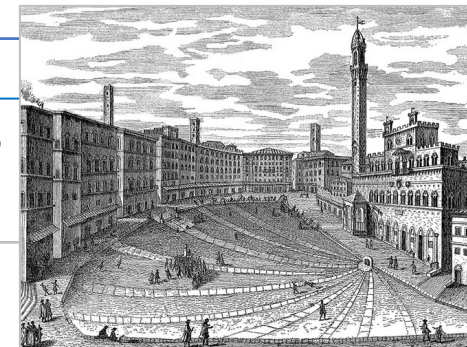
# Scope and Coverage



- **TGN**, *Getty Thesaurus of Geographic Names*<sup>®</sup> includes names, relationships, and coordinates, with special focus in development on historical information for current cities, historical nations, empires, archaeological sites, lost settlements, and physical features as necessary for cataloging art; not comprehensive and not GIS but may include coreferences to GIS and maps (5,316,468 names) (e.g., *Diospolis, Acalán, Ottoman Empire, Axumite Empire, Mogao, Ch'ien-fu-tung, Leptis Magna, Machupicchu, Ganges River, गंगा नदी*)

# ● TGN, Getty Thesaurus of Geographic Names®

## Sample record



**TGN ID:** 7011179

### Names:

Siena (pref,it,en-P) [47413]

*Contrib.* [VP,BHA,Avery]

*Sources.* Annuario Generale 1980, UNESCO (1992); Williams (2010)\*

Sienna [140808]

Sienne (fr-P) [1002860953]

Σιένα (el-P) [1002038443]

锡耶纳 (zh-P) [1002038446]

Сиена (ru) [1002038445]

シエーナ (ja) [1002038441]

Sienese (adj) (en) [1159549]

Senae (hist.) [181416]

*Date:* Medieval

*Start:* 800 *End:* 1500

Sena Julia (hist.) (la) [181415]

Sena (hist.) [181414]

*Date:* Etruscan

*Start:* -800 *End:* 200

### Hierarchical Relationships (poly.)

World (facet)

...Europe (continent)

.....Italy (nation)

.....Siena (province)

.....Siena (inhabited place) (Current)

World (facet)

...Europe (continent)

.....Italian Peninsula (peninsula)

.....Etruria (former group of political entities)

.....Siena (inhabited place) (Hist.)

*Date:* Late Etruscan *Start:* -400 *End:* 100

### Associative Relationships

ally of Pisa ..(inhabited place) [7006082]

*Date:* Ghibelline allies, 13th-14th centuries *Start:* 1250 *End:* 1400

### Contributors:

VP,BHA, Avery,GRI

*Sources:* Annuario Generale (1980); NGA/NIMA database (2003-) -129709; Library of Congress Authorities n 79013822; UNESCO World Heritage Centre [online] (1992-); VIAF: Virtual International Authority File [online] (2009-) VIAF ID: 239842096 (Geographic)

### Place Types

inhabited place

*Date:* settled by Etruscans (flourished 6th century BCE) *Start:* -800 *End:* 9999

city

archiepiscopal see

AAT

commune (administrative)

*Date:* since 1125 *Start:* 1125 *End:* 9999

cultural center

university center

world heritage site

*Lat:* 43 19 07 N (43.3180)

*Long:* 011 19 50 E (11.3300)

*Elevation:* 1056.430 feet (322.0000 meters)

*Note:* Siena was founded as an Etruscan hill town; later was the Roman city of Sena Julia (3rd century BCE). It flourished under the Lombard kings (6th century CE) and was Medieval self-governing commune ...

UNIQUE IDS

LANGUAGES

PREFERENCES

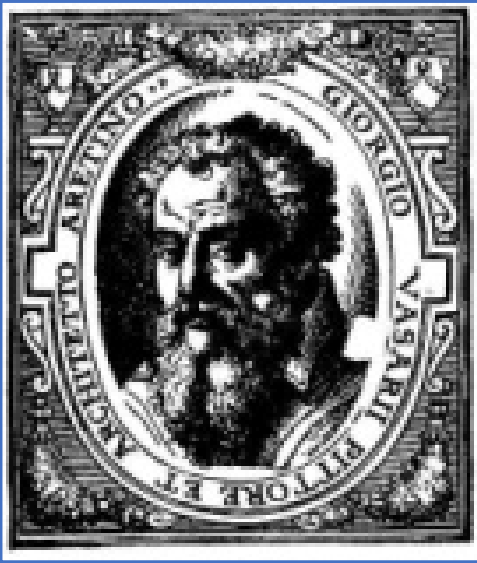
DATES, HIST/CUR

RELS/LINKS--POLY

CREDIT/WARRANT

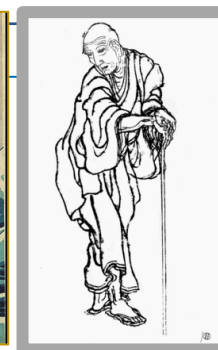
COREFERENCES

# Scope and Coverage



- **ULAN**, *Union List of Artist Names*® includes names, relationships, notes, sources, and biographical information for artists, architects, firms, studios, repositories, patrons, other individuals and corporate bodies, both named and anonymous; may include coreferences to other resources (1,470,142 names) (e.g., *Mark Rothko*, *Cai Xiang*, 蔡襄, *Crevole Master*, *Riza Abbasi*, *Rajaraja Museum*, *I. M. Pei & Partners*, *Ahuitzotl*, *William Kentridge*, *Frida Kahlo*)

• **ULAN, Union List of Artist Names®**  
Sample record



**ULAN ID: 500060426**

**Names:**

Katsushika Hokusai (en,ja-trans) [1500235399]

*Contrib.* [VP,CCA, Avery]

*Sources.* Bowie (1964), Grove (2022),Met (2003)\*

Hokusai (en,ja-trans) [1500235408]

*Date:* name taken by the artist in 1798, and used for his prints and paintings

*Start:* 1798 *End:* 9999

葛飾 北斎 (ja) [1500705416]

Shunrō (en,ja-trans) *Date:* gō (artist's name), used in his years of training, when painting hosoban (narrow prints) [1500235400]

Sōri (en,ja-trans) *Date:* gō used in early career, named taken from his Rinpa-school master Tawaraya Sōri [1500235401]

Kakō (en,ja-trans) *Date:* used for the production of commercial prints and books [1500235402]

Tatsumasa (en,ja-trans) *Date:* used for the production of privately published illustrations [1500235403]

*Display bio:* (Japanese printmaker, painter, 1760-1849)

*Birth date:* 1760

*Death date:* 1849

*Nationalities:*

Japanese (pref)

*Roles:*

artist

AAT

printmaker

painter

designer

calligrapher

draftsman

landscapist

marine artist

figure artist

ukiyo-e artist

*Gender:* male

*Birth and Death Places:*

Born: Tokyo (Kanto, Japan)) (inhab place)

Died: Tokyo (Kanto, Japan)) (inhab place)

*Events:*

active: Tokyo (Kanto, Japan)) (inhab place)

..... in Edo, modern-day Tokyo

*Associative Relationships:*

teacher of Taito, Katsushika, II

.....(Japanese printmaker, active ca. 1820-1850)

child of Nakajima Ise

.....(Japanese mirror maker, 18<sup>th</sup> century)

possibly identified with ... Tōshūsai Sharaku

..... (Japanese printmaker, active 1794-1795)

*Contributors:*

VP, Avery,GRL,BHA,CCA

*Sources:* Bowie, Drawings of Hokusai (1964);

Grove Dictionary of Art online (1999-2002);

Library of Congress Authorities n 80043599 ;

Metropolitan Museum of Art [online] (2003-);

Bouquillard, Hokusai: First Manga Master (2007)

UNIQUE IDS

LANGUAGES

PREFERENCES

DATES, HIST/CUR

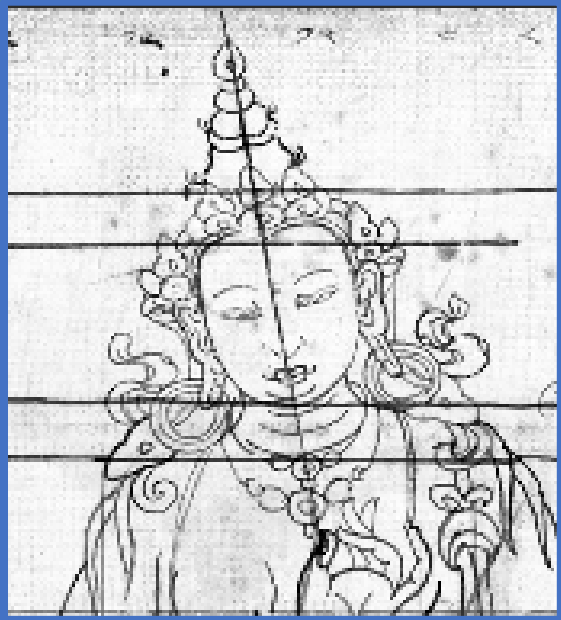
RELS/LINKS--POLY

CREDIT/WARRANT

COREFERENCES

TGN

# Scope and Coverage



- **IA**, *Getty Iconography Authority*<sup>™</sup> includes proper names, relationships, and dates for iconographical narratives, religious or fictional characters, historical events, names of literary works and performing art; special focus on non-Western with coreferences to other resources (7,200 terms) (e.g., *Xibalba*, *Yemonja*, *शिव*, *Shiva*, *Bouddha couché*, *Flood of Deucalion*, *Viaggio dei Re Magi*, *French Revolution*, *Olouaipipilele*, *Niflheim*, *Mithras*)

• IA, Getty Iconography Authority™

Sample record



IA ID 901000085

Names

Avalokiteśvara (pref-en) [5000191]

*Qualifier:* Buddhist bodhisattva

*Date:* name occurs in Sanskrit by 7th century

*Start:* 600 *End:* 9999 *Contrib:* VP,BHA,BWR-P

*Sources:* Bowker (1997); Dunhuang (2010)

Avalokitesvara [5001067]

Avalokitesvara [5003150]

अवलोकितेश्वर (sa) [5001068]

ཡུན་རས་གཟིགས (bo) [5002308]

Spyan ras gzigs [5002309]

*Hierarchical Relationships*

Top of the IA hierarchies

Legend, Religion, Mythology

Buddhist iconography

Buddhist characters

Avalokiteshvara (Buddhist iconography)

*Vocab links*

role/characteristic is ... Bodhisattva [AAT]

symbolic attribute is ... lotus [AAT]

culture/religion is ... Mahayana (Buddhism) [AAT]

culture/religion is ... Theravada (Buddhism) [AAT]

AAT  
TGN  
ULAN  
CONA

*Associative Relationships*

associated with .... Krishna (Hindu iconography)

counterpart is .... Guanyin (Buddhist iconography)

*Display Date:* veneration in India flourished ca. 3rd-7th centuries *Start:* 200 *End:* 9999

*Note* The bodhisattva of infinite compassion and mercy; embodies the compassion of all Buddhas. Known in over 100 manifestations; is portrayed in different cultures as either female or male, as ... ..

*Contributors* VP,BHA,BWR

*Sources* Bowker, Oxford Dictionary of World Religions (1997); Huntington, Art of Ancient India (1985); Encyclopedia Britannica Online (2022-);

*LC:* LC control no.: **sh 85010492**

UNIQUE IDS

LANGUAGES

PREFERENCES

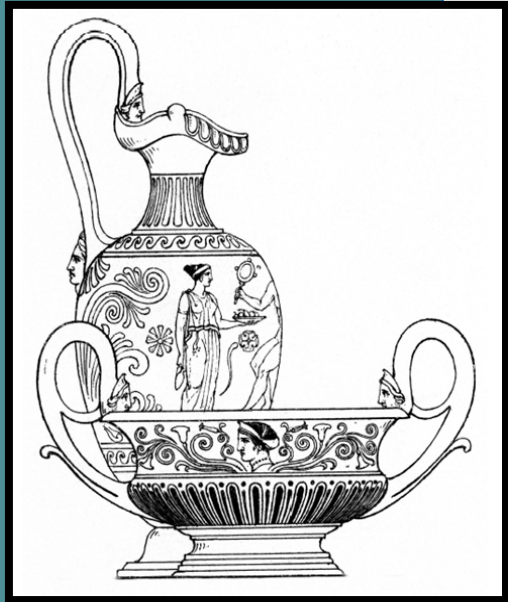
DATES, HIST/CUR

RELS/LINKS--POLY

CREDIT/WARRANT

COREFERENCES

# Scope and Coverage



- **CONA**, *Cultural Objects Name Authority*® titles, artist attribution, creation dates, relationships, and location for works; focuses on architecture, multiples, works depicted in other works, lost works, designed but not built (107,493 titles) (e.g., *Hagia Sofia*, *Αγία Σοφία*, *Adinatha Temple*, *Flatiron Building*, *The Lacemaker*, *Merlettaia*, *La Dentellière*, *Lion Throne Room*, *神奈川沖浪*, *Great Wave*, *Die große Welle*)

• **CONA, Cultural Objects Name Authority®**

Sample record



**CONA ID: 70002923**

**Titles/Names:**

Temple of Heaven (pref- en)

[1000016889]

**Display Date:** renamed in the 16th century **Start:** 1521 **End:** 9999

**Contrib:** JPGM-P,BWR,BHA

**Sources:** BWR database (2019); Great Buildings (2000)-P; UNESCO WHC (1992)

Tian Tan (zh-tr) [1000016890]

T'ien-t'an (zh-trl) [1000019041]

Tiantan [1000016892]

temple du Ciel (fr) [1000019264]

templo del Cielo (es)

[1000019265]

Himmelstempel (de) [1000019266]

壇 (zh) [1000016894]

天坛 (zh) [1000016893]

천단 (ko) [1000019043]

**Catalog Level:** item

**Work Types:** temple complex

**AAT**

**Classification:** Architecture

**Creation Date:** construction 1406-1420; extended 16th century **Start:** 1406 **End:** 1420

**Qualifier:** construction

**Creator Display:** **ULAN**

first built by Ming Chengzu; extended by Ming Shizong; renovated by Qianlong

[ULAN 500356295]

**Role:** patron/38121

[ULAN 500372663]

**Role:** patron/38121

[ULAN 500372572]

**Role:** patron/38121

**Locations:**

**Location** current Beijing (Beijing Shi (municipality), China) (nation) **Address Note:** +39.913889,+116.391667

**TGN**

**Dimensions** [display] entire complex: 237 hectares

**Mat & Tech** [display] wood and stone

wood **AAT 300011914** | stone **AAT 300011176**

**Style:** Chinese [AAT 300018322] | Taoist [AAT 3001

**AAT**

**General Subject:**

architecture **Type:** isness

religion and mythology **Extent:** purpose

**Specific Subjects:**

Heaven [AAT 300185658] **Extent:** dedication

Chinese heaven [IA 901002236]

**AAT**  
**TGN**  
**ULAN**  
**CONA**  
**CONA IA**

**Note:** Large religious complex in the old outer city comprises three buildings are built in a straight line

**Contributors:**

JPGM; VP; GRISC; BHA; BWR;

**Sources:** Built Works Registry **BWR3792244**; Library of Congress Authorities online (2002-) **n2011019454**;

Fodor's Travel (2016); J. Paul Getty Museum, collections online (2000-); Great Buildings Online (1997-); UNESCO World Heritage Centre [online] (1992-) **Ref: 881**

UNIQUE IDS

LANGUAGES

PREFERENCES

DATES, HIST/CUR

RELS/LINKS--POLY

CREDIT/WARRANT

COREFERENCES



# Activities of Getty Vocabulary Program

Catalog, index, document, retrieve, research, discover

# Mission of the Getty Vocabulary Program

The mission of the Getty Vocabulary Program (GVP) is to produce rich, structured, authoritative vocabularies, in compliance with international standards, that provide a powerful conduit for inter-related, linked, and meaningful research, discovery, and understanding of the visual arts and their various histories, in collaboration with the international community, and utilizing training and outreach to inform the field.

One of our primary goals is to broaden and enrich the scope and coverage of the Getty Vocabularies to become ever more multilingual, multicultural, inclusive, and representative of the subjects and priorities of the GRI, the Getty, and global art history.

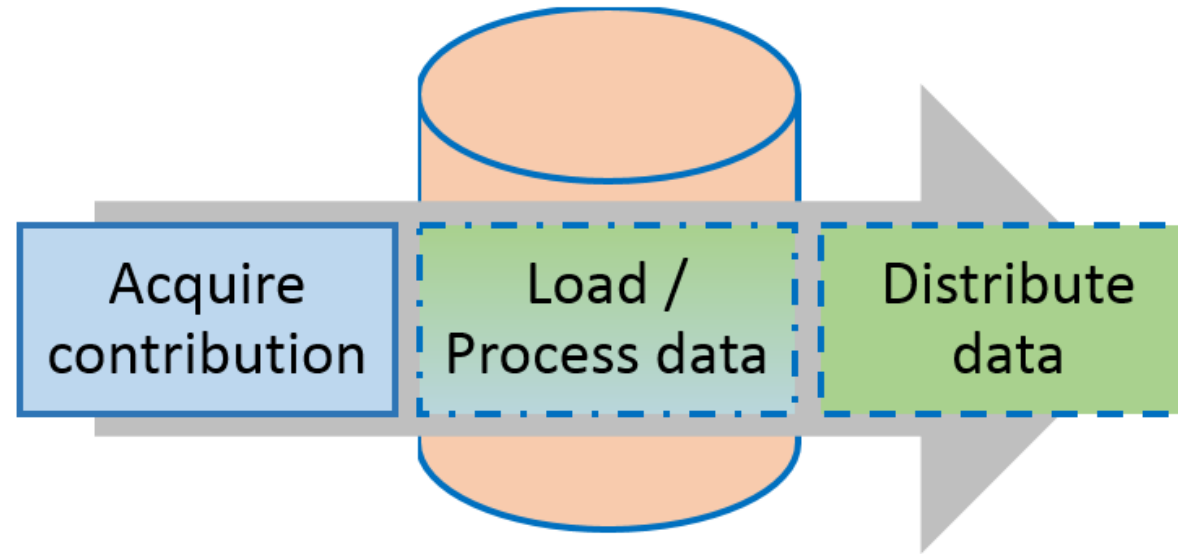
# Activities of the Getty Vocabulary Program

- Processing contributions
- Quality and scope control
- Dissemination of Vocabs
- Integration of Vocabs
- Outreach
- Development of tools
- Training
- Publications

- Contributors' data is loaded by the Getty Digital team and processed by the Getty Vocabulary Program
- Data is merged, normalized, and published
- Exported data is refreshed for users throughout the year
- Releases: Online search, Web services APIs, LOD, XML, and relational tables

# Basic workflow

AAT, ULAN, TGN, CONA, IA



At any time, could be 100s of thousands of candidate records, contributed but still *in process*

Editors have monthly quotas for work done

to allow anticipation of time frame for publications  
to ensure not too much time is spent on unsolvable tasks

# Who are the contributors?

- Getty projects
- > 350 institutions, consortia, other expert groups, projects, scholars

## How is the data generated?

- They may research and create original data for the purpose of contribution  
E.g., translations: Spanish, Dutch, Chinese, German
- Or may map data already collected in the course of their own work  
E.g., repositories and documentation projects
- Contributions:  
10s of thousands per year

## Getty projects are major contributors

Provenance Index	GRI Photo Archive	GCI
GRI Special Collections	GRI Library	JPGM

## Examples of other contributors

Centro de Documentación de Bienes Patrimoniales, Santiago  
Netherlands Institute for Art History

Staatliche Museen zu Berlin Preussischer Kulturbesit  
Academia Sinica of Taiwan

Canadian Heritage Information Network

Istituto Centrale per il Catalogo e la Documentazione, Rome

Avery Architectural & Fine Arts Library

Courtauld Institute

Canadian Centre for Architecture

Frick Art Reference Library

Indiana University Digital Collections

Harry Ransom Center, University of Texas at Austin

Bunting Visual Resources Library, U. of New Mexico

Pinacoteca do Estado de São Paulo

Rijksmuseum in Amsterdam

Mystic Seaport Museum in Connecticut

Smithsonian National Museum of African Art

Grove Art online

Florentine Codex

**National documentation agencies, proj.**

**Image collections, libraries**

**Art repositories**

**Publishers**

**Research Proj.**

# Coordinating Contributions

- Nurturing relationships with contributors
- Advising re. mapping their existing data to format for loading into our editorial system
  - E.g., GRI Szeemann finding aids to ULAN
- Advising re. translation methodology and content issues
- Meetings and online conversations

The **International Terminology Working Group (ITWG)**—a collective of metadata and controlled vocabulary professionals and scholars from North America, Europe, Asia, and the Middle East—meet every year or so to discuss four AAT translation Projects (including the Dutch AAT), as well as new projects, the other vocabularies, and overall the challenges and opportunities in developing and maintaining multilingual electronic thesauri for use by cultural heritage institutions



Getty Vocabulary Program: What We Do

## Steps for receiving and processing contributions

- Communication with the Getty Vocabulary Program
- Are you mapping existing data or making new records?
- Small contributions via email or online contribution form
- Larger contributions are bulk loads
- Click through the contribution agreement
- Send sample files, back-and-forth if there are problems
- Send full data files for bulk loads
- Data must be normalized, reconciled, transformed, and loaded
- Data is vetted, processed, and edited as necessary
- May include merging, if incoming record matches an existing record
- Data is moved from candidate to non-candidate
- Data is published with regular monthly contributions

# Merging candidate data in one record



- Getty vocabularies merge contributed records representing the same concept
- Example from ULAN: Three contributions; are any of these records for the same person?  
Yes, 1st and 3rd rows
- Merged by algorithm, if possible; if not, merged by editors ; OpenRefine reconciliation tool being developed

ULAN ID	Matching name	Display biography	Roles (AAT-controlled)	Nationality (AAT-controlled)	Estimated birth date	Estimated death date
500017409	Guardi, Francesco	Venetian painter, 1712-1793	artist painter landscapist	Venetian Italian	1712	1793
<del>500312969</del>	Guardi, Francesco	Italian noble, born 1514	<u>noble</u>	Italian	<u>1514</u>	<u>1614</u>
500412666	Guardi, Francesco	Italian artist, ca. 1712-1793	artist	Italian	1707	1793

A name matches exactly; role matches; a nationality matches; dates within range?

## Publishing data

- Contributors' data is loaded and processed by the Getty Digital technical team and the Vocabulary Program editorial team
- Data is merged, normalized, and published
- Refreshed for users every two weeks
- Releases: Online search, XML, relational tables, APIs, LOD



# Resulting ULAN record is a merged, homogenous entity




Union List of Artist Names® Online  
Full Record Display


[New Search](#)

[Previous Page](#)

[Help](#)

Click the  icon to view the hierarchy.

[Semantic View](#) ([JSON](#), [JSONLD](#), [RDF](#), [N3/Turtle](#), [N-Triples](#)) [Represent](#)

 **Guardi, Francesco** (Italian painter, 1712-1793)

**Note:** Venetian painter, during the first half of his career he specialized in decorations and church paintings; later became a vedutista (view painter) of Venetian urban life.

## Names:

**Guardi, Francesco** ([preferred](#), [V](#), [index](#), [LC](#))

**Francesco Guardi** ([V](#), [display](#))

**Gardi, Francesco** ([V](#))

**Garde, Francesco** ([V](#))

**Gardis, Francesco** ([V](#))

**Gauda, Francesco** ([V](#))

**Guada, Francesco** ([V](#))

**Guarde, Francesco** ([V](#))

**Guardet, Francesco** ([V](#))

**Gvardi, Franchesko** ([V](#))

**Guardi, François** ([V](#))

**Guardi, Francisco** ([V](#))

## Contributors

AVERY, BHA, GRISC, GRL, GRLPA, PROV, VP, WCI, WCP, WL-Courtauld

## Sources

Avery Authority files (1963-)

Harald Szeemann papers, Finding Aid, GRI Special Collections (2011-)

J. Paul Getty Museum, collections online (2000-)

Library of Congress Authorities database (n.d.) **n 50074509**

M. Knoedler & Co. records, Finding Aid, GRI Special Collections (2012-)

Provenance Index Databases, Authority file (1985-)

RILA/BHA (1975-2000)

Witt Library, Authority files

Merged in one record

Attribution to contributor and source is maintained, but merged and unified, and various “preferred” data is flagged

# Resulting ULAN record is a merged, homogenous entity



## Union List of Artist Names® Online Full Record Display

[New Search](#)

[Previous Page](#)

Click the icon to view the hierarchy.

[Semantic View](#) ([JSON](#), [JSONLD](#), [RDF](#), [N3/Turtle](#), [N-Triples](#)) [Represent](#)

**Guardi, Francesco** (Italian painter, 1712-179

**Note:** Venetian painter, during the first half of his career on decorations and church paintings; later became a vedutista (view painter) of Venetian urban life.

### Names:

**Guardi, Francesco** ([preferred](#), [V](#), [index](#), [LC](#))

**Francesco Guardi** ([V](#), [display](#))

**Gardi, Francesco** ([V](#))

**Garde, Francesco** ([V](#))

**Gardis, Francesco** ([V](#))

**Gauda, Francesco** ([V](#))

**Guada, Francesco** ([V](#))

**Guarde, Francesco** ([V](#))

**Guardet, Francesco** ([V](#))

**Gvardi, Franchesko** ([V](#))

**Guardi, François** ([V](#))

**Guardi, Francisco** ([V](#))

### Contributors

AVERY, BHA, G

Courtauld

### Sources

Avery Authority

Harald Szeem

Collections (20

J. Paul Getty M

Library of Con

M. Knoedler &

Collections (20

Provenance Inc

RILA/BHA (197

Witt Library, A

### Nationalities:

Italian ([preferred](#))

Venetian

**AAT**

### Roles:

artist ([preferred](#))

painter

landscapist

**AAT**

**Gender:** male

**TGN**

### Birth and Death Places:

Born: [Venice \(Venezia province, Veneto, Italy\) \(inhabited place\)](#)

Died: [Venice \(Venezia province, Veneto, Italy\) \(inhabited place\)](#)

### Related People or Corporate Bodies:

member of .... [Guardi family](#)

(Italian painters, active 18th century) [500060865]

parent of .... [Guardi, Giacomo](#)

(Italian painter, 1764-1835) [500023608]

sibling by marriage (in-law) of .... [Tiepolo, Giovanni Battista](#)

(Venetian painter, 1696-1770)

[500018523]

Cecilia Guardi married Tiepolo in 1719

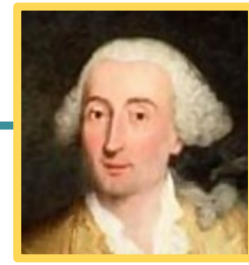
**ULAN**

sibling of .... [Guardi, Antonio](#)

(Italian painter, 1699-1760) [500025094]

sibling of .... [Guardi, Niccolò](#)

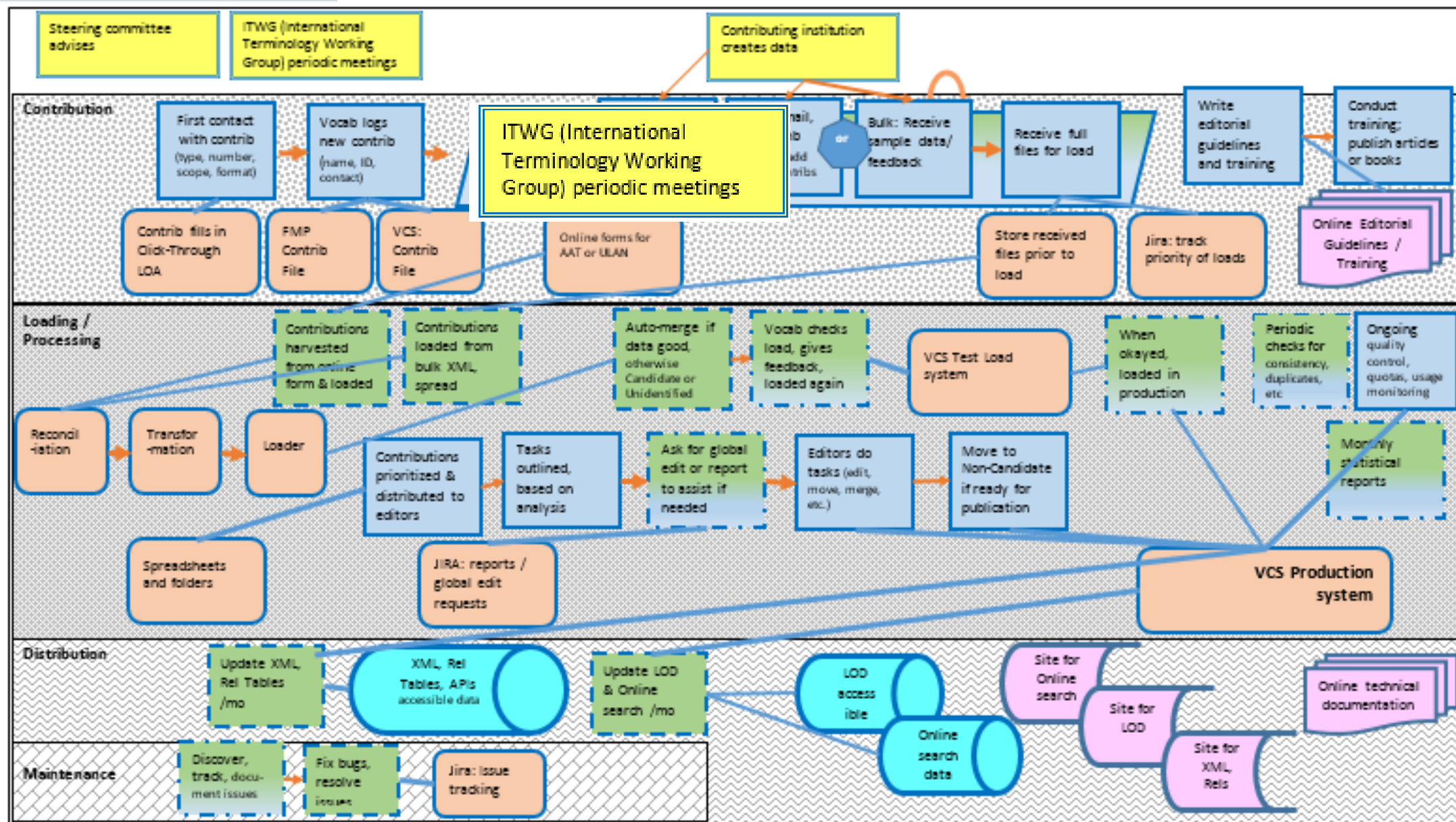
(Italian painter, 1715-1785) [500029088]



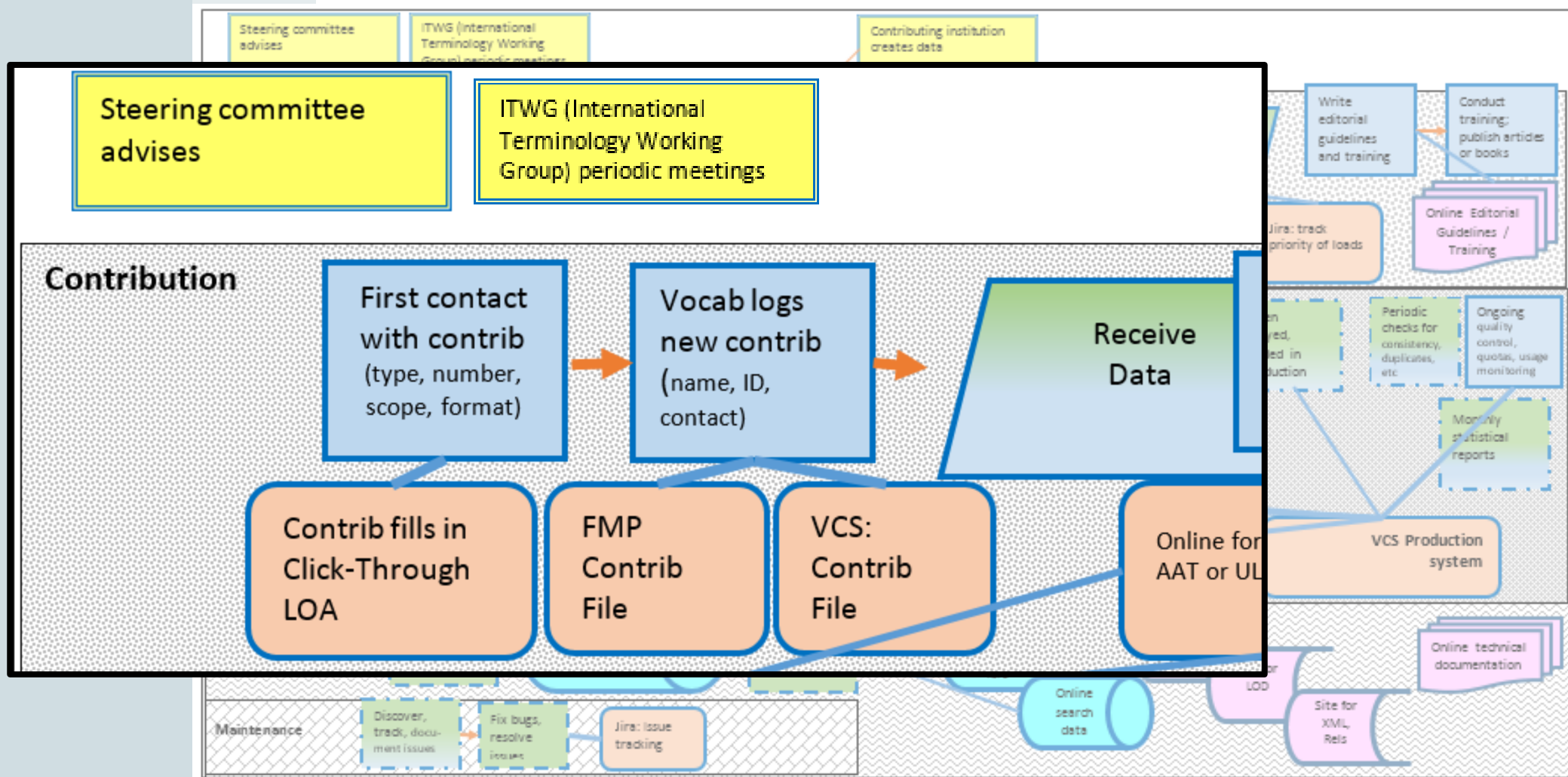
Merged information,  
redundancy eliminated

Note links to other ULAN  
records, to AAT and TGN

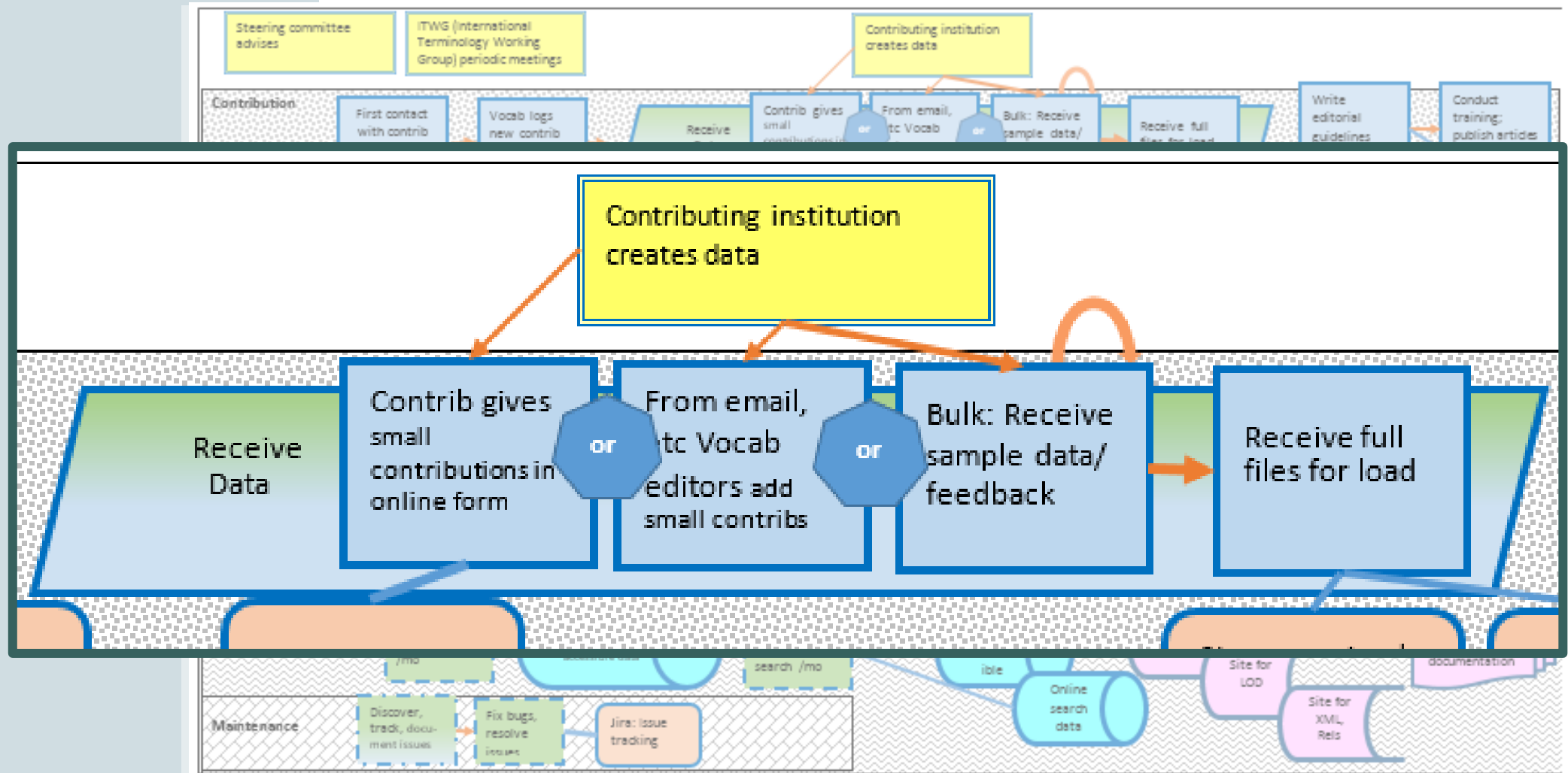
# Systems / Procedures diagram: Getty Vocabularies



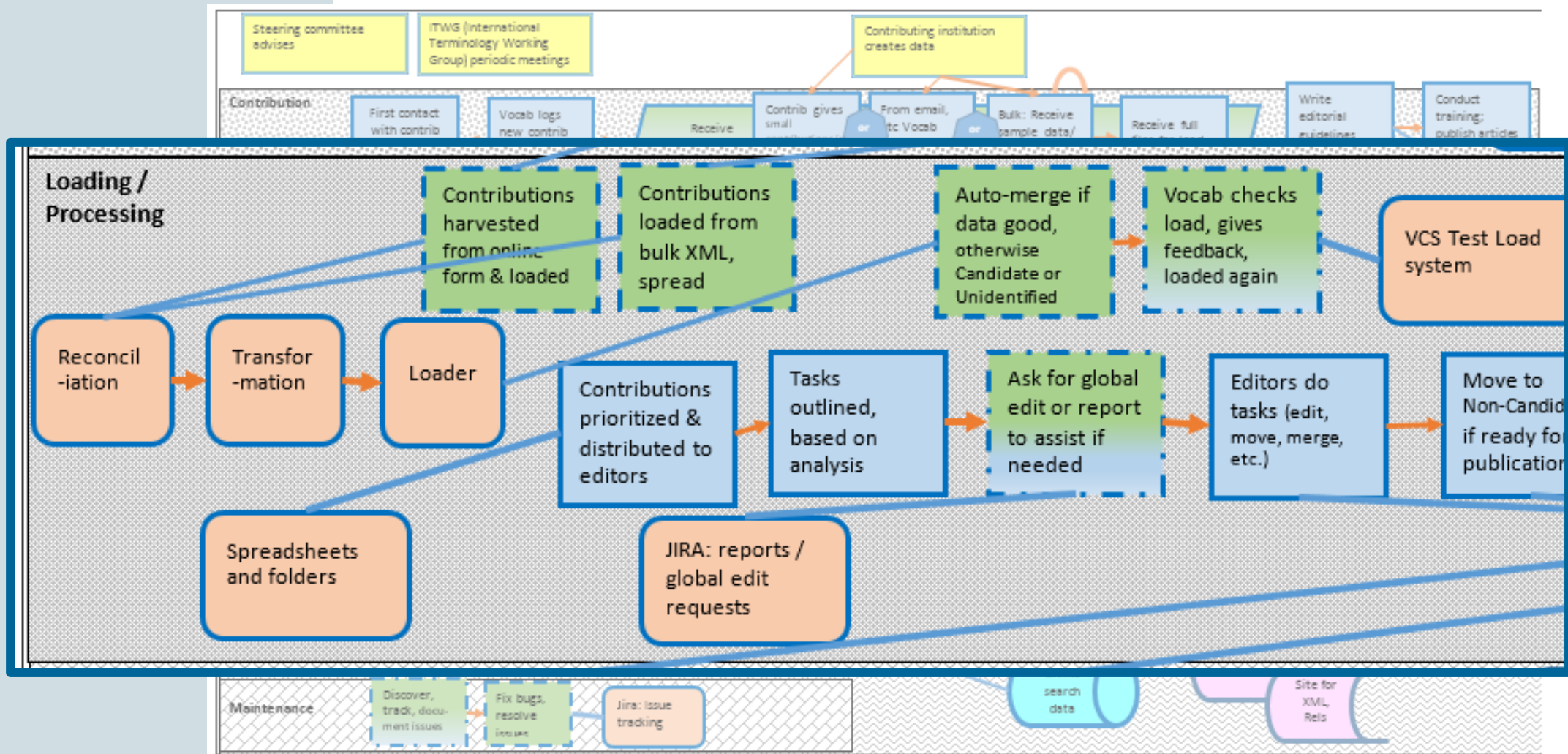
# Systems / Procedures diagram: Getty Vocabularies



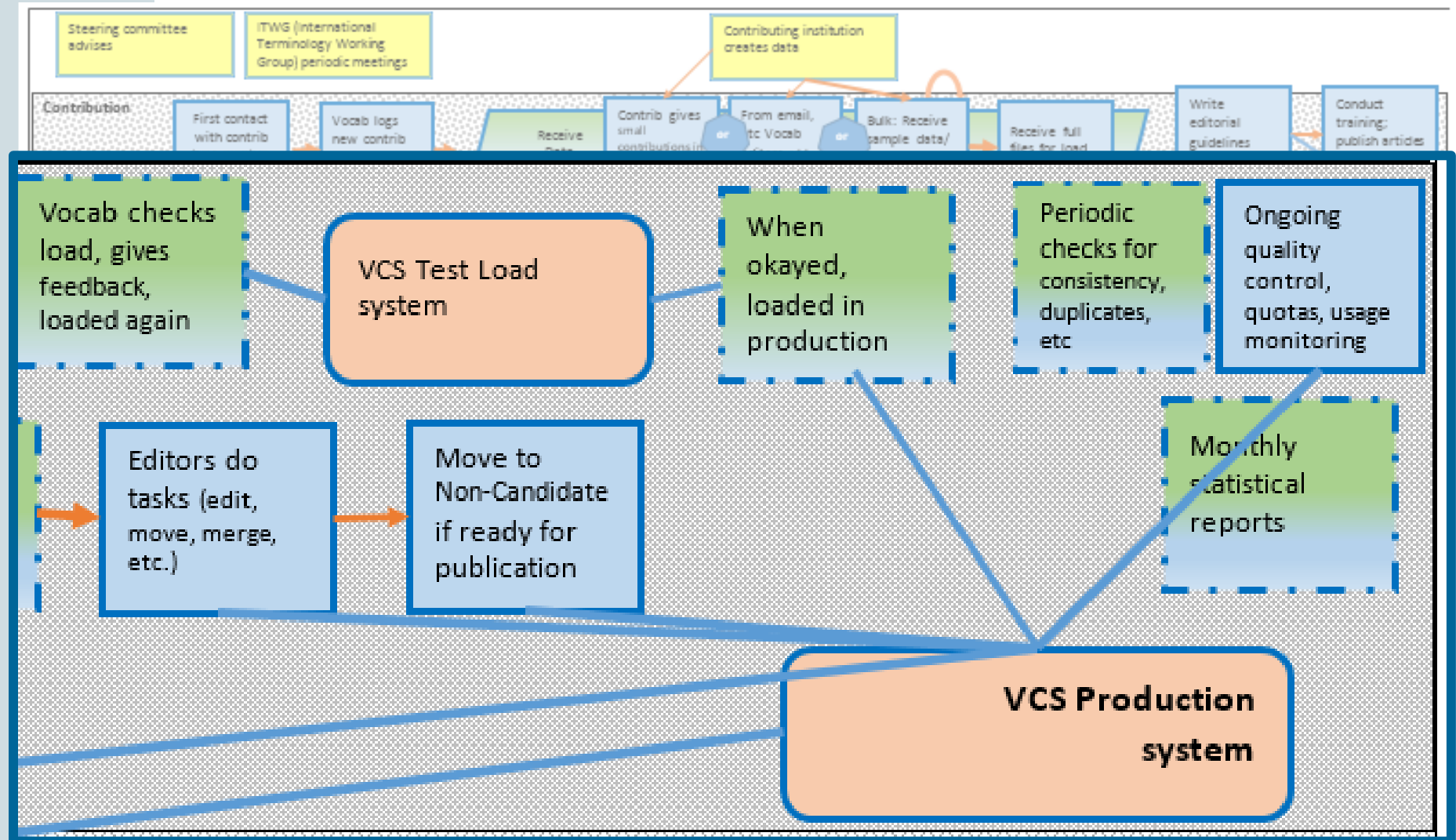
# Systems / Procedures diagram: Getty Vocabularies



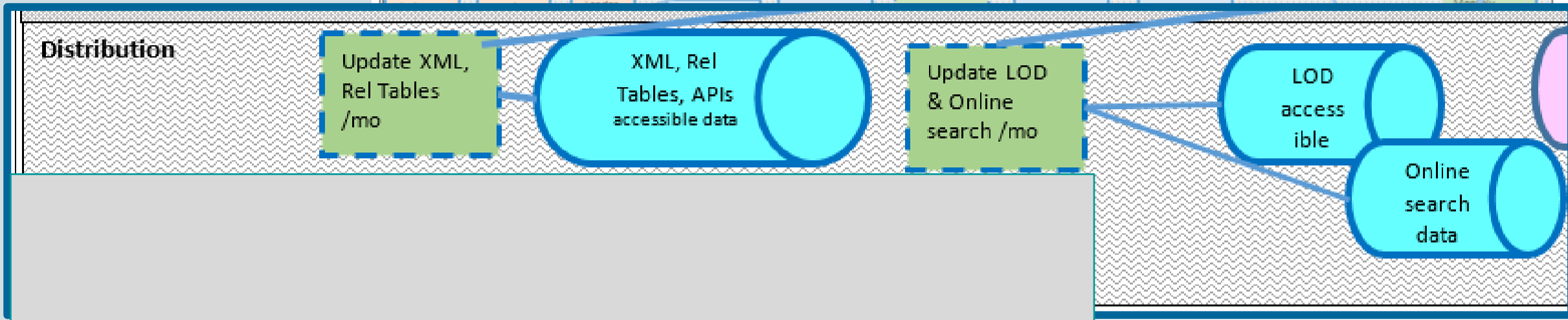
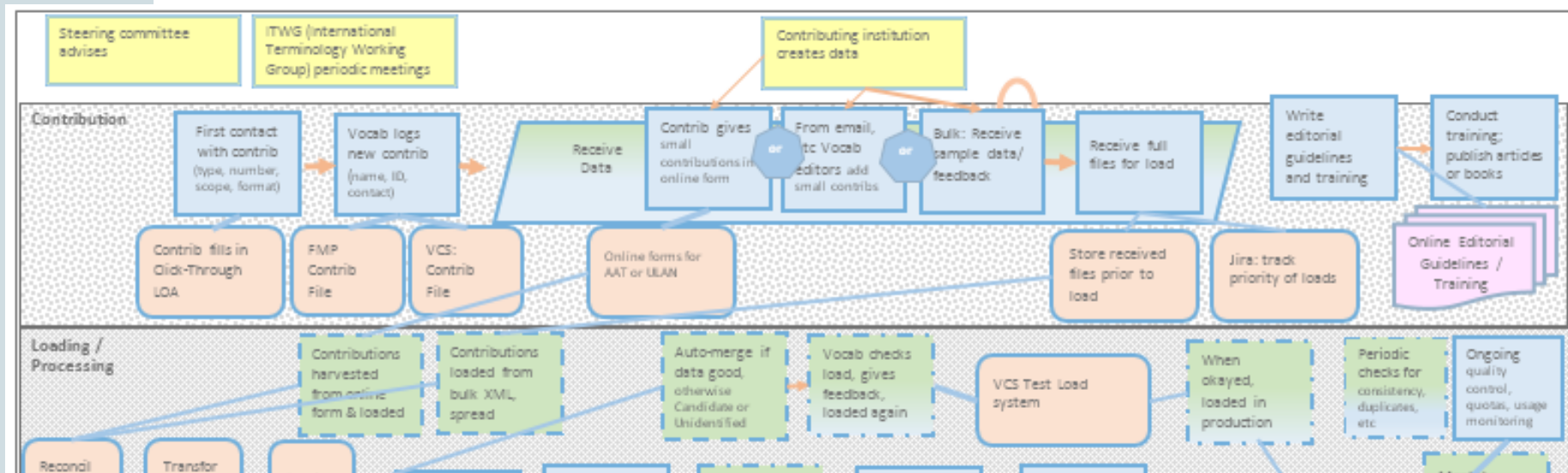
# Systems / Procedures diagram: Getty Vocabularies



# Systems / Procedures diagram: Getty Vocabularies

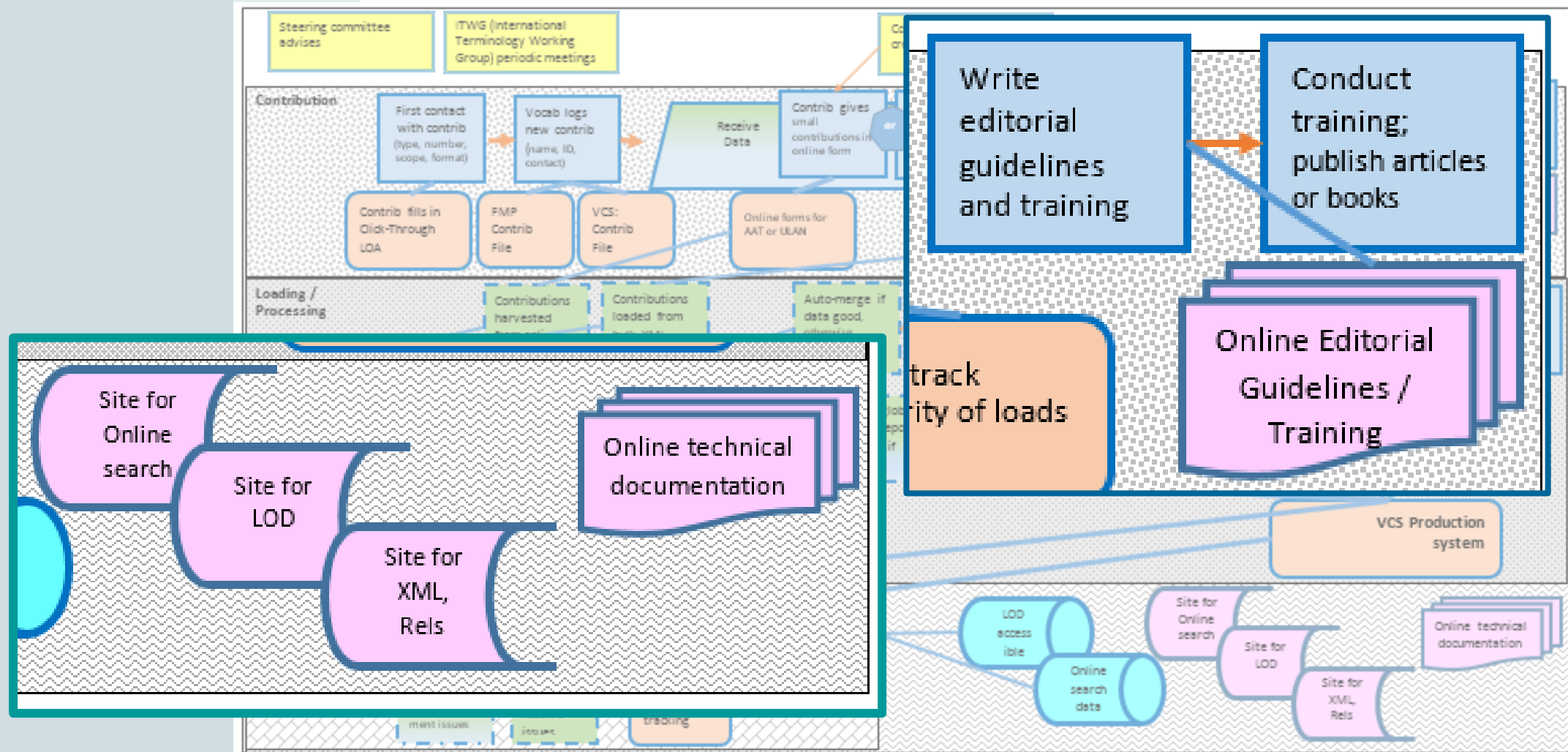


# Systems / Procedures diagram: Getty Vocabularies

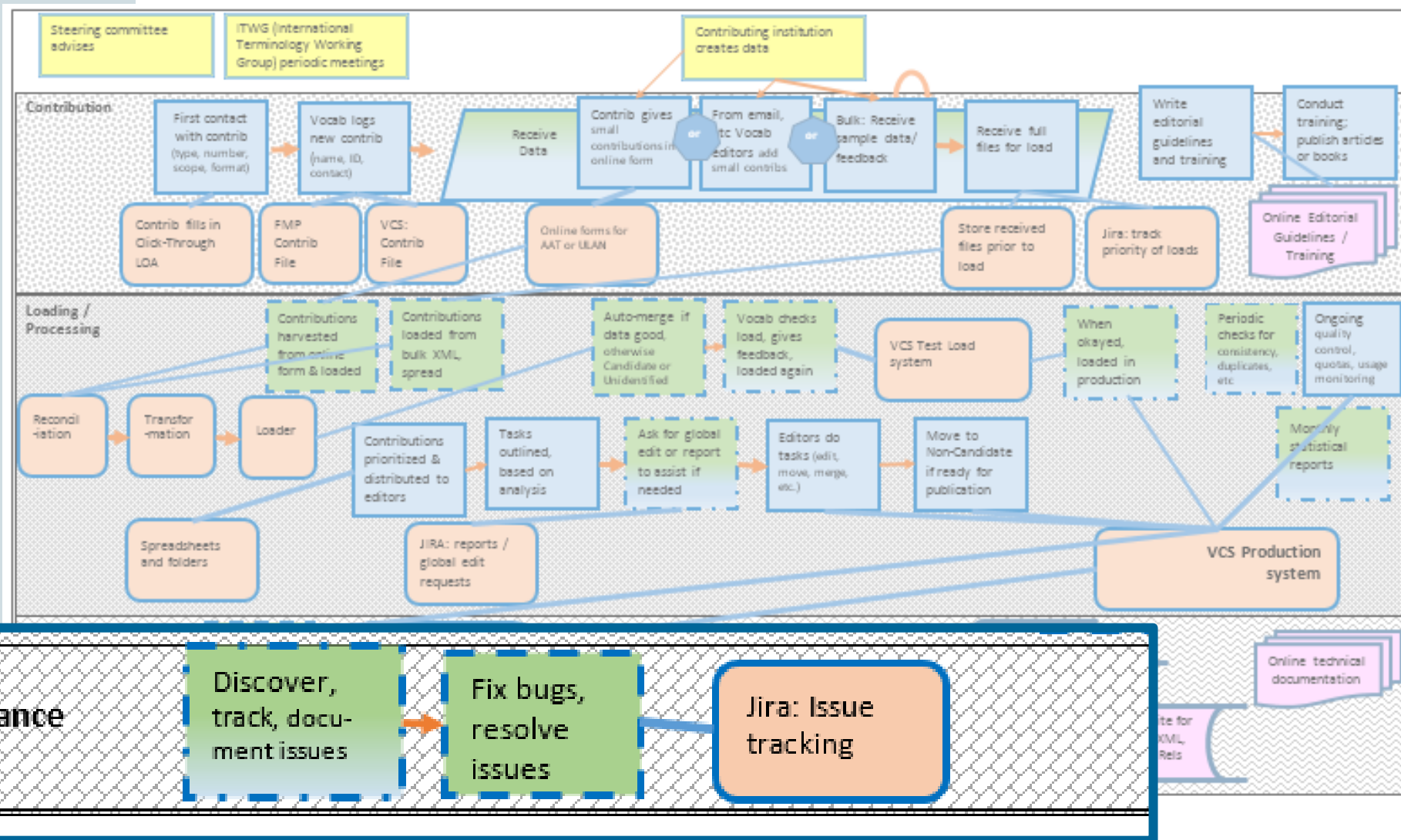




# Systems / Procedures diagram: Getty Vocabularies



# Systems / Procedures diagram: Getty Vocabularies



# Thank you.

---

Patricia Harpring  
Managing Editor  
Getty Vocabulary Program

[pharpring@getty.edu](mailto:pharpring@getty.edu)  
[vocab@getty.edu](mailto:vocab@getty.edu)