



Getty Vocabularies: The Basics

OVERVIEW: ABRIDGED VERSION

Patricia Harpring
Managing Editor
Getty Vocabulary Program

revised May 2020

Getty

Table of Contents

- ▶ Preface 3
- ▶ What Are Getty Vocabularies 6
 - ▶ AAT 14
 - ▶ ULAN 19
 - ▶ TGN 21
 - ▶ IA 23
 - ▶ CONA 25
- ▶ What Do We Do? 34

PREFACE

- **Publications and online resources:**
 - This presentation is a condensed introduction of the Getty vocabularies, AAT, TGN, ULAN, CONA, and IA
 - Editorial guidelines
 - Training materials
 - How to translate
 - Other materials



The screenshot shows the 'Getty Vocabularies' page on the Getty Research Institute website. The page is titled 'The Getty Research Institute' and has a navigation menu with options like 'Exhibitions & Events', 'Special Collections', 'Library', 'Search Tools & Databases', 'Scholars & Projects', 'Publications', and 'About the GRI'. The main content area is titled 'Getty Vocabularies' and includes a 'NEW' section with the text: 'The Getty vocabularies are now available as Linked Open Data. Learn more.' Below this, there is a section for 'Art & Architecture Thesaurus® Online' with a search form. The search form has a 'Find Term or ID:' field, a 'Search' button, and a 'Note:' field. There are also radio buttons for 'AND' and 'OR' search options. Below the search form, there are links for 'Pop-up Search' and 'Browse the AAT hierarchies'. The page also features a 'Linked Open Data' logo and a 'See What's New' section with statistics for the vocabularies.

Art & Architecture Thesaurus® Online

Search the AAT Help

Find Term or ID: Search

AND OR Clear

Note:

[Pop-up Search](#) [Browse the AAT hierarchies](#)

[Copyright information](#)

Search Tips

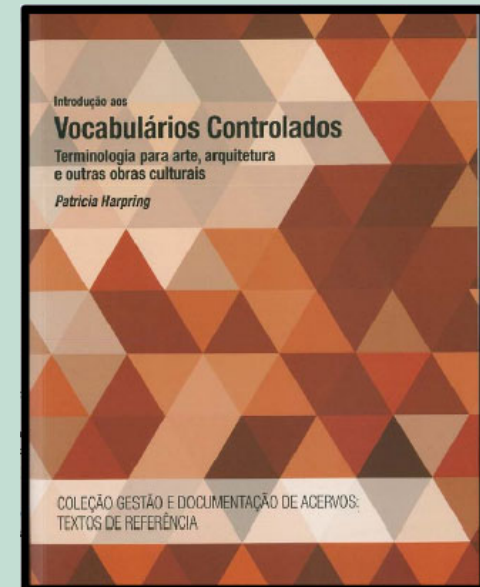
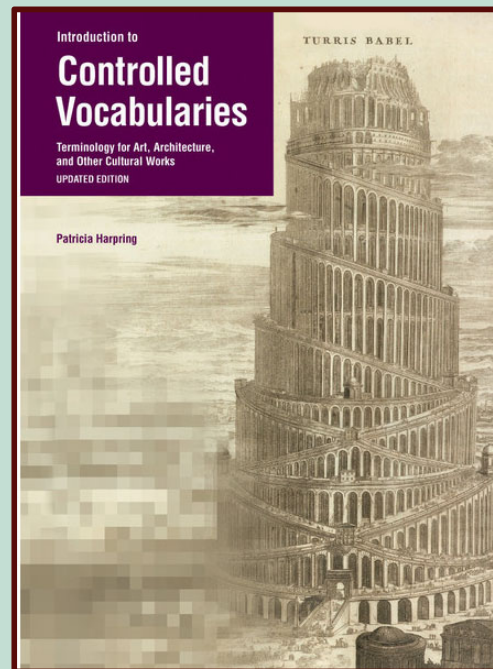
For the Find Term or Note field, you may use **AND** and **OR** (all in upper case) [e.g., 1) windsor chairs. 2) chairs OR rockers. 3) chairs OR rockers OR armchairs. 4) bow-back

[Abridged Overview of Getty Vocabularies](#)

www.getty.edu/research/publications/electronic_publications/intro_controlled_vocab/

PREFACE

- ▶ For basic information on vocabularies, see *Introduction to Controlled Vocabularies* (Harpring, Baca editor, revised 2013) and its bibliography
- ▶ Defines the characteristics, scope, and uses of controlled vocabularies for art and cultural materials, and explains how vocabularies should be integrated in cataloging systems and utilized for indexing and retrieval
- ▶ Available in hardcopy and online
- ▶ Translated in Portuguese in 2016



Getty

Abridged Overview of Getty Vocabularies

PREFACE

- ▶ For basic information on cataloging and standards for art information, see **Categories for the Description of Works of Art** (CDWA), and **Cataloging Cultural Objects** (CCO), a subset of the CDWA
- ▶ Guidelines and the set of required “core” fields, among over 500 total fields, were the result of consensus of participants representing diverse professional communities from several nations: Art museums, art history community, archives, art libraries, special collections
- ▶ CDWA and CCO are complementary to the professional standards of their communities
- ▶ To inform use of other professional standards; maps to other standards



Patricia Harpring © 2019 J. Paul Getty Trust. For educational purposes. Images may be subject to additional copyright

Categories for the Description of Works of Art

Describe, catalogue, link works of art, architecture, and cultural heritage

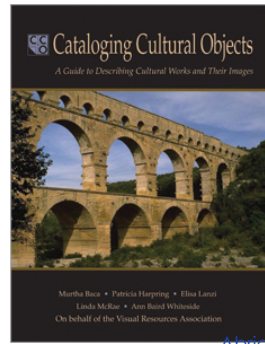


- Introduction
- General Guidelines
- Overview of Categories
- Definitions of Categories
- CDWA Lite
- CDWA
- CATEGORIES: OBJECT, ARCHITECTURE, OR GROUP
- Object/Work +
- Classification +
- Titles or Names +
- Creation +
- Styles/Periods/Groups/Movements
- Measurements +
- Materials and Techniques +
- Inscriptions/

Definitions of Categories

OBJECT, ARCHITECTURE, OR GROUP

- 1. Object/Work **Core**
- 2. Classification **Core**
- 3. Titles or Names **Core**
- 4. Creation **Core**
- 5. Styles/Periods/Groups/Movements
- 6. Measurements
- 7. Materials and Techniques
- 8. Inscriptions/Measurements
- 9. State
- 10. Edition
- 11. Facture
- 12. Orientation/Arrangement
- 13. Physical Description
- 14. Condition/Examination
- 15. Conservation/Prevention
- 16. Subject Matter
- 17. Context
- 18. Descriptive Notation
- 19. Critical Response
- 20. Related Works



Cataloging Cultural Objects: A Guide to Describing Cultural Works and Their Images
 Murtha Baca, Patricia Harpring, Elisa Lanzi, Linda McRae, Ann Baird Whiteside
 Item Number: 978-0-8389-3564-4

Publisher: ALA Editions
 Price: \$103.00

Abridged Overview of Getty Vocabularies

What Are Getty Vocabularies?

Discover, link, access, retrieve, research, catalogue, index

Getty

Abridged Overview of Getty Vocabularies

<http://www.getty.edu/research/tools/vocabularies/index.html>

Getty Vocabularies

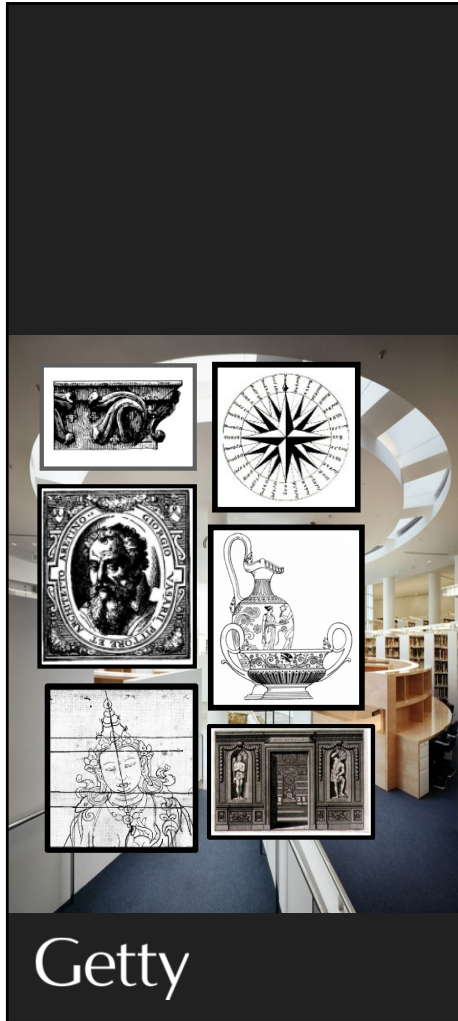
Enabling digital art history



- **AAT**, the *Art & Architecture Thesaurus*® includes generic terms, relationships, sources, and notes for work types, roles, materials, styles, cultures, and techniques (e.g., *amphora*, *oil paint*, *olieverf*, *peintures à l'huile*, *acetolysis*, 玉器, *Jadekünste*, *sintering*, *orthographic drawings*, *Olmeca*, *Rinascimento*, *Buddhism*, *watercolors*, *asa-no-ha-toji*)
- **TGN**, the *Getty Thesaurus of Geographic Names*® includes names, relationships, and coordinates for current and historical cities, nations, empires, archaeological sites, lost settlements, and physical features; through LOD, TGN may be linked to GIS and maps (e.g., *Diospolis*, *Acalán*, *Ottoman Empire*, *Mogao*, *Ch'ien-fu-tung*, *Ganges River*, गंगा नदी)
- **ULAN**, the *Union List of Artist Names*® includes names, relationships, notes, sources, and biographical information for artists, architects, firms, studios, repositories, patrons, sitters, and other individuals and corporate bodies, both named and anonymous (e.g., *Mark Rothko*, *Cai Xiang*, 葵囊, *Crevole Master*, *Riza Abbasi*, *Altobelli & Molins*, *Rajaraja Museum*)
- **IA**, the *Getty Iconography Authority*™ includes proper names, relationships, and dates for iconographical narratives, religious or fictional characters, historical events, names of literary works and performing art (e.g., *Adoration of the Magi*, *Viaggio dei Re Magi*, *Flood of Deucalion*, *French Revolution*, *Olouaipipilele*, *Xibalba*, *Niflheim*, िशव, *Shiva*, *Bouddha couché*)
- **CONA**, the *Cultural Objects Name Authority*® includes titles, artist attribution, creation dates, relationships, and location for works of art, architecture, and other cultural works, whether extant or destroyed (e.g., *The Lacemaker*, *La Dentellière*, *Merlettaia*, *Lion Throne Room*, 神奈川冲浪, *Great Wave*, *Die große Welle*, *Chayasomesvara Temple*, *Hagia Sofia*, Αγία Σοφία)

Getty

Abridged Overview of Getty Vocabularies



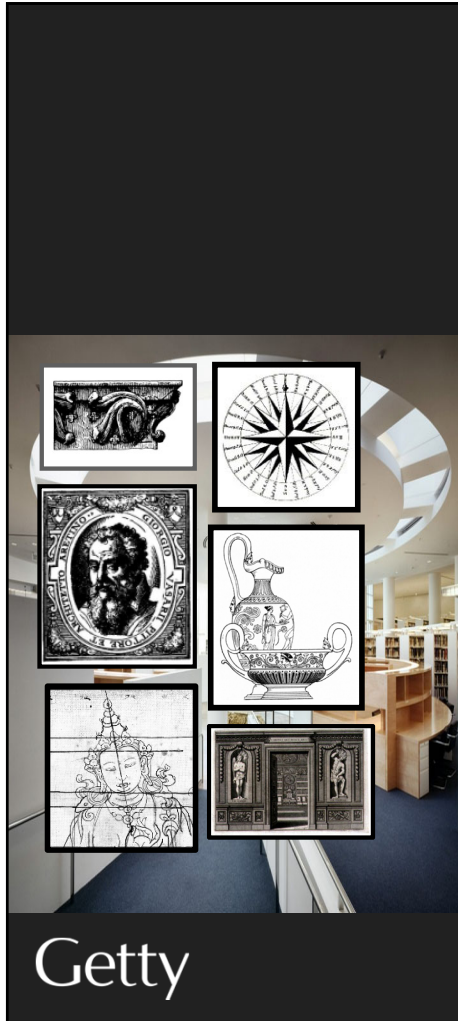
What Are Controlled Vocabularies?

- A controlled vocabulary is an organized arrangement of words and phrases
- Typically includes preferred and variant terms
- Has a defined scope or describes a specific domain

Purpose of Controlled Vocabularies

- To provide terminology to catalog, document, retrieve, categorize, and discover information
- To capture the richness of variant terms
- For some users, to promote consistency in assignment of terms
- In retrieval and discovery, to utilize variant terms and broader/narrower contexts as **structured vocabularies**

[Abridged Overview of Getty Vocabularies](#)



What Are the Getty Vocabularies?

- **Structured vocabularies**
- **Relationships**: Thesauri, 3 relationships: equivalence (synonyms), hierarchical (broader-narrower), associative (btwn records, not hierarchical)
- **Standards-compliant**: Comply with standards for controlled vocabularies (ISO, NISO)
- **Authoritative**: Vocabularies cite authoritative sources and contributors; but not authoritarian (may use variant terms)
- **Scope**: Getty Vocabularies strive to be ever more multilingual, multicultural, and inclusive → ***contributions***
- **Audience**: Traditional audience (art and architecture domains: visual resources, catalogers, museums), plus scholars, and related disciplines (archaeology, conservation)
- **Collaborative**: Grow through contributions from expert user community: institutions, consortia, and projects

Abridged Overview of Getty Vocabularies

Contributors to Vocabularies

Who are the contributors?

- Getty projects
- 300 institutions, consortia, research projects

How is the data generated?

- Contrib. may research and create original data for the purpose of contribution
E.g., translations: Spanish, Dutch, Chinese, German, French, Croatian, Portuguese, Japanese
- Or may map data already collected in the course of their own work
E.g., repositories and documentation projects, research projects
- Contributions = 10s of thousands per year

Getty

Provenance Index GRI Photo Archive GCI
GRI Special Collections GRI Library JPGM

Getty

Netherlands Institute for Art History (RKD)
Academia Sinica of Taiwan
Canadian Heritage Information Network
Avery Architectural & Fine Arts Library
Staatliche Museen zu Berlin Preussischer Kulturbesitz
Ctro. de Documentación de Bienes Patrimoniales, Santiago
Istituto Centrale per il Catalogo e la Documentazione, Rome
Courtauld Institute

National
documentation
agencies,
consortia

Canadian Centre for Architecture (CCA)
Frick Art Reference Library
Indiana University Digital Collections
Harry Ransom Center, University of Texas at Austin
Bunting Visual Resources Library, U. of New Mexico
Pinacoteca do Estado de São Paulo

Image
collections,
libraries

Rijksmuseum in Amsterdam
Mystic Seaport Museum in Connecticut
Smithsonian National Museum of African Art
Grove Art online

Art repositories

Publishers

Florentine Codex Initiative (GRI)
Traditional Chinese Architecture (Vanderbilt, SEU)

Research projects

Abridged Overview of Getty Vocabularies

Getty Vocabularies Used in an Object Record

Catalog Level: item **Classification:** paintings

Work Type:

painting (visual work) [AAT 300033618]

scroll (information artifact) [AAT 300028629]

Title: Scene of Early Spring **Type:** repository **Lang.:** English

Title: 宋郭熙早春圖 軸 **Type:** repository **Lang.:** Chinese

Creator Display: Guo Xi, Song Dynasty

Index: Guo Xi (Chinese painter, 1023 - ca.1085 CE) [ULAN 500125758]

Role: artist

Creation Date: 1072 CE; fifth year of Xining, first era of the Shenzong Emperor, Northern Song Dynasty

Index: Start Date: 1072 **End Date:** 1072

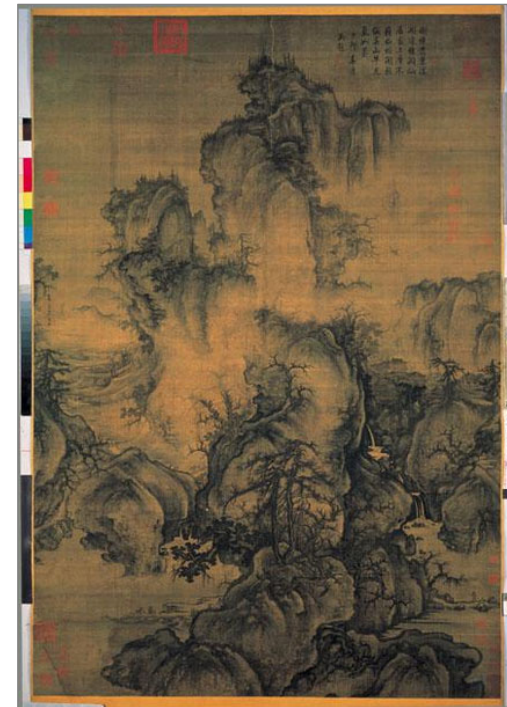
Materials Display: painted scroll

Index: color (pigment) [AAT 300264870]

Index: ink [AAT 300015012]

Index: silk (silkworm material) [AAT 300014072]

Index: paper (fiber product) [AAT 300014109]



<http://vocab.getty.edu/page/cona/700002851>

Getty

Abridged Overview of Getty Vocabularies

[continued] **Getty Vocabularies Used in an Object Record**

Dimensions: 158.3 x 108.1 cm

Index: Value: 158.3 **Unit:** cm **Type:** height

Index: Value: 108.1 **Unit:** cm **Type:** width **[TGN 1000959]**

Location: National Palace Museum (Taipei, Taibei, Taiwan)

[ULAN 500309392] **Type:** current

Repository No.: Meta Data identification: 000053N000000000

Credit Line: National Palace Museum

Inscription: On the right side, the painter wrote: "Early Spring. Painted by Guo Xi in the year of Ren-Zi (49th year of the Chinese sexagenary cycle, referring to 1072 AD)."; 畫幅右側畫家自題:「早春。壬子(1072)年郭熙畫。」顧名思義, 這幅畫作是在描寫瑞雪消融, 雲煙變幻, 大地復甦, 草木發枝, 一片欣欣向榮的早春景象

General Subject: landscapes

Specific Subjects: Renewal of Life [IA 901002238]

spring (season) [AAT 300133097] | shan shui [AAT 300387301]

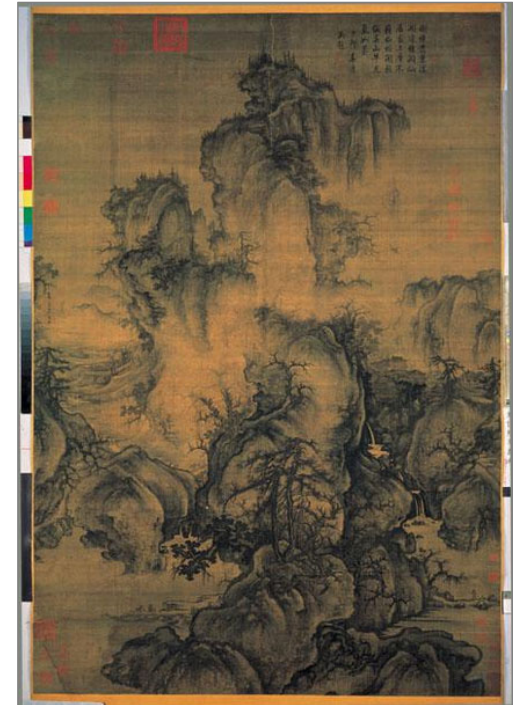
trees [AAT 300132410] | streams [AAT 300008699]

Pinus (genus) [AAT 300343658] | travel [AAT 300080094]

floating perspective [AAT 300438516] Extent: design element

Descriptive Note: "Early Spring" is here conceived of as a mist and forest filled mountain. The brushwork registers infinite variations of pressure and ink: the silhouette of the rocks and boulders are delineated with a heavy touch, the fog-washed trees with a light one....

Sources: National Palace Museum database (2008-); Yangqiu, Viewing Metaphor: Work of Early Spring (2010)



<http://vocab.getty.edu/page/cona/700002851>

Abridged Overview of Getty Vocabularies

amfoor
 amphorae
 arc-boutant
 brittleness
 Buddhism
 calligraphy
 emulsifier
 façades
 flying buttress
 飛扶壁
 lithographer
 litógrafos
 luchtbogen
 orthogonal plan
 Macedonian
 millwork
 Rinascimento
 ρυτόν
 stupa
 Sturzbecher
 travertine
 weft wrapping
 yastiks
 zeppelin
 Zigula
 zinc oxide



AAT, the Art & Architecture Thesaurus®

The AAT is a thesaurus containing generic terms, dates, relationships, sources, and notes for work types, roles, materials, styles, cultures, techniques, and other concepts related to art, architecture, conservation, other cultural heritage

- Generic terms, not proper names
oil paint, olieverf, acetolysis, sintering, orthographic drawings, Olmeca, Rinascimento, Buddhism, watercolors, asa-no-ha-toji, sralais
- AAT is multilingual; large translation projects are underway
- Conceptually organized from terms to describe abstract concepts to generic terms for concrete, physical artifacts
- Facets are the upper levels of the AAT structure
- AAT is not organized by subject matter or discipline

<i>Associated Concepts</i>	<i>Physical Attributes</i>	<i>Styles and Periods</i>	<i>Agents</i>	<i>Activities</i>	<i>Materials</i>	<i>Objects</i>	<i>Brand Names</i>
----------------------------	----------------------------	---------------------------	---------------	-------------------	------------------	----------------	--------------------

Abridged Overview of Getty Vocabularies



AAT, the Art & Architecture Thesaurus®

Sample record

ID: 300132869

Terms:

bobbin lace (pref, en)
 bone lace (en)
 cushion lace (en)
 梭心蕾絲 (zh)
 線軸編織花邊 (zh)
 kloskant (nl)
 dentelle aux fuseaux (fr)
 encaje de bolillos (es)
 encaje de bolillo (es)
 Klöppelspitze (de)
 Klöppelspitzen (de)

Associative Relationships

requires ... lace pillows (<textile fabricating tools and equipment>...Objects Facet) [300132869]

Hierarchical Relationships (poly)

.Objects Facet
 ... Visual & Verbal Communication
 Visual Works
 visual works (works)
 <visual works by material >
 needlework (visual works)
 lace (needlework)
 bobbin lace

Note: With "needle lace," one of two primary types of handmade lace. It is characterized by being made by ...

Chinese (traditional) 與「針織蕾絲 (needle lace)」同為主要的手工蕾絲, 其特色是以纏繞於線軸或梭心...

Dutch Een van de twee belangrijkste soorten met de hand vervaardigde kant; 'naaldkant' is ...

German Zusammen mit der "Nadelspitze" eine der wichtigsten...

Spanish Junto a "encaje a aguja", uno de los dos tipos principales de ...

Contributors: VP,CHIN,AS,RKD,IfM-SMB-PK,CDPB-DIBAM

Sources: Earnshaw, Claburn, Needleworker's Dictionary (1976); Identification of Lace, 2d ed. (1984); Ginsburg, Illustrated History of Textiles (1991) Abridged Overview of Getty Vocabularies



Contributors are cited

AAT records are merged information from multiple contributors

Getty Vocabularies grow through contributions from the expert user community

All information in a Getty Vocabulary record is attributed to a contributor and cites the published sources

Getty

Patricia Harpring © 2019 J. Paul Getty Trust. For educational purposes only. Do not distribute.

bobbin lace ([preferred](#), [C,U,LC,English-P,D,U,PN](#))
bone lace ([C,U,English,UF,U,N](#))
cushion lace ([C,U,English,UF,U,N](#))
lace, bobbin ([C,U,English,UF,U,N](#))
pillow lace ([C,U,English,UF,U,N](#))
梭心蕾絲 ([C,U,Chinese \(traditional\)-P,D,U,U](#))
線軸編織花邊 ([C,U,Chinese \(traditional\),UF,U,U](#))
骨架花邊 ([C,U,Chinese \(traditional\),UF,U,U](#))
枕墊花邊 ([C,U,Chinese \(traditional\),UF,U,U](#))
suō xīn lěi sī ([C,U,Chinese \(transliterated Hanyu\)](#))
suo xin lei si ([C,U,Chinese \(transliterated Pinyin\)](#))
so hsin lei ssu ([C,U,Chinese \(transliterated Wade\)](#))
kloskant ([C,U,Dutch-P,D,U,U](#))
dentelle aux fuseaux ([C,U,French-P,D,U,PN](#))
merletto a tombolo ([C,U,Italian-P,D,U,PN](#))
encaje de bolillos ([C,U,Spanish-P,D,U,PN](#))
encaje de bolillo ([C,U,Spanish,AD,U,SN](#))
Klöppelspitze ([C,U,German,AD,U,SN](#))
Klöppelspitzen ([C,U,German-P,D,U,PN](#))

- **Getty Conservation Institute** (Los Angeles, California)
- **Academia Sinica** (Nankang, Taiwan)
- **Netherlands Institute for Art History** (RKD: Bureau AAT) (The Hague, The Netherlands)
- **Centro de Documentación de Bienes Patrimoniales** (Dirección de Bibliotecas, Archivos y Museos) (Santiago, Chile)
- **Staatliche Museen zu Berlin Preussischer Kulturbesitz** (Berlin, Germany)
- *[Canadian Heritage Information Network (CHIN) (Gatineau, Quebec, Canada), Istituto Centrale per il Catalogo e la Documentazione (Rome, Italy)(ICCD)] and other contributors of partial translations; future translations in French, Italian, Portuguese, other languages*

Abridged Overview of Getty Vocabularies

Thesaural structure

- ▲ Top of the AAT hierarchies
- ▲ Objects Facet
- ▲ Visual and Verbal Communication (hierarchy name)
- ▲ Visual Works (hierarchy name)
- ▲ visual works (works)
- ▲ <visual works by material or technique>
- ▲ photographs
- ▲ <photographs by form>
- ➔ <photographs by form: format>
- ▲ card photographs (photographs)
- boudoir midget mounts
- boudoir photographs
- cabinet photographs
- ▲ **cartes-de-visite (card photographs)**
- imperial photographs
- panel photographs
- promenade photographs
- victoria cards (photographs)
- gem photographs
- lantern slides

- Sub-facets (called "hierarchies") establish the context of the term
- Guide terms in angled brackets

Work type: carte-de-visite

CONA
 Titles:
 Author:
 Creation Date: 1890
 Description:
 Albumen
 O. Sch
 Work
 Genera
 Key
 Form
 Still
 Cov
 Cair
 ID//
 200
 Is P
 Ken
 See
 Coll
 Use
 Digi
 Pers
 http



ed 105 mm. x 63 mm. Positive Process:
 on verso, stating he is the successor to
 o on verso.

tion

be suitable for most purposes.



Abridged Overview of Getty Vocabularies

Thesaural structure

- Indexers may choose the term that best describes the work
- The concept and each term are identified by unique numeric IDs
- e.g., singular for a single item, language
- Some systems or local cataloging rules do not allow linking at the term level

AAT subject_id 300127141

Work type: carte-de-visite

- cartes-de-visite (card photographs) (preferred,C,U,English-P,D,U,PN)
- (fotografische kaarten) (Dutch-P,D,U,PN)
- (photographies) (French-P,D,U,PN)
- carte-de-visite (card photograph) (C,U,English,AD,U,SN)**
- (Dutch,AD,U,U)
- cartes de visite (card photographs) (C,U,English,UF,U,N)
- card photographs (cartes-de-visite) (C,U,English,UF,U,N)
- carte-de-visite photographs (C,U,LC,English,UF,U,N)
- cartes de visite photographs (C,U,English,UF,U,N)
- sure cards (C,U,English,UF,U,N)
- Visitenkartenporträts (fotografische Abzüge) (C,U,German-P,D,U,PN)
- Visitenkartenporträt (fotografischer Abzug) (C,U,German-P,D,U,PN)
- tarjetas de visita (obra visual) (C,U,Spanish-P,D,U,PN)
- tarjeta de visita (obra visual) (C,U,Spanish,AD,U,SN)

- term_id 1000127141
- term_id 1000299275
- term_id 1000271610
- term_id 1000271607
- term_id 1000271609
- term_id 1000271613
- term_id 1000606079
- term_id 1000606080
- term_id 1000438273
- term_id 1000438274



Printed 105 mm. x 63 mm. Positive Process:
 slit on verso, stating he is the successor to
 go on verso.

Collection

id be suitable for most purposes.



Achilles Painter
Abasi, Riza
رضا عباسي
An Qi
安岐
Bartolo di Fredi
Galleria degli Uffizi
Gilbert & George
Katsushika Hokusai
Kicking Bear
Master of Boi
Méraud, Pierre-Antoine,
père
Ngapatari, Hakaraia
O'Keeffe, Georgia
Pei, I. M.
Rothko, Mark
Sa'īd, Mahmūd
Skidmore, Owings &
Merrill
unknown Mende
Vikramaditya I
Wren, Christopher
Zeuxiades
Ζευξιάδης



ULAN, the Union List of Artist Names®

ULAN contains names, relationships, notes, sources, and biographical information for artists, architects, firms, studios, repositories, patrons, sitters, and other individuals and corporate bodies, both named and anonymous

- Named people and corporate bodies
Bartolo di Fredi, Xueshi Bai, 白雪石, National Palace Museum (Taipei)
- Anonymous creators known by appellation: *Santa Eufemia Master*
- Scope also includes “Non-Artists” (e.g., sitters and patrons)
- “Unknown People by Culture” (e.g., *unknown Aztec*)
- “Unidentified Named People” (e.g., known from archival documents)

- ULAN includes current and historical associative relationships (e.g., students to teachers; firm and studios to members)
- Contributions to ULAN are from experts at authorized institutions (e.g., museums, special collections, art libraries, cataloging projects, bibliographic projects, etc.)

Abridged Overview of Getty Vocabularies



ULAN, the Union List of Artist Names®

Sample record

ID: 500060426

Names:

Hokusai, Katsushika
 (pref,en,ja-trans,de)
 Katsushika Hokusai (en,ja-trans)
 Hokusai (en,ja-trans)
 葛飾 北斎 (ja)
 Shunrō (en,ja-trans)
 Tawaraya Sōri (en,ja-trans)
 Kakō (en,ja-trans)
 Tatsumasa (en,ja-trans)
 Gakyōjin (en,ja-trans)
 Taito (en,ja-trans)
 lichi (en,ja-trans)
 Manji (en,ja-trans)
 Tokitarō (en,ja-trans)
 時太郎 (ja)
 葛飾北斎 (ja)

Nationalities:

Japanese (pref)

Roles:

AAT

artist
 printmaker
 painter
 designer
 calligrapher
 draftsman
 landscapist
 marine artist
 figure artist
 ukiyo-e artist

Gender: male

Birth and Death Places:

Born: Tokyo (Kanto, Japan)) (inhab place)

Died: Tokyo (Kanto, Japan)) (inhab place)

AAT

TGN

Events:

active: Tokyo (Kanto, Japan)) (inhab place)
 in Edo, modern-day Tokyo

Associative Relationships:

teacher of Taito, Katsushika, II
(Japanese printmaker, active ca. 1820-1850)
 child of Nakajima Ise
(Japanese mirror maker, 18th century)
 possibly identified with ... Tōshūsai Sharaku
 (Japanese printmaker, active 1794-1795)

Contributors:

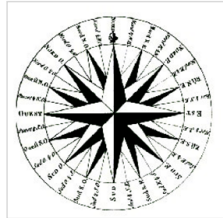
VP,Avery,GRL,BHA,CCA

Sources: Bowie, Drawings of Hokusai (1964);
 Grove Dictionary of Art online (1999-2002); Library
 of Congress Authorities database (n.d.);
 Metropolitan Museum of Art [online] (2003-);
 Bouquillard, Hokusai: First Manga Master (2007)

Abridged Overview of Getty Vocabularies

Getty

Abthugni
Angel Falls
Athínai
Αθήναι
Bhārat
Býcǐ Skála
Bora-Bora
Casablanca
Chichén Itzá
Cueva Cerro Sota
Donner Pass
Dos Cabezas Site
Firenze
Fort Rouillé
Gdansk
Genna Bogai, Arcu
Святой Престол
Jabal Mayyah
Kush
Luxor
מִשְׁרָאֵל
Mare Cantabricum
Nan Madol Ruins
Rapa Nui
臺北



TGN, the Getty Thesaurus of Geographic Names®

TGN focuses on places relevant to art, architecture, and related disciplines, recording names, relationships, place types, dates, notes, and coordinates for current and historical cities, nations, empires, archaeological sites, lost settlements, and physical features

- Places relevant to art history
Thebes, Diospolis, Ottoman Empire, Mogao Caves, Ch'ien-fu-tung, Ganges
- TGN is a structured vocabulary
- TGN is a thesaurus compliant with ISO standards
- Focus on historical regions, archaeological sites, lost settlements, built upon a skeleton of the modern world from NGA/NIMA and USGS data sets
- TGN is not GIS, is a thesaurus focused on names and links. Why invent the wheel over again? Many sources of geographic data exist. However, TGN may be linked to GIS, maps, and other geographic resources

[Abridged Overview of Getty Vocabularies](#)



TGN, the Getty Thesaurus of Geographic Names®

Sample record

[Linked to other vocabularies](#)

ID: 7011179

Names:

Siena
(it,en,es,fr,nl,de)
Σιένα (el)
Siyenah
锡耶纳 (zh)
シエーナ (ja)
Sienese (en-adj)
Sienna (h-en)
Sena Julia (h-la)
Sanna (h)
Saena (h)

Hierarchical Rels. (polyhier.)

World (facet)
.. Europe (continent)
... Italy (nation)
.... Tuscany (region)
..... Siena (province)
..... Siena (inhabited place)

World (facet)
.. Europe (continent)
... Italian Peninsula (peninsula)
.... Etruria (former confederation)
..... Siena (inhabited place)
Historical: Late Etruscan

Associative Rels

ally of Pisa ..(inhabited place) [7006082]
Ghibelline allies, 13th-14th centuries

Contributors: BHA, FDA, GRLPSC, VP

Sources: *Annuario Generale* (1980); *Canby, Historic Places* (2007) 2/861; *Dizionario Corografico Toscana* (1977) 1508; *Library of Congress Subject Headings* (2002-); *Milanesi, Storia dell'Arte Senese* (1969) *passim*; *NGA/NIMA database* (2003-) -129709; *TCI: Toscana* (1984) 479 ff; *Times Atlas of the World* (1992) 183; *UNESCO World Heritage Centre [online]* (1992-) accessed 20 July 2010; *Webster's Geographical Dictionary* (2007) 1114

Place Types

inhabited place settled by Etruscans
(flourished by 6th century BCE)

city
archiepiscopal see
commune (administrative) since 1125
cultural center
university center
world heritage site

Lat: 43 19 07 N (43.3180)
Long: 011 19 50 E (11.3300)
Elevation: 1056.430 feet (322.0000 meters)

Note: Siena was founded as an Etruscan hill town; later was the Roman city of Sena Julia (3rd century BCE). It flourished under the Lombard kings (6th century CE) and was Medieval self-governing commune ...

AAT

Getty

[Abridged Overview of Getty Vocabularies](#)

Adorazione dei Magi
Apedemak
Baby Jaguar
Death and the Miser
Ehecatl
Ganesh
Hades
Hercules
Herakles
Mithras
Niflheim
Noli me tangere
Olouaipilele
Prajnaparamita
Penance of Indra
Reclining Buddha
Bouddha couché
涅槃仏
Storming the Bastille
The Divine Comedy
Tumatauenga
Virgin Hodegetria
World War I
Xibalba

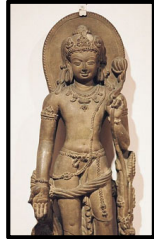


IA, the Getty Iconography Authority™

IA is a thesaurus that covers topics relevant to art, architecture, and related disciplines; includes multilingual proper names, relationships, and dates for iconographical narratives, religious or fictional characters, themes, historical events, and named literary works and performing arts

- Includes the proper names of subjects not covered by other Getty Vocabularies
- Scope is multicultural and multilingual, grows through contributions
- Includes links to other sources where there is overlap, such as Iconclass and US Library of Congress subject authorities
- The IA is compliant with the Subject Authority of CDWA and CCO (*Categories for the description of Works of Art and Cataloging Cultural Objects*)
- The IA has a thesaural structure; it includes equivalence, associative, and hierarchical relationships
- The IA is linked to the other Getty Vocabularies

[Abridged Overview of Getty Vocabularies](#)



IA, the Getty Iconography Authority™

Sample record

Names in multiple languages

Users may choose the name appropriate for their needs

Getty

ID: 1000085

Names:

Avalokiteshvara

Avalokiteśvara

अवलोकितेश्वर

ཡུན་རས་གཟིགས་

Spyan ras gzigs

AAT links

role/characteristic is ... bodhisattva

symbolic attribute is ... lotus

culture/religion is ... Mahayana (Buddhism)

culture/religion is ... Theravada (Buddhism)

AAT
TGN
ULAN
CONA

Associative Relationships

associated with Krishna (Hindu iconography)

counterpart is Guanyin (Buddhist iconography)

Note The bodhisattva of infinite compassion and mercy; embodies the compassion of all Buddhas. This bodhisattva is portrayed in different cultures as either female or male...

Hierarchical Relationships

Top of the IA hierarchies

Legend, Religion, Mythology

Buddhist iconography

Buddhist characters

Avalokiteshvara (Buddhist iconography)

Contributors & sources

[VP] Encyclopedia Britannica Online

(2002-); Bowker, Oxford Dictionary

of World Religions (1997);

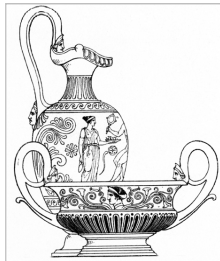
Huntington, Art of Ancient India

(1985); **LC:** LC control no.: sh

85010492

Abridged Overview of Getty Vocabularies

Bhimesvara Temple
Bradshaw rock
paintings
Case Study House 21
Château de Versailles
Empire State Building
En liberté comme toi
Himeji Castle
姫路城
Irises
Kashmir Gate
Mona Lisa
La Gioconda
Model for the Façade
of San Lorenzo
MS Ludwig XV
Pantheon
Portrait of Napoleon
Ronda di notte
Square Ting Vessel
of Duke Kang
西周早期 康侯方鼎



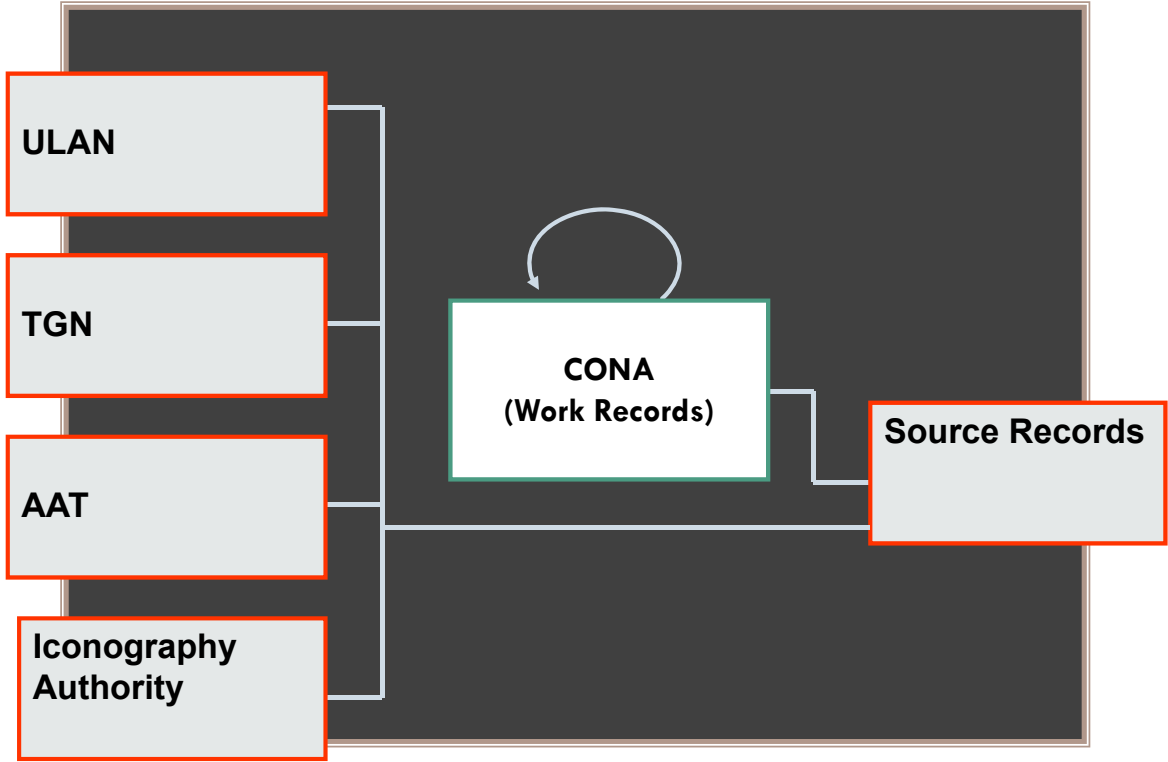
CONA, the Cultural Objects Name Authority®

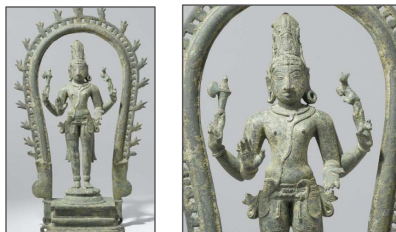
CONA compiles titles/names and other metadata for works of art, architecture, and other cultural works, current and historical, documented as items or in groups, whether works are extant, destroyed, or never built

- In development, may be used to record works depicted in visual surrogates and for other purposes
- CONA compiles titles, attributions, depicted subjects, and other metadata about works of art, architecture, and cultural heritage, both extant and historical works, works never built, disassembled works, conceptual works for multiples
Hagia Sophia, Mona Lisa, Thirty-six Views of Mount Fuji, 富嶽三十六景
- Scope is multicultural and multilingual; grows through contributions
- CONA is linked to images; CONA is linked to the AAT, TGN, ULAN, and IA
- Through this rich metadata and links, CONA may provide a powerful conduit for research and discovery for digital art history

[Abridged Overview of Getty Vocabularies](#)

The Simplified entity-relationship diagram for CONA is the same as CDWA / CCO





CONA, the Cultural Objects Name Authority®

Sample record

ID: 700001950

Titles:

Shiva met de maan in het haar (nl)
Shiva with the Moon in his Hair (en)

Catalog Level: item

Work Types:

sculpture (visual work) **AAT**

Classifications:

sculpture (preferred)

Creation Date: 1000/1200

Creator Display:

anoniem
sculptor: unknown Chola **ULAN**

Locations: **ULAN** **TGN**

Current: Rijksmuseum (Amsterdam, North Holland, Netherlands) AK-MAK-1291; RM001.collect.910; Bruikleen van de Vereniging van Vrienden der Aziatische Kunst

Creation: Tamil Nādu (India)

Materials: bronze founding **AAT**

Dimensions: 40 cm (height) x 24cm (width) x 10.5 (depth)

Events: exhibition: Metamorfoze/Geheugenproject Willem Witsen **AAT**

Cultures:

Indian Chola **AAT**

General Subject:

human figure(s) (preferred)
religion and mythology

Specific Subjects:

Shivá (Hindu iconography)
mudrā (pose, <visual and representational concepts>)
[\[link to Iconclass\]](#)

AAT
TGN
ULAN
CONA
CONA IA

Contributors & Sources: [Rijksmuseum;VP]; Rijksmuseum XML file Abridged Overview of Getty Vocabularies



CONA, the Cultural Objects Name Authority®

Sample record

ID: 700000141

Titles/Names:

Hagia Sophia
(en,de,nl)
Ayasofya (tr)
Αγία Σοφία (el)
Agia Sofia
Haghia Sophia
Sainte-Sophie (fr)
Santa Sofía (es)
Santa Sofia (it)
Sancta Sophia (la)
Sancta Sapientia (la)
Holy Wisdom (en)
Saint Sophia (en)
聖蘇菲亞大教堂 (zh)

Work Types: church; mosque;
museum

AAT

Date: original structure dated
from 4th century CE; present
structure built 532-537 CE; rebuilt
in 12th century

ULAN

Creators: Anthemios of Tralles
(Byzantine architect, ca. 474-ca.
534) and Isidoros of Meletus, the
Elder (Byzantine architect, active
mid-6th century);
Patron: Justinian I (Byzantine
emperor, ca. 482-565)

Built Work
... Hagia Sophia
Associative Relationship
depicted in *View of the Hagia
Sophia in Constantinople*; Eduard
Hildebrandt; watercolor; ca. 1852;
Hermitage Museum (Saint
Petersburg, Russia) [700008345]

Location: Istanbul (Marmara, Turkey)
Address Note: 41.008548°N; 28.979938°E

TGN

Materials: system bearing masonry,
centralized plan; interior surfaces are
sheathed with polychrome marble,
porphyry, and mosaics
Dimensions: central dome: diameter 31 m
(102 feet); height 56 m (184 feet)

AAT

General Subject: architecture
Specific Subject: Holy Wisdom
Religion/Mythology

AAT
TGN
ULAN
CONA
CONA IA

Note: Domed basilica was cor
by the Emperor Justinian; built in
Constantinople in 6th century...

Contributors: Avery, BHA, FDA, VP
Sources: *Fleming, Penguin Dictionary of
Architecture* (1999); *Herrin, Judith,
Byzantium* (2007); *Maidstone, Hagia Sophia*
(2002); *Theoharidou, Architecture of Hagia
Sophia* (1988); *Xydis, Chancel Barrier of
Hagia Sophia* (1947)

Abridged Overview of Getty Vocabularies

Getty

Possible implementations of CONA

Movable works linked to architecture depicted

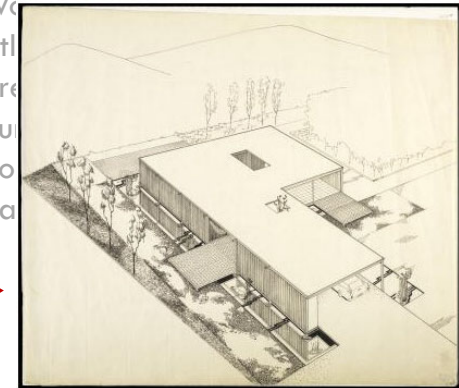


CONA ID 700000090 Class. architecture
Work Type: house
Title: Case Study House No. 21
Title: Bailey House Title: CSH #21
Creator: architect: Pierre Koenig
Creation Date: 1956-1958; renovated 1998
Dimensions: 1 story, 1320 square feet, 4 rooms and 2 baths, on a 110 x 160 foot lot
Mat & Tech: steel frame and flat roof deck
Current Location: Los Angeles (California, USA)
Address Note: 34.116634 -118.391623; 038 Wonderland Park Avenue, Hollywood Hills, Los Angeles, 90046

LINKS

preparatory for based on

CONA ID 700000120



depicts depicted in

CONA ID 700008539 Work Type:



Abridged Overview of Getty Vocabularies

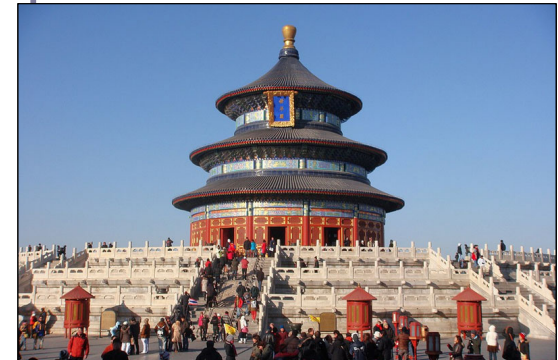
Possible implementations of CONA

Works linked to outside resources

Merging information from multiple contributors

CONA ID: [700002923](#)
Catalog Level [item](#) **Classification** [architecture](#)
Work Type [building complex](#) | [temple](#)
Title/Name [Temple of Heaven \(en\)](#)
[Tian Tan \(zh-tr\)](#) | [T'ien-t'an \(zh-tr\)](#) | [天坛 \(zh\)](#)
| [天壇 \(zh\)](#) | [천단 \(ko\)](#)
Creator [display] first built by Ming Chengzu (1360-1424); extended by Ming Shizong (1507-1567); renovated by Qianlong (1711-1799)
Creation Date [display]: 1530, during Ming dynasty
General Subject [architecture](#) **Type:** [isness](#)
Specific [Earth](#) [[TGN 7030638](#)] **Extent:** [dedication](#)
Current Location [Beijing \(Beijing Shi \(municipality\), China\) \(nation\)](#) **Address Note:** [39°57'05"N 116°24'36"E](#)
Dimensions [display] entire complex: 237 hecatres
Mat & Tech [display] [wood and stone](#) [[wood AAT 300011914](#) | [stone AAT 300011176](#)]
Style: [Chinese](#) [[AAT 300018322](#)] | [Taoist](#) [[AAT 30014366](#)]
Contributors [JPGM](#) [VP](#) [GRISC](#) [BWR](#)
Sources [Built Works Registry BWR3792244](#); [Library of Congress Authorities online \(2002-\)](#) [n2011019454](#); [Fodor's Travel \(2016\)](#); [J. Paul Getty Museum, collections online \(2000-\)](#); [Great Buildings Online \(1997-\)](#)

- CONA ID uniquely identifies the work in CONA
- Links to other IDs, such as LOC, VIAF, BWR



LINKS

Getty

Abridged Overview of Getty Vocabularies

Possible implementations of CONA

Multiple opinions are accommodated

CONA ID: [700000178](#)
Catalog Level item
Classification paintings
Work Type panel painting | altarpiece
Title Adoration of the Magi
[Adorazione dei Magi \(repository title\)](#)
Creator Bartolo di Fredi (Sienese painter, active by 1353, died 1410)
Creation Date [display]
1380s/1390s; some scholars date it ca. 1400 or later execution **Start Date 1380 End Date 1399**
alternative date **Start Date 1395 End Date 1409**
General Subject religion and mythology | human figures
Specific | Adoration of the Magi **Extent:** foreground | Siena | horses | Holy Family | gold | frankincense | myrrh | Journey of the Magi **Extent:** background | king | deity | death | Epiphany | Three Ages of Man
Current Location Pinacoteca Nazionale di Siena (Siena, Italy);
Repository No [no. 104](#)
Dimensions 195 x 158 cm (76 x 61 5/8 inches)
Mat & Tech tempera on panel
Contributors [BHA](#) [VP](#) [CD](#) [PNS](#) [GRI-PA](#) **LINKS**
Sources Pinacoteca Nazionale di Siena (2002-); Boucher and Fiorini, Magi Reconstructed (2012); Cole, Sienese Painting (1985); Freuler, Bartolo di Fredi (1994); Harpring, Bartolo di Fredi (1992)

- Opinions vary, all may be included in the CONA record



Abridged Overview of Getty Vocabularies

Possible implementations of CONA

LINKS

IA ID 1000045

Names

- Xibalba
- Place of Fear

AAT ID 300191778

Terms

- skeleton [English]
- beendergestel [Dutch]
- esqueleto [Spanish]
- squelette [Italian]
- 骨架 [Chinese]

Getty

Works linked to subjects depicted

Value added: Contributions to CONA may be indexed for subject depicted access

OCLC survey, of core fields missing is subject depicted

Mining titles and text for subjects depicted, missing from museum data

Controlled by AAT, ULAN, TGN, CONA, and IA

CONA ID 7000012 Class: Pre-Colombian art

General Subject:

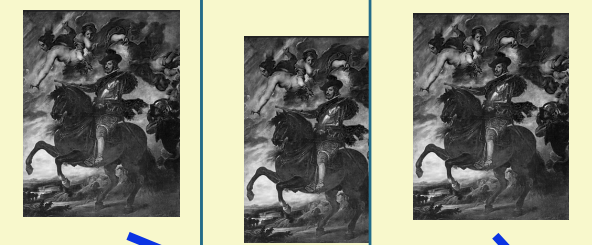
- religion and mythology [General Subject ID 31801]

Specific Subjects:

- Xibalba (Maya underworld) [IA 1000045]
- Baby Jaguar (Maya character) [IA 901002211]
- Chahk (Maya deity) [IA 901002210]
- man (male human) [AAT 300025928]
- skeleton (animal component) [AAT 300191778]
- ax (weapon) [AAT 300024664]
- altar [AAT 300003725]
- death [AAT 300151836]
- celebration [AAT 300152441]



Abridged Overview of Getty Vocabularies



CC
surrog

Titles: Equestrian Portrait of Philip IV

Work T

Creatio

Creator

1577-1

[50000

Locatio

Repositor

Display Ma

Dimensions:

General Su

Specific Su

E

copy after

List/Hierar

..... Visual S

..... Stud

Sources and

[VP]

GRI Photo

Getty

Works depicted in visual surrogates

- What is advantage to linking to CONA for work depicted?
- Access for all surrogates for same work
- Multilingual access, links, etc.

Velázquez et al copy in the Uffizi after Ruben

CONA_ID: 700008694 Class.: paintings

Titles: Equestrian Portrait of Philip IV
Filippo IV, re di Spagna
Felipe IV a caballo

Work Types: painting (visual work) **AAT**

Creation Date: ca. 1645

Creator Display: Diego Velázquez and assistants; after Peter Paul Rubens, now lost

Locations: Galleria degli Uffizi (Florence province, Tuscany, Italy) [500125191] **ULAN**

Repository Numbers: 1890:792 **ULAN** **TGN**

Address Note: Room 41: Ruben **ULAN**

Display Materials: oil on canvas **AAT**

Dimensions: 338 x 267 cm

General Subject: portraits

Specific Subjects:

- equestrian portrait [300403976] (AAT) **AAT**
- Philip IV, King of Spain (Spanish king, 1605-1665) [500282775] (ULAN) **ULAN**

Related Works:

- pastiche copy after Equestrian Portrait of Philip IV [700008695] painting (visual work); Peter Paul Rubens; now lost; 1628-1629

Sources and Contributors:

- [VP] [GRIPA] **CONA**
- Fossi, Uffizi Gallery (2001)
- GRI Photo Archives database (1974-)

Abridged Overview of Getty Vocabularies

LINKS

specific subject

Enough information in surrogate records to make minimal record for work depicted

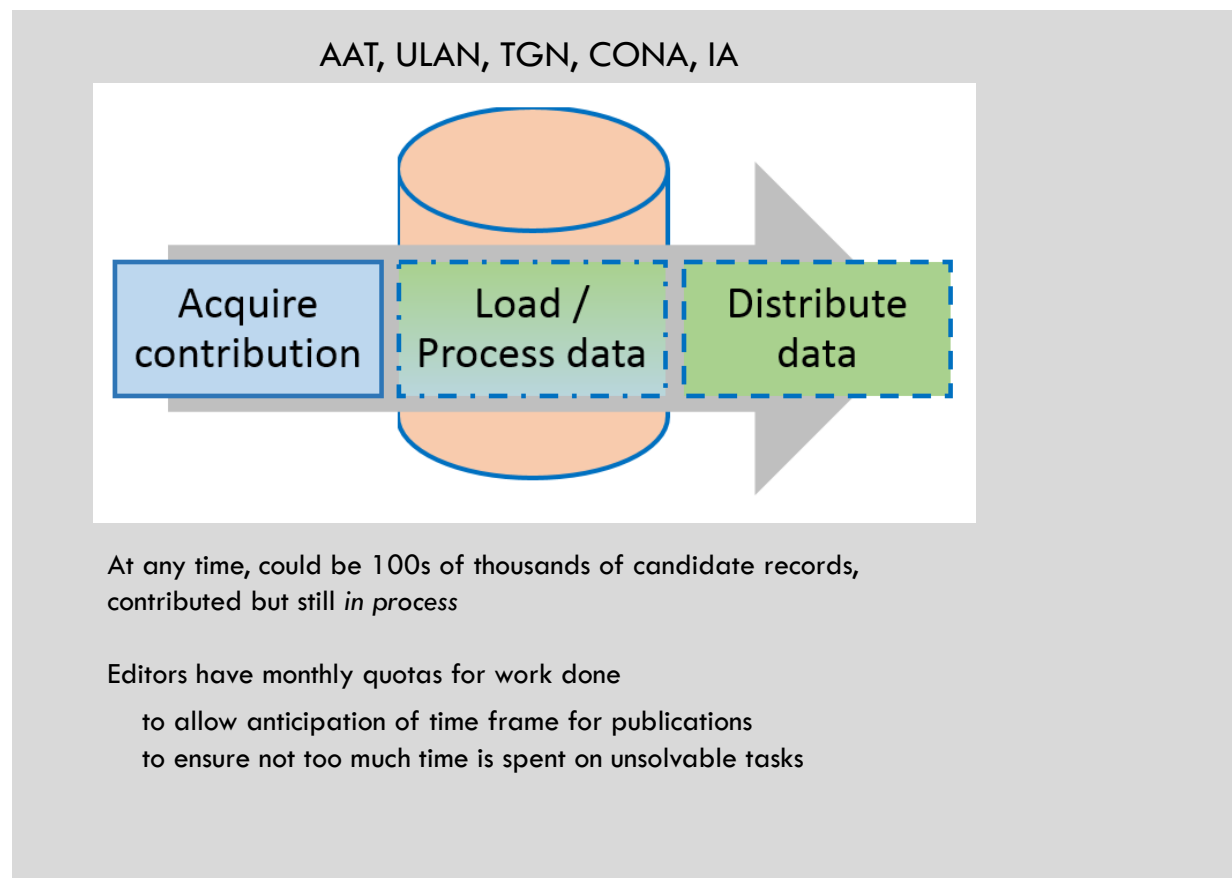
What Do We Do?

Discover, link, access, retrieve, research, catalogue, index

Getty

Processing records

- Contributors' data is loaded and processed by the Getty Digital team and the Getty Vocabulary Program
- Data is merged, normalized, and published
- Exported data is refreshed for users every month
- Releases: Online search, Web services APIs, LOD, XML, and relational tables



Getty

Abridged Overview of Getty Vocabularies

What do we do?

Coordinating contributions

- Nurturing relationships with contributors
- Advising re. mapping their existing data to format for loading into our editorial system
E.g., Szeemann finding aids to ULAN
- Advising re. translation methodology and content issues
- Meetings and online conversations

Getty

The **International Terminology Working Group (ITWG)**—a collective of metadata and controlled vocabulary professionals and scholars from North and South America, Europe, Asia, and the Middle East—meet every year or so to discuss four AAT translation Projects (including the Dutch AAT), as well as new projects, the other vocabularies, and overall the challenges and opportunities in developing and maintaining multilingual electronic thesauri for use by cultural heritage institutions. Getty Center, February 2020.



Abridged Overview of Getty Vocabularies

Relationships and linking are built into and among the Getty vocabularies



Merging data in one record

- Getty vocabularies merge contributed records representing the same concept
- Example from ULAN: Three contributions; are any of these records for the same person?
Yes, 1st and 3rd rows
- Merged by algorithm, if possible; if not, merged by editors

ULAN ID	Matching name	Display biography	Roles (AAT-controlled)	Nationality (AAT-controlled)	Estimated birth date	Estimated death date
500017409	Guardi, Francesco	Venetian painter, 1712-1793	artist painter landscapist	Venetian Italian	1712	1793
500312969	Guardi, Francesco	Italian noble, born 1514	<u>noble</u>	Italian	<u>1514</u>	<u>1614</u>
500412666	Guardi, Francesco	Italian artist, ca. 1712-1793	artist	Italian	1707	1793

Publishing data

- Contributors' data is loaded and processed by the Getty Digital technical team and the Vocabulary Program editorial team
- Data is merged, normalized, and published
- Refreshed for users every two weeks
- Releases: Online search, XML, relational tables, APIs, LOD

Getty A name matches exactly; role matches; a nationality matches; dates within range?

Abridged Overview of Getty Vocabularies

ULAN record is a merged, homogenous entity




Union List of Artist Names® Online
Full Record Display


[New Search](#)

[Previous Page](#)

[Help](#)

Click the  icon to view the hierarchy.

[Semantic View \(JSON, JSONLD, RDF, N3/Turtle, N-Triples\)](#) [Represent](#)

 **Guardi, Francesco** (Italian painter, 1712-179

Note: Venetian painter, during the first half of his life on decorations and church paintings; later became vedutista (view painter) of Venetian urban life.

Names:

- Guardi, Francesco** ([preferred](#), [V](#), [index](#), [LC](#))
- Francesco Guardi** ([V](#), [display](#))
- Gardi, Francesco** ([V](#))
- Garde, Francesco** ([V](#))
- Gardis, Francesco** ([V](#))
- Gauda, Francesco** ([V](#))
- Guada, Francesco** ([V](#))
- Guarde, Francesco** ([V](#))
- Guardet, Francesco** ([V](#))
- Gvardi, Franchesko** ([V](#))
- Guardi, François** ([V](#))
- Guardi, Francisco** ([V](#))

Contributors

AVERY, BHA, GRISC, GRL, GRLPA, PROV, VP, WCI, WCP, WL-Courtauld

Sources

- Avery Authority files (1963-)
- Harald Szeemann papers, Finding Aid, GRI Special Collections (2011-)
- J. Paul Getty Museum, collections online (2000-)
- Library of Congress Authorities database (n.d.) [n 50074509](#)
- M. Knoedler & Co. records, Finding Aid, GRI Special Collections (2012-)
- Provenance Index Databases, Authority file (1985-)
- RILA/BHA (1975-2000)
- Witt Library, Authority files



Merged in one record

Attribution to contributor and source is maintained, but merged and unified, and various "preferred" data is flagged

ULAN record is a merged, homogenous entity



Union List of Artist Names® Online Full Record Display

[New Search](#)

[Previous Page](#)

Click the icon to view the hierarchy.

[Semantic View \(JSON, JSONLD, RDF, N3/Turtle, N-Triples\)](#) [Represent](#)

Guardi, Francesco (Italian painter, 1712-179

Note: Venetian painter, during the first half of his career on decorations and church paintings; later became a vedutista (view painter) of Venetian urban life.

Names:

- Guardi, Francesco** ([preferred](#), [V](#), [index](#), [LC](#))
- Francesco Guardi** ([V](#), [display](#))
- Gardi, Francesco** ([V](#))
- Garde, Francesco** ([V](#))
- Gardis, Francesco** ([V](#))
- Gauda, Francesco** ([V](#))
- Guada, Francesco** ([V](#))
- Guarde, Francesco** ([V](#))
- Guardet, Francesco** ([V](#))
- Gvardi, Franchesko** ([V](#))
- Guardi, François** ([V](#))
- Guardi, Francisco** ([V](#))

Patricia Harpring © 2019 J. Paul Getty Trust. For educational purposes only. Do not distribute.

Contributors

AVERY, BHA, G
Courtauld

Sources

Avery Authority
Harald Szeem
Collections (20
J. Paul Getty M
Library of Con
M. Knoedler &
Collections (20
Provenance Inc
RILA/BHA (197
Witt Library, A

Nationalities:

Italian ([preferred](#))

Venetian

AAT

Roles:

artist ([preferred](#))

painter

landscapist

AAT

Gender: male

Birth and Death Places:

TGN

Born: [Venice \(Venezia province, Veneto, Italy\) \(inhabited place\)](#)

Died: [Venice \(Venezia province, Veneto, Italy\) \(inhabited place\)](#)

Related People or Corporate Bodies:

member of [Guardi family](#)

(Italian painters, active 18th century) [500060865]

parent of [Guardi, Giacomo](#)

(Italian painter, 1764-1835) [500023608]

sibling by marriage (in-law) of [Tiepolo, Giovanni Battista](#)

(Venetian painter, 1696-1770)

[500018523]

Cecilia Guardi married Tiepolo in 1719

sibling of [Guardi, Antonio](#)

(Italian painter, 1699-1760) [500025094]

sibling of [Guardi, Niccolò](#)

(Italian painter, 1715-1785) [500029088]



Merged information,
redundancy eliminated

Note links to other ULAN
records, to AAT and
TGN

ULAN

Using data

- Online Web searches
- Access to training materials and editorial guidelines
- Highest number of pages accessed at GRI every month (17,000 page views, 200,000 queries)
- Among the highest at Getty overall
- Demonstrating usefulness is important to proving the value of the project, re. budgets, etc.
- In addition, Getty Vocabularies released as LOD with very high use
- AAT and other vocabs available at satellite sites and in vendor systems



Top 15 GRI-wide page views per month (March 2019)		
No.	Page	Views
1	<u>Vocabs: AAT</u>	16,106
2	<u>Vocabs: ULAN</u>	11,826
3	<u>Vocabs: TGN</u>	9,479
4	<u>GRI landing page</u>	5,676
5	<u>GRI list of resources</u>	5,171
6	<u>Exhibition: monumentality</u>	4,273
7	<u>Vocabs: general information</u>	4,245
8	<u>Provenance: search</u>	3,895
9	<u>Library</u>	3,345
10	<u>Provenance: general information</u>	2,690
11	<u>BHA (Bibliography for History of Art)</u>	2,091
12	<u>Photo Archive</u>	1,759
13	<u>GRI: Digital Collections: Turkey photos</u>	1,673
14	<u>Vocabs: CONA</u>	1,489
15	<u>Vocabs: CDWA (cataloging rules for art)</u>	1,143

Abridged Overview of Getty Vocabularies

Using data

- Vocabulary data is licensed and used by hundreds of institutions and vendors
- Collections management systems (e.g., TMS)
- We contribute to VIAF
- Now linking vocabulary data in LOD in hundreds or thousands of new ways

Getty

<http://viaf.org/>

The VIAF (Virtual International Authority File) combines multiple name authority files into a single authority file by matching and linking widely-used authority files and making that information available.

VIAF Contributors

- Library of Congress/NACO
- National Library of Mexico
- British Library
- National Agricultural Library (U.S.)
- National Library of Medicine (U.S.)
- National Library of New Zealand
- Vatican Library
- Swiss National Library
- Library and Archives Canada
- Union List of Artist Names [Getty Research Institute]
- NUKAT Center of Warsaw University Library
- Center for Cultural Heritage, Hungary
- Western Switzerland
- Center)
- in
- ia

[Louis XIV, roi de France, 1638-1715](#) 🇫🇷 🇨🇦

[Louis XIV, King of France, 1638-1715](#) 🇺🇸 🇨🇦

[Louis XIV, koning van Frankrijk, 1638-1715](#) 🇳🇱

[Ludwik XIV \(król Francji ; 1638-1715\)](#) 🇵🇱

[Lluís XIV, rei de França, 1638-1715](#) 🇪🇸

[Luis XIV, Rey de Francia](#) 🇪🇸

[Louis 1638-1715 King of France XIV](#) 🇺🇸

[Ludwig XIV. Frankreich, König 1638-1715](#) 🇩🇪

[Ludvig XIV, kung av Frankrike, 1638-1715](#) 🇸🇪

[Louis XIV roi de France et de Navarre de 1643 à 1715](#) 🇫🇷

[Louis XIV, re di Francia, 1638-1715](#) 🇮🇹

[Ludviks XIV, Francijas karalis, 1638-1715](#) 🇱🇻

[Ludvík XIV., francouzský král, 1638-1715](#) 🇨🇿

[1638-1715 לואי 14, מלך צרפת](#) 🇮🇱

[Louis 14世, 1638-1715, フランス国王](#) 🇯🇵

[Louis <re di Francia ; 14.>](#) 🇮🇹

[Louis XIV, King of France \(French monarch, collector, and patron, 1638-1715\)](#) 🇺🇸

Abridged Overview of Getty Vocabularies

- GRI (with ULAN and TGN) contributes to VIAF, the Virtual International Authority File.
- Link to other sources in Linked Open Data

Thank you.

Patricia Harpring
Managing Editor
Getty Vocabulary Program

pharpring@getty.edu
vocab@getty.edu

Getty

Abridged Overview of Getty Vocabularies