

Miracles and Martyrs: Saints in the Middle Ages

The J. Paul Getty Museum at the Getty Center



1. Unknown

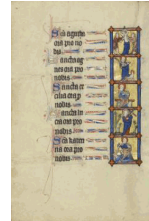
Initial B: Vincent Tied to a Millstone and Thrown into the Water, about 1320-25

from Breviary

Tempera colors, gold leaf, and ink on parchment

Leaf (trimmed): 16.7 x 11.1 cm (6 9/16 x 4 3/8 in.)

Ms. Ludwig IX 2, fol. 311v (83.ML.98.311v)



2. Unknown

Saints Agatha, Agnes, Cecilia, Lucy and Catherine, about 1300

from [Ruskin Hours](#)

Tempera colors, gold leaf, and ink on parchment

Leaf: 26.4 x 18.3 cm (10 3/8 x 7 3/16 in.)

Ms. Ludwig IX 3, fol. 105v (83.ML.99.105v)



3. Unknown

Saints Anastasia, Petronilla, Benedicta, Bridget and Gertrude, about 1300

from [Ruskin Hours](#)

Tempera colors, gold leaf, and ink on parchment

Leaf: 26.4 x 18.3 cm (10 3/8 x 7 3/16 in.)

Ms. Ludwig IX 3, fol. 106 (83.ML.99.106)



4. Workshop of the Bedford Master

French, active first half of 15th century

Saint Mark, about 1440-50

from Book of Hours

Tempera colors, gold leaf, gold paint, and ink on parchment

Leaf: 23.5 x 16.4 cm (9 1/4 x 6 7/16 in.)

Ms. Ludwig IX 6, fol. 208v (83.ML.102.208v)



5. Workshop of the Bedford Master
French, active first half of 15th century
Saint Luke Painting an Image of the Virgin, about 1440-50
from Book of Hours
Tempera colors, gold leaf, gold paint, and ink on parchment
Leaf: 23.5 x 16.4 cm (9 1/4 x 6 7/16 in.)
Ms. Ludwig IX 6, fol. 209 (83.ML.102.209)



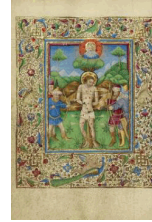
7. Master of Jacques of Luxembourg
French, active about 1460 - 1470
Saint Apollonia, about 1466-70
from Book of Hours
Tempera colors, gold leaf, silver leaf, and ink on parchment
Leaf: 16.4 x 11.4 cm (6 7/16 x 4 1/2 in.)
Ms. Ludwig IX 11, fol. 135 (83.ML.107.135)



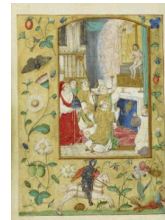
9. Taddeo Crivelli
Italian, died about 1479, active about 1451 - 1479
[Saint Peter Martyr](#), about 1469
from [Gualenghi-d'Este Hours](#)
Tempera colors, gold paint, gold leaf, and ink on parchment
Leaf: 10.8 x 7.9 cm (4 1/4 x 3 1/8 in.)
Ms. Ludwig IX 13, fol. 192v (83.ML.109.192v)



6. Unknown
A Male Saint Presenting the Patron to Saint Margaret, after 1460
from Book of Hours
Tempera colors, gold leaf, and ink on parchment
Leaf: 17.1 x 12.2 cm (6 3/4 x 4 13/16 in.)
Ms. Ludwig IX 9, fol. 13v (83.ML.105.13v)



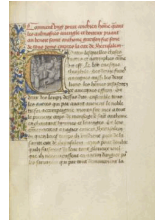
8. Unknown
The Martyrdom of Saint Sebastian, about 1460
from Book of Hours
Tempera colors, gold, and ink on parchment
Leaf: 17.1 x 12.1 cm (6 3/4 x 4 3/4 in.)
Ms. Ludwig IX 12, fol. 321v (83.ML.108.321v)



10. Workshop of Gerard Horenbout
Flemish, 1465 - 1541, active 1487 - about 1520
The Mass of Saint Gregory, about 1500
from Book of Hours
Tempera colors and gold paint on parchment
Leaf: 15.2 x 11.1 cm (6 x 4 3/8 in.)
Ms. Ludwig IX 17, fol. 102v (83.ML.113.102v)



11. Workshop of Gerard Horenbout
 Flemish, 1465 - 1541, active 1487 - about 1520
 The Mocking of Christ, about 1440-50
 from Book of Hours
 Tempera colors and gold paint on parchment
 Leaf: 15.2 x 11.1 cm (6 x 4 3/8 in.)
 Ms. Ludwig IX 17, fol. 103 (83.ML.113.103)



12. Master of the Brussels Romuléon or workshop
 Flemish, active about 1465
[Initial T: The Healing of the Blind after Touching the Body of Saint Anthony](#), about 1465-70
 from [Discovery and Translation of the Body of Saint Anthony](#)
 Tempera colors, gold leaf, gold paint, and ink on parchment
 Leaf: 24.8 x 17.6 cm (9 3/4 x 6 15/16 in.)
 Ms. Ludwig XI 8, fol. 38 (83.MN.127.38)



13. Unknown
 The Miracle of the Robe, about 1475
 from Mirror of History
 Tempera colors, gold leaf, and gold paint on parchment
 Leaf: 43.8 x 30.5 cm (17 1/4 x 12 in.)
 Ms. Ludwig XIII 5, v2, fol. 201v (83.MP.148.2.201v)



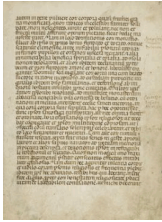
14. Jean Bourdichon
 French, 1457 - 1521, active Tours, France, early 1480s - 1521
[Saint Avia in Prison Receiving Communion from the Virgin](#), about 1480-85
 from [Katherine Hours](#)
 Tempera colors, gold, and ink on parchment
 Leaf: 16.4 x 11.6 cm (6 7/16 x 4 9/16 in.)
 Ms. 6, fol. 143 (84.ML.746.143)



15. Unknown
 February: A Man Warming by a Fire, about 1415-20
 from [Book of Hours](#)
 Tempera colors, gold paint, gold leaf, and ink on parchment
 Leaf: 20.5 x 14.8 cm (8 1/16 x 5 13/16 in.)
 Ms. 22, fol. 2 (86.ML.571.2)



16. Attributed to Anovelo da Imbonate
 Italian (Lombard), active about 1400
[Aimo and Vermondo Holding Up the Church of Saint Victor](#), about 1400
 from [Legend of the Venerable Men Aimo and Vermondo](#)
 Tempera colors, gold leaf, and ink on parchment
 Leaf: 25.6 x 18.4 cm (10 1/16 x 7 1/4 in.)
 Ms. 26, fol. 4v (87.MN.33.4v)



17. Unknown

The Mocking of Christ, about 1440-50
from [Legend of the Venerable Men Aimo and Vermondo](#)

Tempera colors, gold leaf, and ink on parchment
Leaf: 25.6 x 18.4 cm (10 1/16 x 7 1/4 in.)
Ms. 26, fol. 5 (87.MN.33.5)



19. Unknown maker, German

Saint Sebastian, about 1520-30
Oxide glass paint and silver stain on tint glass
Object: Diam.: 19.5 x D: 1 cm (Diam.: 7 11/16 x D:
3/8 in.)
2003.67



18. Attributed to Rinaldo da Siena

Italian, active 1270s
[Initial G: The Stigmatization of St. Francis](#), about 1275
Leaf from a gradual

Tempera colors and gold leaf on parchment
Initial: 18.1 x 12.9 cm (7 1/8 x 5 1/16 in.)
Ms. 71, verso (2003.15.verso)



20. Lieven van Lathem

Flemish, about 1430 - 1493, active 1454 - 1493
[Gracienne Takes Leave of Her Father the Sultan](#), after 1464

Tempera colors, gold, and ink on parchment
Leaf: 37 x 25.5 cm (14 9/16 x 10 1/16 in.)
Ms. 111, fol. 188v (2013.46.188v)



The J. Paul Getty Museum

September 10, 2013

Additional information about some of these works of art can be found by searching [getty.edu](http://www.getty.edu/art/gettyguide/) at <http://www.getty.edu/art/gettyguide/>

© 2013 J. Paul Getty Trust