

Traversing the Globe through Illuminated Manuscripts

January 26 to April 10, 2016

The J. Paul Getty Museum at the Getty Center



1. Unknown (Maya)

Vase with Seated Scribes, 600 - 900

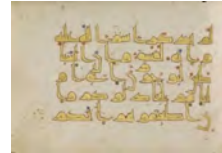
Ceramic

Object: 10.2 × 13.5 × 10.2 cm (4 × 5 5/16 × 4 in.) Los

Angeles County Museum of Art, Anonymous gift

Image: www.lacma.org

EX.2016.2.26



2. Unknown

[Text Pages](#), 9th century

Bifolium from a Fragmentary Koran (fols. 4 and 9)

Pen and ink, gold paint, and tempera colors on parchment

Leaf: 14.4 x 20.8 cm (5 11/16 x 8 3/16 in.)

The J. Paul Getty Museum, Los Angeles

Ms. Ludwig X 1, fol. 9. recto (83.MM.118.3.9. recto)



3. Unknown

[Text Pages](#), 9th century

Bifolium from a Fragmentary Koran (fols. 5 and 8)

Pen and ink, gold paint, and tempera colors on parchment

Leaf: 14.4 x 20.8 cm (5 11/16 x 8 3/16 in.)

The J. Paul Getty Museum, Los Angeles

Ms. Ludwig X 1, fol. 8. verso (83.MM.118.4.8. verso)



4. Unknown

[Decorated Text Page](#), 10th century

Leaf from Life of Apa Samuel

Tempera colors and ink on parchment

Leaf: 34.9 x 25.4 cm (13 3/4 x 10 in.)

The J. Paul Getty Museum, Los Angeles

Ms. 12, recto (85.MS.119. recto)



5. Unknown
Scenes from the Buddha's Life; Buddhas with a Bodhisattva,
 1075 - 1100
 Opaque watercolor on wood
 Unframed: 5.4 x 119.4 cm (2 1/8 x 47 in.)
 Los Angeles County Museum of Art, From the Nasli and Alice
 Heeramaneck Collection, Museum Associates Purchase
 Image: www.lacma.org
 EX.2016.2.25.1



6. Unknown
Saint Matthew, about 1120 - 1140
 from Gospel Book
 Tempera colors, gold, and silver on parchment
 Leaf: 22.9 x 16.5 cm (9 x 6 1/2 in.)
 The J. Paul Getty Museum, Los Angeles
 Ms. Ludwig II 3, fol. 9v (83.MB.67.9v)



7. Unknown
Decorated Incipit Page, about 1120 - 1140
 from Gospel Book
 Tempera colors, gold, and silver on parchment
 Leaf: 22.9 x 16.5 cm (9 x 6 1/2 in.)
 The J. Paul Getty Museum, Los Angeles
 Ms. Ludwig II 3, fol. 10 (83.MB.67.10)



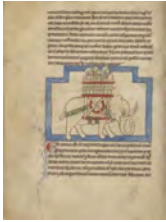
8. Unknown
Christ Carrying the Cross, about 1190 - 1200 and text
 about 1480 - 1490
 from Life of Christ with added devotional texts and
 illuminations
 from Illustrated Vita Christi, with devotional
 supplements
 Tempera colors and gold leaf on parchment
 Leaf: 11.9 x 17 cm (4 11/16 x 6 11/16 in.)
 The J. Paul Getty Museum, Los Angeles
 Ms. 101, fol. 69v (2008.3.69v)



9. Unknown
 Decorated Text Page, about 1190 - 1200 and text about
 1480 - 1490
 from Life of Christ with added devotional texts and
 illuminations
 from Illustrated Vita Christi, with devotional
 supplements
 Ink on parchment
 Leaf: 11.9 x 17 cm (4 11/16 x 6 11/16 in.)
 The J. Paul Getty Museum, Los Angeles
 Ms. 101, fol. 70 (2008.3.70)



10. Unknown
Scenes from the Life of David, about 1250
 Leaf from the Morgan Picture Bible
 Tempera colors and gold leaf on parchment
 Leaf (trimmed on all sides): 32.5 x 29 cm (12 13/16 x 11
 7/16 in.)
 The J. Paul Getty Museum, Los Angeles
 Ms. Ludwig I 6, recto (83.MA.55.recto)



11. Unknown
 An Elephant, about 1250 - 1260
 from Northumberland Bestiary
 Pen-and-ink drawings tinted with body color and translucent washes on parchment
 Leaf: 21 x 15.7 cm (8 1/4 x 6 3/16 in.)
 The J. Paul Getty Museum, Los Angeles
 Ms. 100, fol. 17v (2007.16.17v)



12. T'oros Roslin
 Armenian, active 1256 - 1268
 Canon Table Page, 1256
 Tempera and gold paint on parchment
 Leaf: 26.5 x 19 cm (10 7/16 x 7 1/2 in.)
 The J. Paul Getty Museum, Los Angeles, Gift of the Catholicosate of the Great House of Cilicia
 Ms. 59, fol. 4 (94.MB.71.4.4.recto)



13. T'oros Roslin
 Armenian, active 1256 - 1268
 Canon Table Page, 1256
 Tempera and gold paint on parchment
 Leaf: 26.5 x 19 cm (10 7/16 x 7 1/2 in.)
 The J. Paul Getty Museum, Los Angeles, Gift of the Catholicosate of the Great House of Cilicia
 Ms. 59, fol. 5v (94.MB.71.4.5.verso)



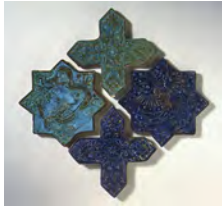
14. Unknown
 Star Tile, about 1270 - 1280
 Overglaze painted with colors and gold (lajvardina)
 Object: H: 24.8 cm (9 3/4 in.)
 Los Angeles County Museum of Art, Shinji Shumeikai Acquisition Fund
 Image: www.lacma.org
 EX.2016.2.8.1



15. Unknown
 Cross Tile, about 1270 - 1280
 Overglaze painted with colors and gold (lajvardina)
 Object: H: 24.8 cm (9 3/4 in.)
 Los Angeles County Museum of Art, Shinji Shumeikai Acquisition Fund
 Image: www.lacma.org
 EX.2016.2.8.2



16. Unknown
 Star Tile, about 1270 - 1280
 Overglaze painted with colors and gold (lajvardina)
 Object: H: 24.8 cm (9 3/4 in.)
 Los Angeles County Museum of Art, Shinji Shumeikai Acquisition Fund
 Image: www.lacma.org
 EX.2016.2.8.3



17. Unknown
[Cross Tile](#), about 1270 - 1280
Overglaze painted with colors and gold (lajvardina)
Object: H: 24.8 cm (9 3/4 in.)
Los Angeles County Museum of Art, Shinji Shumeikai
Acquisition Fund
Image: www.lacma.org
EX.2016.2.8.4



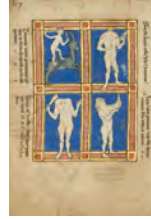
19. Unknown
[Decorated Text Page](#), late 13th century from
Gospel Book
Tempera colors, gold leaf, gold ink, and ink on
parchment
Leaf: 21 x 14.9 cm (8 1/4 x 5 7/8 in.)
The J. Paul Getty Museum, Los Angeles
Ms. 65, fol. 14 (98.MB.151.14)



21. Unknown
[Creatures from the Ends of the Earth](#), after 1277 from
Bestiary
Tempera colors, pen and ink, gold leaf, and gold paint
on parchment
Leaf: 23.3 x 16.4 cm (9 3/16 x 6 7/16 in.)
The J. Paul Getty Museum, Los Angeles
Ms. Ludwig XV 4, fol. 118 (83.MR.174.118)



18. Unknown
[Saint Matthew](#), late 13th century
from Gospel Book
Tempera colors, gold leaf, gold ink, and ink on
parchment
Leaf: 21 x 14.9 cm (8 1/4 x 5 7/8 in.)
The J. Paul Getty Museum, Los Angeles
Ms. 65, fol. 13v (98.MB.151.13v)



20. Unknown
[Creatures from the Ends of the Earth](#), after 1277 from
Bestiary
Tempera colors, pen and ink, gold leaf, and gold paint
on parchment
Leaf: 23.3 x 16.4 cm (9 3/16 x 6 7/16 in.)
The J. Paul Getty Museum, Los Angeles
Ms. Ludwig XV 4, fol. 117v (83.MR.174.117v)



22. Unknown
[Initial N: A King Speaking to Four Men and A Joust
between Two Knights](#), about 1290 - 1310
from Feudal Customs of Aragon
Tempera colors, gold leaf, and ink on parchment
Leaf: 36.5 x 24 cm (14 3/8 x 9 7/16 in.)
The J. Paul Getty Museum, Los Angeles
Ms. Ludwig XIV 6, fol. 255 (83.MQ.165.255)

23. Toros of Taron
Christ Before Caiphas, 1303 - 1377
from Gladzor Gospels
Leaf: 23.5 x 17.8 cm (9 1/4 x 7 in.)
Charles E. Young Research Library. UCLA Library Special
Collections, L.99.MB.52.p. 441



24. Toros of Taron
The Raising of Lazarus, 1303 - 1377
from Gladzor Gospels
Leaf: 23.5 x 17.8 cm (9 1/4 x 7 in.)
Charles E. Young Research Library. UCLA Library Special
Collections, L.99.MB.52.p. 522



25. Unknown
Henricus de Carreto
Ezekiel's Visions, about 1320 - 1321
Tempera colors and gold on parchment
Leaf: 36.7 x 25.4 cm (14 7/16 x 10 in.)
Robert McCarthy
L.2014.76



26. Unknown
Henricus de Carreto
Ezekiel's Visions, about 1320 - 1321
Tempera colors and gold on parchment
Leaf: 36.7 x 25.4 cm (14 7/16 x 10 in.)
Robert McCarthy
L.2014.77



27. Unknown
Henricus de Carreto
Ezekiel's Visions, about 1320 - 1321
Tempera colors and gold on parchment
Leaf: 36.4 x 27 cm (14 5/16 x 10 5/8 in.)
Robert McCarthy
L.2014.78



28. Unknown
Henricus de Carreto
Ezekiel's Visions, about 1320 - 1321
Tempera colors and gold on parchment
Leaf: 36.9 x 26.6 cm (14 1/2 x 10 1/2 in.)
Robert McCarthy
L.2014.79

29. Unknown
Henricus de Carreto
Ezekiel's Visions, about 1320 - 1321
Tempera colors and gold on parchment
Leaf: 31.4 x 26.5 cm (12 3/8 x 10 7/16 in.)
Robert McCarthy
L.2014.80

January 11, 2016



30. Unknown
Saint Mark, 1386
 from Gospel Book
 Black ink and watercolors on paper bound between wood boards covered with dark brown kidskin
 Leaf: 24 x 16.5 cm (9 7/16 x 6 1/2 in.)
 The J. Paul Getty Museum, Los Angeles
 Ms. Ludwig II 6, fol. 84v (83.MB.70.84v)



31. Unknown
Decorated Incipit Page, 1386
 from Gospel Book
 Black ink and watercolors on paper bound between wood boards covered with dark brown kidskin
 Leaf: 24 x 16.5 cm (9 7/16 x 6 1/2 in.)
 The J. Paul Getty Museum, Los Angeles
 Ms. Ludwig II 6, fol. 85 (83.MB.70.85)



32. Unknown
The Rebuilding of the Abbey Church of Saint-Wandrille, about 1400 - 1414
 from Chronicle of Normandy
 Leaf: 29.1 x 19.1 cm (11 7/16 x 7 1/2 in.)
 The J. Paul Getty Museum, Los Angeles
 Ms. Ludwig XIII 4, fol. 49v (83.MP.147.49v)



33. Unknown
Robert I and a Presentation of a Hawk, about 1400 - 1414
 from Chronicle of Normandy
 Leaf: 29.1 x 19.1 cm (11 7/16 x 7 1/2 in.)
 The J. Paul Getty Museum, Los Angeles
 Ms. Ludwig XIII 4, fol. 50 (83.MP.147.50)



34. Unknown
Moses Defeating the Moors, about 1400 - 1410 from World Chronicle
 Tempera colors, gold, silver paint, and ink on parchment
 Leaf: 33.5 x 23.5 cm (13 3/16 x 9 1/4 in.)
 The J. Paul Getty Museum, Los Angeles
 Ms. 33, fol. 66v (88.MP.70.66v)



35. Unknown
 Hafiz-i Abru
The Appearance of Shakyamuni (the Buddha) after His Death, about 1425
 Ink, opaque watercolor on paper
 Leaf: 33 x 22.30 cm
 Los Angeles County Museum of Art, The Nasli M. Heeramanek Collection, gift of Joan Palevsky
 Image: www.lacma.org
 EX.2016.2.15



36. Workshop of the Bedford Master
 French, active first half of 15th century
Saint James as a Pilgrim with a Purse and Staff
 about 1440 - 1450
 from Book of Hours
 Tempera colors, gold leaf, gold paint, and ink on parchment
 Leaf: 23.5 x 16.4 cm (9 1/4 x 6 7/16 in.)
 The J. Paul Getty Museum, Los Angeles
 Ms. Ludwig IX 6, fol. 203v (83.ML.102.203v)



37. Unknown
Kalaka Converts Bricks to Gold
 about 1450
 Ink, opaque watercolor, and gold on paper
 Leaf: 10.8 x 25.4 cm (4 1/4 x 10 in.)
 Los Angeles County Museum of Art, From the Nasli and Alice Heeramaneck Collection, Museum Associates Purchase
 Image: www.lacma.org
 EX.2016.2.24



38. Attributed to Franco dei Russi
 Italian, active about 1453 - 1482
Initial T: Isaac and Esau, about 1455 - 1461
 Leaf from an antiphonal
 Tempera and gold leaf on parchment
 Leaf: 58.1 x 41.5 cm (22 7/8 x 16 5/16 in.)
 The J. Paul Getty Museum, Los Angeles
 Ms. 98, recto (2005.38.recto)



39. Unknown
The Adoration of the Magi, about 1460 from Book of Hours
 Tempera colors, gold, and ink on parchment
 Leaf: 17.1 x 12.1 cm (6 3/4 x 4 3/4 in.)
 The J. Paul Getty Museum, Los Angeles
 Ms. Ludwig IX 12, fol. 256v (83.ML.108.256v)



40. Unknown
The French King at Court, about 1460 - 1470
 from Story of Two Lovers
 Tempera colors, gold leaf, gold paint, and ink on parchment
 Leaf: 17.6 x 11.4 cm (6 15/16 x 4 1/2 in.)
 The J. Paul Getty Museum, Los Angeles
 Ms. 68, fol. 1 (2001.45.1)



41. Frate Nebridio
 Italian, died before 1503, active second half of the 15th century
Initial A: Saints Maurice and Theofredus, about 1460 - 1480
 Cutting from an antiphonal
 Tempera and gold leaf on parchment
 Leaf: 11.5 x 11.5 cm (4 1/2 x 4 1/2 in.)
 The J. Paul Getty Museum, Los Angeles
 Ms. 91, recto (2005.21.recto)



42. Lieven van Lathem
Flemish, about 1430 - 1493, active 1454 - 1493
[Gracienne Taking Leave of Her Father the Sultan](#), 1464
from Romance of Gillion de Trazegnies
Tempera colors, gold, and ink on parchment
Leaf: 37 x 25.5 cm (14 9/16 x 10 1/16 in.)
The J. Paul Getty Museum, Los Angeles
Ms. 111, fol. 188v (2013.46.188v)



43. Master of the Brussels Romuléon or workshop
Flemish, active about 1465
[Bishop Theophilus Finding the Grave of Saint Anthony](#),
about 1465 - 1470
from Discovery and Translation of the Body of Saint
Anthony
Tempera colors, gold leaf, gold paint, and ink on
parchment
Leaf: 24.8 x 17.6 cm (9 3/4 x 6 15/16 in.)
The J. Paul Getty Museum, Los Angeles
Ms. Ludwig XI 8, fol. 29 (83.MN.127.29)



44. Follower of Hans Schilling
German, active 1459 - 1467
from the Workshop of Diebold Lauber
German, active 1427 - 1467
[Josaphat Destroying Pagan Idols](#), 1469 from
Barlaam and Josaphat
Ink, colored washes, and tempera colors on paper
Leaf: 28.6 x 20.3 cm (11 1/4 x 8 in.)
The J. Paul Getty Museum, Los Angeles
Ms. Ludwig XV 9, fol. 101 (83.MR.179.101)



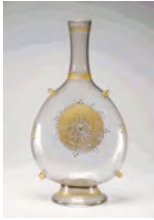
45. Master of the Jardin de vertueuse consolation and
assistant
Flemish, active 3rd quarter of 15th century
[Bagoas Pleads on Behalf of Nabarzanes](#), about 1470 -
1475
from Book of the Deeds of Alexander the Great
Tempera colors, gold leaf, gold paint, and ink on
parchment
Leaf: 43.2 x 33 cm (17 x 13 in.)
The J. Paul Getty Museum, Los Angeles
Ms. Ludwig XV 8, fol. 133v (83.MR.178.133v)



46. Unknown
[The Angel of Paradise with a Sword](#), about 1475 from
Mirror of History
Tempera colors, gold leaf, and gold paint on parchment
Leaf: 43.8 x 30.5 cm (17 1/4 x 12 in.)
The J. Paul Getty Museum, Los Angeles
Ms. Ludwig XIII 5, v1, fol. 54v (83.MP.148.1.54v)



47. Unknown
[The Land of India](#), about 1475
from Mirror of History
Tempera colors, gold leaf, and gold paint on parchment
Leaf: 43.8 x 30.5 cm (17 1/4 x 12 in.)
The J. Paul Getty Museum, Los Angeles
Ms. Ludwig XIII 5, v1, fol. 55 (83.MP.148.1.55)



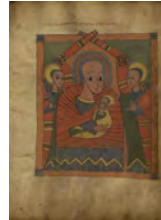
48. Unknown
Pilgrim Flask, late 15th or early 16th century
 Free-blown colorless (slightly pink) glass with gold leaf, enamel, and applied decoration
 Object: 37.62 x 20cm (14 13/16 x 7 7/8 in.)
 The J. Paul Getty Museum, Los Angeles
 84.DK.538



49. Master of the Getty Froissart
 Flemish, active about 1475 - 1485
The Embassy of the Duke of Brabant before the King of France and the Duke of Berry, about 1480 - 1483 from
 Chronicles (Book Three)
 Tempera colors, gold leaf, gold paint, and ink on parchment
 Leaf: 48 x 35 cm (18 7/8 x 13 3/4 in.)
 The J. Paul Getty Museum, Los Angeles
 Ms. Ludwig XIII 7, fol. 272v (83.MP.150.272v)



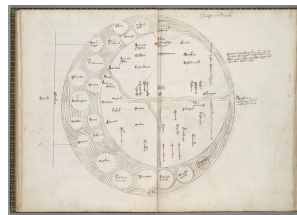
50. Unknown
The Seventy-Two Disciples, about 1480 - 1520
 from Gospel Book
 Tempera on parchment
 Leaf: 34.5 x 25.6 cm (13 9/16 x 10 1/16 in.)
 The J. Paul Getty Museum, Los Angeles
 Ms. 105, fol. 9v (2010.17.9v)



51. Unknown
The Virgin and Child with the Archangels Michael and Gabriel, about 1480 - 1520
 from Gospel Book
 Tempera on parchment
 Leaf: 34.5 x 25.6 cm (13 9/16 x 10 1/16 in.)
 The J. Paul Getty Museum, Los Angeles
 Ms. 105, fol. 10 (2010.17.10)



52. Unknown
 Nizami Ganjavi
Iskandar at the Kaaba, about 1485 - 1495
 Ink, opaque watercolor, and gold on paper
 Leaf: 22.8 x 15.6 cm (9 x 6 1/8 in.)
 Los Angeles County Museum of Art, The Nasli M.
 Heeramanek Collection, gift of Joan Palevsky
 Image: www.lacma.org
 EX.2016.2.6



53. Unknown
 Prophecy Map of the World
 1485 - 1499
 Ink on paper
 Courtesy of The Huntington Library, Art Collections, and
 Botanical Gardens, San Marino, California, HM 83, fol. 6v-7
 EX.2016.2.13



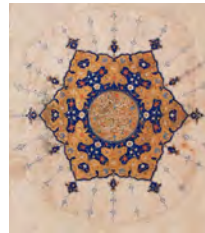
54. Erhard Reuwich
Bernhard von Breydenbach
[Ethiopians](#), published 1486
Woodcut
Unframed: 10.5 x 14.9 cm (4 1/8 x 5 7/8 in.)
Los Angeles County Museum of Art, Gift of Mr. and Mrs. Oscar Salzer
Image: www.lacma.org
EX.2016.2.2



55. Erhard Reuwich
Bernhard von Breydenbach
[Saracens](#), published 1486
Woodcut
Unframed: 31.1 x 19.7 cm (12 1/4 x 7 3/4 in.)
Los Angeles County Museum of Art, Gift of Mr. and Mrs. Oscar Salzer
Image: www.lacma.org
EX.2016.2.3



56. Unknown
Nizami Ganjavi
[Khusraw Parviz Enthroned](#), 1st half of 16th century
Opaque watercolor, gold, and ink
Closed: 20.3 cm (8 in.)
Los Angeles County Museum of Art, The Phil Berg Collection
Image: www.lacma.org
EX.2016.2.1



57. Unknown
[Shamsa Medallions with text from the Qur'an](#)
(1788–89), early 16th century
Watercolors, gold, and ink on paper
32.1 x 20.6 cm (12 5/8 x 8 1/8 in.)
Los Angeles County Museum of Art, The Nasli M. Heeramanek Collection, gift of Joan Palevsky
Image: www.lacma.org
EX.2016.2.18



58. Unknown
[Shamsa Medallions with text from the Qur'an](#)
(1788–89), early 16th century
Watercolors, gold, and ink on paper
32.4 x 20.6 cm (12 3/4 x 8 1/8 in.)
Los Angeles County Museum of Art, The Nasli M. Heeramanek Collection, gift of Joan Palevsky
Image: www.lacma.org
EX.2016.2.19

59. Moses ben Jacob Cordovero
Isaac Luria
Hayyim ben Joseph Vital
[The Sephirothic Tree](#), 16th century
Ink on paper on paper
Charles E. Young Research Library, UCLA Library Special Collections
EX.2016.2.20

60. Unknown
The Mandala of Mahavira, 16th century
Opaque watercolor on palm leaf paper
Norton Simon Museum, Gift of Narendra and Rita
Parson
EX.2016.2.22.1



62. Unknown
[Chasuble Front](#), early 16th century
Cut and voided silk velvet on metallic ground
Object: H: 20.3 to 41.9 x L: 71.1 cm (8 to 16 1/2 x 28 in.)
Los Angeles County Museum of Art, Los Angeles County
Fund
Image: www.lacma.org
EX.2016.2.16



64. Unknown
Nizami Ganjavi
[The Battle of Iskandar with the Zangi](#), 1517
Opaque watercolor, gold, and ink on paper
Leaf: 19 x 10.3 cm (7 1/2 x 4 1/16 in.)
Los Angeles County Museum of Art, The Nasli M.
Heeramaneck Collection, gift of Joan Palevsky
Image: www.lacma.org
EX.2016.2.9

61. Unknown
The Mandala of Mahavira, 16th century
Opaque watercolor on palm leaf paper
Norton Simon Museum, Gift of Narendra and Rita
Parson
EX.2016.2.22.2



63. Unknown
[Blue and White Dish with a Merchant Ship](#), about 1510
Tin-glazed earthenware
Object: H: 4.76 x Diam.: 24.29cm (H: 1 7/8 x Diam.:
9 9/16 in.)
The J. Paul Getty Museum, Los Angeles
84.DE.109



65. Unknown, French
[Hercules Pendant](#), about 1540
Gold, enamel (white, blue and black), and a baroque
pearl
Object: 6 x 5.4 cm (2 3/8 x 2 1/8 in.)
The J. Paul Getty Museum, Los Angeles
85.SE.237



66. Unknown
 Nur ad-Din Abd ar-Rahman Jami
 Afghan, 1414 - 1492
[The Ladies of Egypt Stunned by Yusuf's Beauty](#),
 about 1560
 Ink, opaque watercolors, and gold on paper Leaf: 17.1
 x 10.5 cm (6 3/4 x 4 1/8 in.)
 Los Angeles County Museum of Art, The Nasll M.
 Heeramanek Collection, gift of Joan Palevsky Image:
www.lacma.org
 EX.2016.2.23



67. Abraham Ortelius
 Flemish, 1527 - 1598
 Map of the World, 1573
 Engraving
 Closed: 41.8 x 28.5 x 5.5 cm (16 7/16 x 11 1/4 x 2
 3/16 in.)
 The Getty Research Institute
 93-B9804



68. Unknown
 Narrative Scroll Extolling Manavinayaka, about 1575
 Opaque watercolor on cotton
 Open: 184.2 x 35.6 cm (72 1/2 x 14 in.)
 The Norton Simon Foundation, Gift of Mr. Norton
 Simon
 EX.2016.2.21



69. Unknown
[Maritime Scene](#), late 16th or early 17th century
 Silk and metallic thread double cloth
 Object: 16.5 x 13.3 cm (6 1/2 x 5 1/4 in.)
 Los Angeles County Museum of Art, Costume Council Fund
 Image: www.lacma.org
 EX.2016.2.17



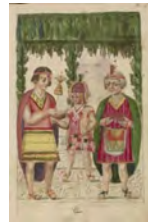
70. Heinrich Bünting
 German, 1545 - 1606
 The World as a Clover Leaf with Jerusalem at the Center,
 1591-1597
 Woodcut
 Closed: 34.1 x 8.9 x 8.6 cm (13 7/16 x 3 1/2 x 3 3/8 in.)
 The Getty Research Institute
 44-2.bw



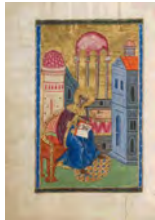
71. Abraham Gessner
 Swiss, 1552 - 1613
[Globe Cup](#), about 1600
 Silver, parcel-gilt
 Object: H: 59.1 cm (23 1/4 in.)
 Los Angeles County Museum of Art, William Randolph
 Hearst Collection
 Image: www.lacma.org
 EX.2016.2.7



72. Unknown
 Firdawsi, Persian, 935-1025
[Zahhak Enthroned](#) with the Two Daughters of Jamshid, about 1615
 Ink, opaque watercolor, and gold on paper
 Leaf: 19.4 x 16.5 cm (7 5/8 x 6 1/2 in.)
 Los Angeles County Museum of Art, Museum Acquisition Fund,
 Indian Art Acquisition Fund, and Julian C. Wright Bequest
 Image: www.lacma.org
 EX.2016.2.14



73. Unknown
[The Investiture of Sichi Roca by Manco Capac](#),
 completed in 1616
 from General History of Peru
 The J. Paul Getty Museum, Los Angeles
 Ms. Ludwig XIII 16, fol. 21 (83.MP.159.21)



74. Malnazar
 Armenian, active about 1630s
 and Aghap'ir
 Armenian, active about 1630s
[Solomon Writing](#), 1637 - 1638
 from Bible
 Tempera colors, gold paint, and gold leaf on parchment
 Leaf: 25.2 x 18.3 cm (9 15/16 x 7 3/16 in.)
 The J. Paul Getty Museum, Los Angeles
 Ms. Ludwig I 14, fol. 358v (83.MA.63.358v)



75. Cesare Vecellio
 An Indian Chief from Virginia, from *The Clothing, Ancient and Modern, of Various Parts of the World* (text in Italian), 1664
 Woodcut
 Closed: 19 x 12.5 x 4.5 cm (7 1/2 x 4 15/16 x 1 3/4 in.)
 The Getty Research Institute
 2561-053



76. Johann Joachim Prack von Asch
 Autograph album of Johann Joachim Prack von Asch,
 1587-1612
 Bound manuscript
 14 cm (5 1/2 in.)
 The Getty Research Institute
 2013.M.24



The J. Paul Getty Museum

January 11, 2016

Additional information about some of these works of art can be found by searching [getty.edu](http://www.getty.edu/art/collection/) at <http://www.getty.edu/art/collection/>

© 2016 J. Paul Getty Trust