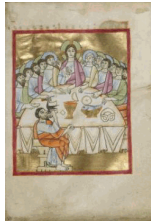


# Eat, Drink, and Be Merry: Food in the Middle Ages and Renaissance

October 13, 2015 to January 3, 2016  
The J. Paul Getty Museum at the Getty Center



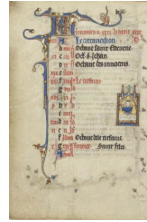
1. Unknown  
[The Last Supper](#), about 1030 - 40  
from *Benedictional*  
Tempera colors, gold leaf, and ink on parchment  
Leaf: 23.2 x 16 cm (9 1/8 x 6 5/16 in.)  
The J. Paul Getty Museum, Los Angeles  
Ms. Ludwig VII 1, fol. 38 (83.MI.90.38)



2. Unknown  
[December: Baking Bread](#), mid-1200s  
from *Psalter*  
Tempera colors, gold leaf, and ink on parchment  
Leaf: 23.5 x 16.5 cm (9 1/4 x 6 1/2 in.)  
The J. Paul Getty Museum, Los Angeles  
Ms. 14, fol. 8v (85.MK.239.8v)



3. Unknown  
[Initial D: A Nun Feeding a Leper in Bed](#), about 1275 - 1300  
from *Psalter*  
Tempera colors and gold leaf on parchment  
Leaf: 21.6 x 15.6 cm (8 1/2 x 6 1/8 in.)  
The J. Paul Getty Museum, Los Angeles  
Ms. Ludwig VIII 3, fol. 43 (83.MK.94.43)



4. Unknown  
[January: Janus Feasting](#), about 1300  
from *Ruskin Hours*  
Tempera colors, gold leaf, and ink on parchment  
Leaf: 26.4 x 18.3 cm (10 3/8 x 7 3/16 in.)  
The J. Paul Getty Museum, Los Angeles  
Ms. Ludwig IX 3, fol. 2v (83.ML.99.2v)

5. Unknown maker, French  
[The Baptism of Christ; The Marriage at Cana; Christ's Entry into Jerusalem; The Last Supper](#), about 1320  
Tempera colors and gold on parchment  
Leaf: 29 x 20.3 cm (11 7/16 x 8 in.)  
Robert McCarthy  
L.2014.68

September 9, 2015

Additional information about some of these works of art can be found by searching [getty.edu](http://www.getty.edu/art/collection/) at <http://www.getty.edu/art/collection/>



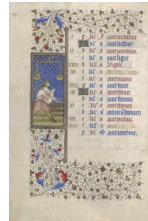
6. Attributed to the Illustratore (Andrea da Bologna?)  
Italian, active 2nd quarter of 14th century  
[Harvest Scene](#), before 1340  
from Cutting from Digest  
Cutting from Digestum novum  
Tempera colors, gold leaf, and ink on parchment  
Leaf: 14.4 x 7.6 cm (5 11/16 x 3 in.)  
The J. Paul Getty Museum, Los Angeles  
Ms. 13, verso (85.MS.213.verso)



7. Unknown maker, Silesian  
Court workshop of Duke Ludwig I of Liegnitz and Brieg  
Polish, 1364 - 1398  
[Saint Hedwig Refusing to Drink Wine; Saint Hedwig Praying before an Altar](#), 1353  
from The Life of the Blessed Hedwig  
Tempera colors, colored washes, and ink on parchment  
Leaf: 34.1 x 24.8 cm (13 7/16 x 9 3/4 in.)  
The J. Paul Getty Museum, Los Angeles  
Ms. Ludwig XI 7, fol. 30v (83.MN.126.30v)



8. Unknown  
[The Israelites Collecting Manna from Heaven](#), about 1400 - 1410  
from World Chronicle  
Tempera colors, gold, silver paint, and ink on parchment  
Leaf: 33.5 x 23.5 cm (13 3/16 x 9 1/4 in.)  
The J. Paul Getty Museum, Los Angeles  
Ms. 33, fol. 81v (88.MP.70.81v)



9. Workshop of the Rohan Master  
French, active about 1410 - 1440  
[A Man Sowing](#), about 1415 - 1420  
from Book of Hours  
Tempera colors, gold paint, gold leaf, and ink on parchment  
Leaf: 20.5 x 14.8 cm (8 1/16 x 5 13/16 in.)  
The J. Paul Getty Museum, Los Angeles  
Ms. 22, fol. 9v (86.ML.571.9v)



10. Unknown  
[Hunters Roasting a Dismembered Boar's Carcass](#), about 1430 - 1440  
from Book of the Hunt  
Tempera colors, gold paint, silver paint, and gold leaf on parchment  
Leaf: 26.4 x 18.4 cm (10 3/8 x 7 1/4 in.)  
The J. Paul Getty Museum, Los Angeles  
Ms. 27, fol. 67v (87.MR.34.67v)



11. Workshop of the Bedford Master  
French, active first half of 15th century  
[The Holy Family](#), about 1440 - 1450  
from Book of Hours  
Tempera colors, gold leaf, gold paint, and ink on parchment  
Leaf: 23.5 x 16.4 cm (9 1/4 x 6 7/16 in.)  
The J. Paul Getty Museum, Los Angeles  
Ms. Ludwig IX 6, fol. 181 (83.ML.102.181)



12. Master of the Oxford Hours  
 French, active about 1440s  
[Harvest Scene](#), before 1340  
 from City of God  
 Tempera colors, gold and silver paint on parchment  
 Leaf: 36.2 x 27.3 cm (14 1/4 x 10 3/4 in.)  
 The J. Paul Getty Museum, Los Angeles  
 Ms. Ludwig XI 10, fol. 31v (83.MN.129.31v)



13. Workshop of Willem Vrelant  
 Flemish, died 1481, active 1454 - 1481  
 Attributed to Willem Vrelant  
 Flemish, died 1481, active 1454 - 1481  
[July: A Man Reaping](#), early 1460s  
 from Arenberg Hours  
 Tempera colors, gold leaf, and ink on parchment  
 Leaf: 25.6 x 17.3 cm (10 1/16 x 6 13/16 in.)  
 The J. Paul Getty Museum, Los Angeles  
 Ms. Ludwig IX 8, fol. 7 (83.ML.104.7)

14. Taddeo Crivelli  
 Italian, died about 1479, active about 1451 - 1479  
[Saint Anthony of Padua](#), about 1469  
 from Gualenghi-d'Este Hours  
 Tempera colors, gold paint, gold leaf, and ink on parchment  
 Leaf: 10.8 x 7.9 cm (4 1/4 x 3 1/8 in.)  
 The J. Paul Getty Museum, Los Angeles  
 Ms. Ludwig IX 13, fol. 193v (83.ML.109.193v)

15. Master of the Dresden Prayer Book  
 Flemish, active about 1480 - 1515  
 Unknown  
[The Temperate and the Intemperate](#), about 1475 - 1480  
 from The Temperate and the Intemperate: Miniature  
 from Valerius Maximus, *Faits et dits mémorables des romains*, translation by Simon de Hesdin and Nicolas de Gonesse of *Facta et dicta memorabilia*  
 Tempera colors and ink on parchment  
 Leaf [cutting]: 17.5 x 19.4 cm (6 7/8 x 7 5/8 in.)  
 The J. Paul Getty Museum, Los Angeles  
 Ms. 43, recto (91.MS.81.recto)

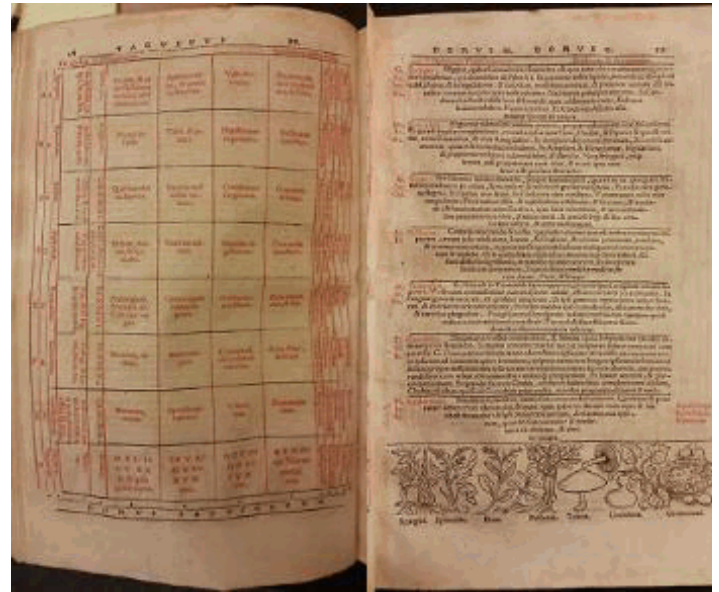


16. Workshop of Gerard Horenbout  
 Flemish, 1465 - 1541, active 1487 - about 1520  
[Initial O: A Woman Receiving Communion](#), about 1500  
 from Book of Hours  
 Tempera colors and gold paint on parchment  
 Leaf: 15.2 x 11.1 cm (6 x 4 3/8 in.)  
 The J. Paul Getty Museum, Los Angeles  
 Ms. Ludwig IX 17, fol. 113v (83.ML.113.113v)

17. Master of James IV of Scotland  
 Flemish, before 1465 - about 1541  
 Unknown  
[The Feast of Dives](#), about 1510 - 1520  
 from Spinola Hours  
 Tempera colors, gold, and ink on parchment  
 Leaf: 23.2 x 16.7 cm (9 1/8 x 6 9/16 in.)  
 The J. Paul Getty Museum, Los Angeles  
 Ms. Ludwig IX 18, fol. 21v (83.ML.114.21v)



18. Master of James IV of Scotland  
 Flemish, before 1465 - about 1541  
 Unknown  
 Harvest Scene, before 1340  
 from Spinola Hours  
 Tempera colors, gold, and ink on parchment  
 Leaf: 23.2 x 16.7 cm (9 1/8 x 6 9/16 in.)  
 The J. Paul Getty Museum, Los Angeles  
 Ms. Ludwig IX 18, fol. 22 (83.ML.114.22)



19. Unknown  
 [Asparagus, Spinach, Beet, Parsnip, Mushroom, Squash,  
 Cabbage], 1531  
 Woodcut  
 Closed: 30.6 x 20.7 x 2.5 cm (12 1/16 x 8 1/8 x 1 in.)  
 The Getty Research Institute  
 2868-615



