

Ten Years of Drawings: What, How, and Why

January 29 to May 4, 2008

The J. Paul Getty Museum at the Getty Center



1. Upper Rhenish Master
German, active about 1470 - 1490
[Christ as the Gardener](#), about 1470 - 1490
Pen and gray-black ink
24.1 x 10.8 cm (9 1/2 x 4 1/4 in.)
The J. Paul Getty Museum, Los Angeles
2003.11



2. After The Master of the Housebook
German, active about 1470 - 1500
[Design for a Quatrefoil with a Castle, Two Lovers, a Maiden Tempted by a Fool, a Couple Seated by a Trough, and a Knight and His Lover Mounted on a Horse](#), about 1475 - 1490
Pen and black ink
24.1 x 21.7 cm (9 1/2 x 8 9/16 in.)
The J. Paul Getty Museum, Los Angeles
2005.39



3. Fra Bartolommeo (Baccio della Porta)
Italian, 1472 - 1517
[Three Studies of Trees](#), about 1508
Black chalk, brush and brown ink, brown wash
40.8 x 27.5 cm (16 1/16 x 10 13/16 in.)
The J. Paul Getty Museum, Los Angeles
2001.9



4. Master H.B.
German, active Early 16th century
[Saint Andrew](#), about 1530
Pen and brown ink and grey wash
21.1 x 15.5 cm (8 5/16 x 6 1/8 in.)
The J. Paul Getty Museum, Los Angeles
2007.22



5. Heinrich Aldegrever
German, 1502 - about 1561
[Lazarus Begging for Crumbs from Dives's Table](#), 1552
Pen and brown ink, brown wash, traces of black chalk,
incised for transfer
7.8 x 10.8 cm (3 1/16 x 4 1/4 in.)
The J. Paul Getty Museum, Los Angeles
2000.7



6. Attributed to L'Anonyme Lécureux
French, active 1555 - 1581
[Portrait of a bearded man, half-length, wearing a slashed doublet](#), about 1575
Black and red chalk
33 x 22.2 cm (13 x 8 3/4 in.)
The J. Paul Getty Museum, Los Angeles
2003.10



7. Cristoforo Roncalli (Il Pomarancio)
Italian, 1552 - 1626
[An Angel Holding a Book \(recto\); Three Studies of a Falling Male Figure \(verso\)](#), about 1583 - 1586
Red and black chalk on blue paper
36.5 x 26 cm (14 3/8 x 10 1/4 in.)
The J. Paul Getty Museum, Los Angeles
2001.60



8. Federico Zuccaro
Italian, about 1541 - 1609
[Taddeo Decorating the Façade of the Palazzo Mattei](#),
about 1595
Pen and brown ink, brush with brown wash, over black
chalk and touches of red chalk
25 x 42.2 cm (9 7/8 x 16 5/8 in.)
The J. Paul Getty Museum, Los Angeles
99.GA.6.19



9. Abraham Bloemaert
Dutch, 1564 - 1651
[View of a Farm Courtyard \(recto\), Study of a Tree \(verso\)](#), about 1600
Black chalk, pen and brown ink, brown wash,
watercolor (recto), black chalk, pen and black ink, grey
wash
23.6 x 33.8 cm (9 5/16 x 13 5/16 in.)
The J. Paul Getty Museum, Los Angeles
2007.21



10. Lucas Achtschellinck
Flemish, 1626 - 1699
[A Wooded Landscape with a Path to a House](#), about
1640 - 1650
Pen and brown and gray ink, and watercolor over black
chalk
36.2 x 31.8 cm (14 1/4 x 12 1/2 in.)
The J. Paul Getty Museum, Los Angeles
2004.81



11. Jacob Jordaens
Flemish, 1593 - 1678
[A Merry Company](#), about 1644
Watercolor over black chalk, heightened with white gouache
Unframed: 21.9 x 23.8 cm (8 5/8 x 9 3/8 in.)
The J. Paul Getty Museum, Los Angeles
2000.59



12. Giovanni Benedetto Castiglione
Italian, 1609 - 1664
[A Family of Shepherds](#), Late 1640s
Brush and colored oil paint, over traces of black chalk
35.2 x 48.7 cm (13 7/8 x 19 3/16 in.)
The J. Paul Getty Museum, Los Angeles
2000.38



13. Juan Carreño de Miranda
Spanish, 1614 - 1685
[Christ Baptized](#), about 1682
Charcoal, red and white chalk, with stumping
35.2 x 20 cm (13 7/8 x 7 7/8 in.)
The J. Paul Getty Museum, Los Angeles
2003.24



14. Rosalba Carriera
Italian, 1675 - 1757
[A Muse](#), Mid-1720s
Pastel on laid blue paper
31 x 26 cm (12 3/16 x 10 1/4 in.)
The J. Paul Getty Museum, Los Angeles
2003.17



15. Giovanni Battista Tiepolo
Italian, 1696 - 1770
[Punchinellos Approaching a Woman](#), Late 1730s
Pen and brown ink and brush with brown wash over black chalk
Unframed: 18.4 x 14 cm (7 1/4 x 5 1/2 in.)
The J. Paul Getty Museum, Los Angeles
2003.131



16. Canaletto (Giovanni Antonio Canal)
Italian, 1697 - 1768
[Recto: The Campo S. Basso: The North Side with the Church; Verso: A Market Scene](#), 1740s
Pen and brown ink, over black chalk
43.2 x 29.2 cm (17 x 11 1/2 in.)
The J. Paul Getty Museum, Los Angeles
2000.9



17. François Boucher
French, 1703 - 1770
[The Birth and Triumph of Venus](#), about 1743
Black chalk and gouache
39 x 31 cm (15 3/8 x 12 3/16 in.)
The J. Paul Getty Museum, Los Angeles
2005.16



18. Francesco Guardi
Italian, 1712 - 1793
[An Imaginary View of a Venetian Lagoon, with a Fortress by the Shore](#), about 1750 - 1755
Pen and brown ink, brown wash, and little traces of underdrawing in black chalk
26.7 x 41.3 cm (10 1/2 x 16 1/4 in.)
The J. Paul Getty Museum, Los Angeles
2002.36



19. Giovanni Battista Tiepolo
Italian, 1696 - 1770
[Head of a Man Looking Up](#), about 1750 - 1760
Red and white chalk on blue laid paper
21.1 x 15.2 cm (8 5/16 x 6 in.)
The J. Paul Getty Museum, Los Angeles
2002.31



20. Maurice-Quentin Delatour
French, 1704 - 1788
[Portrait of Louis de Silvestre](#), about 1753
Black and white chalk, blue and rose pastel on faded blue paper
32.5 x 21.4 cm (12 13/16 x 8 7/16 in.)
The J. Paul Getty Museum, Los Angeles
2002.50



21. Jean-Étienne Liotard
Swiss, 1702 - 1789
[Portrait of a Woman](#), 1758 - 1762
Black, white and traces of red chalk on blue paper
62.2 x 50.8 cm (24 1/2 x 20 in.)
The J. Paul Getty Museum, Los Angeles
2002.22



22. Giovanni Battista Piranesi
Italian, 1720 - 1778
[Four Studies of a Male Figure](#), 1760 - 1765
Pen and brown ink and brown wash, traces of black chalk
25 x 17.3 cm (9 13/16 x 6 13/16 in.)
The J. Paul Getty Museum, Los Angeles
99.GG.34



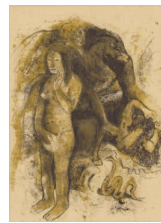
23. Giovanni Domenico Tiepolo
Italian, 1727 - 1804
[Christ at Supper with Simon the Pharisee, with the Anointment of Christ's Feet by Mary Magdalen](#), about 1785
Pen and brown and gray ink, brush with brown and gray wash, over black chalk
48.6 x 37.5 cm (19 1/8 x 14 3/4 in.)
The J. Paul Getty Museum, Los Angeles
2001.83



24. Hendrik Meyer
Dutch, 1744 - 1793
[A Winter Scene](#), 1787
Black chalk, pen and brown ink, gouache, pen and black ink framing lines
37.1 x 48.3 cm (14 5/8 x 19 in.)
The J. Paul Getty Museum, Los Angeles
2004.46.2



25. Georges Seurat
French, 1859 - 1891
[Madame Seurat, the Artist's Mother \(Madame Seurat, mère\)](#), about 1882 - 1883
Conté crayon on Michallet paper
30.5 x 23.3 cm (12 x 9 3/16 in.)
The J. Paul Getty Museum, Los Angeles
2002.51



26. Paul Gauguin
French, 1848 - 1903
[Eve \('The Nightmare'\)](#), about 1899 - 1900
Black printer's ink, ochre ink, liquid solvent (turpentine?) on wove paper (recto); Graphite and blue crayon pencil with traces of a diluted oil medium (verso)
64.2 x 48.9 cm (25 1/4 x 19 1/4 in.)
The J. Paul Getty Museum, Los Angeles
2007.33



The J. Paul Getty Museum

October 16, 2008

Additional information about some of these works of art can be found by searching getty.edu at <http://www.getty.edu/art/gettyguide/>

© 2008 J. Paul Getty Trust