

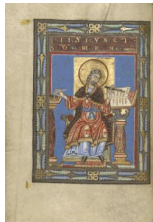
Heaven and Earth: Byzantine Illumination at the Cultural Crossroads

March 25 to June 22, 2014

The J. Paul Getty Museum at the Getty Center

1. Unknown

Decorated Text Page, early 800s
Bifolium from a Gospel Lectionary (fols. 2 and 3)
Tempera colors and gold and silver paint on parchment;
fols. 1 - 4 stained purple; disbound
Leaf: 24.1 x 18.1 cm (9 1/2 x 7 1/8 in.)
Ms. Ludwig IV 1, fol. 2 (83.MD.73.2.2.recto)



2. Unknown

Decorated Text Page, early 800s
Bifolium from a Gospel Lectionary (fols. 2 and 3)
Tempera colors and gold and silver paint on parchment;
fols. 1 - 4 stained purple; disbound
Leaf: 24.1 x 18.1 cm (9 1/2 x 7 1/8 in.)
Ms. Ludwig IV 1, fol. 3v (83.MD.73.2.3.verso)



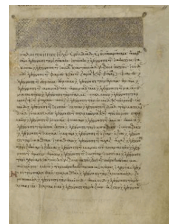
3. Unknown

[Saint Mark](#), about 1120-40
from [Gospel Book](#)
Tempera colors, gold, and silver on parchment
Leaf: 22.9 x 16.5 cm (9 x 6 1/2 in.)
Ms. Ludwig II 3, fol. 51v (83.MB.67.51v)



4. Unknown

[Decorated Incipit Page](#), about 1120 - 40
from [Gospel Book](#)
Tempera colors, gold, and silver on parchment
Leaf: 22.9 x 16.5 cm (9 x 6 1/2 in.)
Ms. Ludwig II 3, fol. 52 (83.MB.67.52)



5. Unknown

[Saint Matthew](#), 1133
from [New Testament](#)
Tempera colors, gold leaf, gold paint, and ink on
parchment
Leaf: 22.1 x 18.1 cm (8 11/16 x 7 1/8 in.)
Ms. Ludwig II 4, fol. 10v (83.MB.68.10v)

6. Unknown

[Decorated Text Page](#), 1133
from [New Testament](#)
Tempera colors, gold leaf, gold paint, and ink on
parchment
Leaf: 22.1 x 18.1 cm (8 11/16 x 7 1/8 in.)
Ms. Ludwig II 4, fol. 11 (83.MB.68.11)

June 9, 2014

Additional information about some of these works of art can be found by searching getty.edu at <http://www.getty.edu/art/gettyguide/>



7. Unknown

[Initial I: The Virgin and Child](#), about 1250-62
from [Abbey Bible](#)

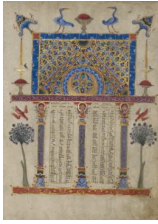
Tempera and gold leaf on parchment
Leaf: 26.8 x 19.7 cm (10 9/16 x 7 3/4 in.)
Ms. 107, fol. 194v (2011.23.194v)



8.

[Text Page](#), about 1250-62
from [Abbey Bible](#)

Tempera and gold leaf on parchment
Leaf: 26.8 x 19.7 cm (10 9/16 x 7 3/4 in.)
Ms. 107, fol. 195 (2011.23.195)

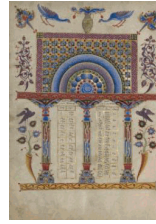


9. T'oros Roslin

Armenian, active 1256 - 1268

[Canon Table Pages](#), 1256

Tempera and gold paint on parchment
Leaf: 26.5 x 19 cm (10 7/16 x 7 1/2 in.)
Ms. 59, fol. 2 (94.MB.71.2.2.recto)



10. T'oros Roslin

Armenian, active 1256 - 1268

[Canon Table Pages](#), 1256

Tempera and gold paint on parchment
Leaf: 26.5 x 19 cm (10 7/16 x 7 1/2 in.)
Ms. 59, fol. 7v (94.MB.71.2.7.verso)



11. Unknown

[Saint Luke](#), late 1200s

from [Gospel Book](#)

Tempera colors, gold leaf, gold ink, and ink on parchment

Leaf: 21 x 14.9 cm (8 1/4 x 5 7/8 in.)
Ms. 65, fol. 159v (98.MB.151.159v)



12. Unknown

[Decorated Text Page](#), late 1200s

from [Gospel Book](#)

Tempera colors, gold leaf, gold ink, and ink on parchment

Leaf: 21 x 14.9 cm (8 1/4 x 5 7/8 in.)
Ms. 65, fol. 160 (98.MB.151.160)



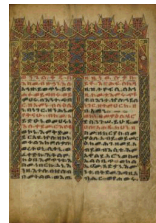
13. Unknown

[Saint Luke](#), about 1480-1520

from [Gospel Book](#)

Tempera on parchment

Leaf: 34.5 x 25.6 cm (13 9/16 x 10 1/16 in.)
Ms. 105, fol. 116v (2010.17.116v)



14. Unknown

[Decorated Incipit Page](#), about 1480 - 1520

from [Gospel Book](#)

Tempera on parchment

Leaf: 34.5 x 25.6 cm (13 9/16 x 10 1/16 in.)
Ms. 105, fol. 117 (2010.17.117)



15. Unknown

[The Virgin and Child](#), probably about 1504-5
from [Gospel Book](#)

Tempera on parchment

Leaf: 34.5 x 26.5 cm (13 9/16 x 10 7/16 in.)

Ms. 102, fol. 19v (2008.15.19v)



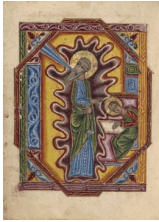
16. Unknown

[Canon Table Page](#), probably about 1504-5
from [Gospel Book](#)

Tempera on parchment

Leaf: 34.5 x 26.5 cm (13 9/16 x 10 7/16 in.)

Ms. 102, fol. 20 (2008.15.20)



17. Mesrop of Khizan

Armenian, active 1605 - 1651

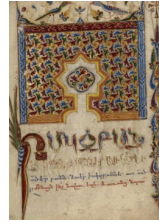
Saint John, 1615

from [Gospel Book](#)

Tempera colors, gold paint, and gold leaf on glazed paper

Leaf: 23 x 17.1 cm (9 1/16 x 6 3/4 in.)

Ms. Ludwig II 7, fol. 193v (83.MB.71.193v)



18. Mesrop of Khizan

Armenian, active 1605 - 1651

Decorated Incipit Page, 1615

from [Gospel Book](#)

Tempera colors, gold paint, and gold leaf on glazed paper

Leaf: 23 x 17.1 cm (9 1/16 x 6 3/4 in.)

Ms. Ludwig II 7, fol. 194 (83.MB.71.194)



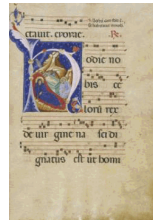
19. Unknown

[The Presentation in the Temple](#), late 1200s
from [Gospel Book](#)

Tempera colors and gold leaf on parchment

Leaf: 20.6 x 14.9 cm (8 1/8 x 5 7/8 in.)

Ms. Ludwig II 5, fol. 129v (83.MB.69.129v)



20. Master of Gerona

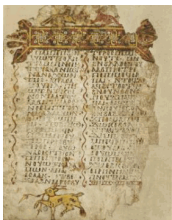
Italian, active about 1300

[Initial H: The Nativity](#), late 1200s
from [Antiphonal](#)

Tempera colors, gold leaf, and ink on parchment

Leaf: 58.3 x 40.2 cm (22 15/16 x 15 13/16 in.)

Ms. Ludwig VI 6, fol. 94 (83.MH.89.94)



21. Unknown

Decorated Text Page, 900s

Leaf from [Life of Apa Samuel](#)

Tempera colors and ink on parchment

Leaf: 34.9 x 25.4 cm (13 3/4 x 10 in.)

Ms. 12, recto (85.MS.119.recto)

June 9, 2014

Additional information about some of these works of art can be found by searching [getty.edu](http://www.getty.edu/art/gettyguide/) at <http://www.getty.edu/art/gettyguide/>

© 2014 J. Paul Getty Trust