

OBJECT LIST

BREAKING NEWS: TURNING THE LENS ON MASS MEDIA

At the J. Paul Getty Museum, Getty Center
December 20, 2016-April 30, 2017



1. Donald R. Blumberg
American, born 1935
Untitled, from the series *Daily Photographs, 1969-1970, 1969-1970*
Gelatin silver print
Framed (approx.): 61 x 71.1 cm (24 x 28 in.)
The J. Paul Getty Museum, Los Angeles, Gift in honor of the artist, 2008.90.3
© Donald Blumberg



2. Donald R. Blumberg
American, born 1935
Untitled, from the series *Daily Photographs, 1969-1970, 1969-1970*
Gelatin silver print
Framed (approx.): 61 x 71.1 cm (24 x 28 in.)
The J. Paul Getty Museum, Los Angeles, Gift in honor of the artist, 2008.90.2
© Donald Blumberg



3. Donald R. Blumberg
American, born 1935
Untitled, from the series *Daily Photographs, 1969-1970, 1969-1970*
Gelatin silver print
Framed (approx.): 61 x 71.1 cm (24 x 28 in.)
The J. Paul Getty Museum, Los Angeles, Gift in honor of the artist, 2008.90.1
© Donald Blumberg



4. Donald R. Blumberg
American, born 1935
Untitled, from the series *Daily Photographs, 1969-1970, 1969-1970*
Gelatin silver print
Framed (approx.): 61 x 71.1 cm (24 x 28 in.)
The J. Paul Getty Museum, Los Angeles, Gift in honor of the artist, 2008.90.5
© Donald Blumberg

TURNING THE LENS ON MASS MEDIA



5. Donald R. Blumberg
American, born 1935
Untitled, from the series *Daily Photographs, 1969-1970, 1969-1970*
Gelatin silver print
Framed (approx.): 61 x 71.1 cm (24 x 28 in.)
The J. Paul Getty Museum, Los Angeles, Gift in honor of the artist, 2008.90.6
© Donald Blumberg



6. Donald R. Blumberg
American, born 1935
Untitled, from the series *Daily Photographs, 1969-1970, 1969-1970*
Gelatin silver print
Framed (approx.): 61 x 71.1 cm (24 x 28 in.)
The J. Paul Getty Museum, Los Angeles, Gift in honor of the artist, 2009.4.3
© Donald Blumberg



7. Donald R. Blumberg
American, born 1935
Untitled, from the series *Daily Photographs, 1969-1970, 1969-1970*
Gelatin silver print
Framed (approx.): 61 x 71.1 cm (24 x 28 in.)
The J. Paul Getty Museum, Los Angeles, Gift in honor of the artist, 2008.90.7
© Donald Blumberg



8. Donald R. Blumberg
American, born 1935
Untitled, from the series *Daily Photographs, 1969-1970, 1969-1970*
Gelatin silver print
Framed (approx.): 61 x 71.1 cm (24 x 28 in.)
The J. Paul Getty Museum, Los Angeles, Gift in honor of the artist, 2009.4.4
© Donald Blumberg



9. Donald R. Blumberg
American, born 1935
Untitled, from the series *Daily Photographs, 1969-1970, 1969-1970*
Gelatin silver print
Framed (approx.): 61 x 71.1 cm (24 x 28 in.)
The J. Paul Getty Museum, Los Angeles, Gift in honor of the artist, 2008.90.8
© Donald Blumberg



10. Donald R. Blumberg
American, born 1935
Untitled, from the series *Daily Photographs, 1969-1970, 1969-1970*
Gelatin silver print
Framed (approx.): 61 x 71.1 cm (24 x 28 in.)
The J. Paul Getty Museum, Los Angeles, Gift in honor of the artist, 2008.90.10
© Donald Blumberg

TURNING THE LENS ON MASS MEDIA



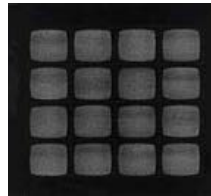
11. Donald R. Blumberg
American, born 1935
Untitled, from the series *Daily Photographs*, 1969-1970, 1969-1970
Gelatin silver print
Framed (approx.): 61 x 71.1 cm (24 x 28 in.)
The J. Paul Getty Museum, Los Angeles, Gift in honor of the artist, 2008.90.9
© Donald Blumberg



12. Donald R. Blumberg
American, born 1935
Untitled, from the series *Daily Photographs*, 1969-1970, 1969-1970
Gelatin silver print
Framed (approx.): 61 x 71.1 cm (24 x 28 in.)
The J. Paul Getty Museum, Los Angeles, Gift in honor of the artist, 2009.4.10
© Donald Blumberg



13. Donald R. Blumberg
American, born 1935
Untitled, from the series *Daily Photographs*, 1969-1970, 1969-1970
Gelatin silver print
Framed (approx.): 61 x 71.1 cm (24 x 28 in.)
The J. Paul Getty Museum, Los Angeles, Gift in honor of the artist, 2009.4.9
© Donald Blumberg



14. Donald R. Blumberg
American, born 1935
Untitled, from the series *Television Abstractions*, 1968-1969, 1968-1969
Gelatin silver print
Framed (approx.): 61 x 71.1 cm (24 x 28 in.)
Donald R. and Grace Blumberg
© Donald Blumberg
L. 2015.140.1



15. Donald R. Blumberg
American, born 1935
Untitled, from the series *Television Political Mosaics*, 1968-1969, 1968-1969
Gelatin silver print
Framed (approx.): 61 x 71.1 cm (24 x 28 in.)
Donald R. and Grace Blumberg
© Donald Blumberg
L. 2015.139.3



16. Donald R. Blumberg
American, born 1935
Untitled, from the series *Television Political Mosaics*, 1968-1969, 1968-1969
Gelatin silver print
Framed (approx.): 61 x 71.1 cm (24 x 28 in.)
Donald R. and Grace Blumberg
© Donald Blumberg
L. 2015.139.1

TURNING THE LENS ON MASS MEDIA



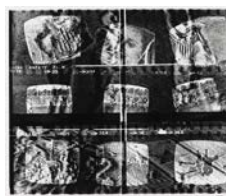
17. Donald R. Blumberg
American, born 1935
Untitled, from the series *Television Political Mosaics, 1968-1969, 1968-1969*
Gelatin silver print
Framed (approx.): 71.1 x 61 cm (28 x 24 in.)
Donald R. and Grace Blumberg
© Donald Blumberg
L. 2015.139.2



18. Donald R. Blumberg
American, born 1935
Untitled, from the series *Television Political Mosaics, 1968-1969, 1968-1969*
Gelatin silver print
Framed (approx.): 71.1 x 61 cm (28 x 24 in.)
Donald R. and Grace Blumberg
© Donald Blumberg
L. 2015.139.4



19. Donald R. Blumberg
American, born 1935
Untitled, from the series *Television Political Mosaics, 1968-1969, 1968-1969*
Gelatin silver print
Framed (approx.): 61 x 71.1 cm (24 x 28 in.)
Donald R. and Grace Blumberg
© Donald Blumberg
L. 2015.139.11



20. Donald R. Blumberg
American, born 1935
Untitled, from the series *Television Abstractions, 1968-1969, 1968-1969*
Gelatin silver print
Framed (approx.): 61 x 71.1 cm (24 x 28 in.)
Donald R. and Grace Blumberg
© Donald Blumberg
L. 2015.141.1

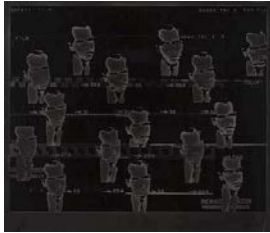


21. Donald R. Blumberg
American, born 1935
Untitled, from the series *Television Political Mosaics, 1968-1969, 1968-1969*
Gelatin silver print
Framed (approx.): 61 x 71.1 cm (24 x 28 in.)
Donald R. and Grace Blumberg
© Donald Blumberg
L. 2015.139.12



22. Donald R. Blumberg
American, born 1935
Untitled, from the series *Television Political Mosaics, 1968-1969, 1968-1969*
Gelatin silver print
Framed (approx.): 61 x 71.1 cm (24 x 28 in.)
Donald R. and Grace Blumberg
© Donald Blumberg
L. 2015.139.13

TURNING THE LENS ON MASS MEDIA



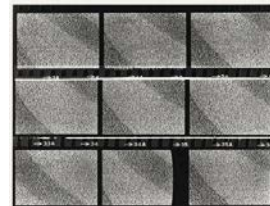
23. Donald R. Blumberg
American, born 1935
Untitled, from the series *Television Political Mosaics*,
1968-1969, 1968-1969
Gelatin silver print
Framed (approx.): 71.1 x 61 cm (28 x 24 in.)
Donald R. and Grace Blumberg
© Donald Blumberg
L. 2015.139.7



24. Donald R. Blumberg
American, born 1935
Untitled, from the series *Television Political Mosaics*,
1968-1969, 1968-1969
Gelatin silver print
Framed (approx.): 61 x 71.1 cm (24 x 28 in.)
Donald R. and Grace Blumberg
© Donald Blumberg
L. 2015.139.8



25. Donald R. Blumberg
American, born 1935
Untitled, from the series *Television Political Mosaics*,
1968-1969, 1968-1969
Gelatin silver print
Framed (approx.): 61 x 71.1 cm (24 x 28 in.)
Donald R. and Grace Blumberg
© Donald Blumberg
L. 2015.139.9



26. Donald R. Blumberg
American, born 1935
Untitled, from the series *Television Abstractions*, 1968-
1969, 1968-1969
Gelatin silver print
Framed (approx.): 61 x 71.1 cm (24 x 28 in.)
Donald R. and Grace Blumberg
© Donald Blumberg
L. 2015.140.2

Thumbnail not available

27. John Baldessari
American, born 1931
*The Meaning of Various Photographs to Ed
Henderson*, 1973
Single-channel video with sound; running time: 13
minutes, 20 seconds
Electronic Arts Intermix
© John Baldessari
EX.2017.4.38

TURNING THE LENS ON MASS MEDIA



28. Martha Rosler
Cleaning the Drapes, from the series *House Beautiful: Bringing the War Home*, c. 1967-1972
Inkjet print
Framed: 53.3 x 63.5 cm (21 x 25 in.)
The Museum of Modern Art, New York, Committee on Photography and The Modern Women's Fund
© Martha Rosler, courtesy of the artist and Mitchell-Innes & Nash, NY
Digital Image © The Museum of Modern Art/Licensed by SCALA / Art Resource, NY
EX.2017.4.4.1



29. Martha Rosler
Balloons, from the series *House Beautiful: Bringing the War Home*, c. 1967-1972
Inkjet print
Framed: 63.5 x 53.3 cm (25 x 21 in.)
The Museum of Modern Art, New York, Committee on Photography and The Modern Women's Fund
© Martha Rosler, courtesy of the artist and Mitchell-Innes & Nash, NY
Digital Image © The Museum of Modern Art/Licensed by SCALA / Art Resource, NY
EX.2017.4.4.2



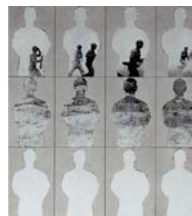
30. Martha Rosler
Beauty Rest, from the series *House Beautiful: Bringing the War Home*, c. 1967-1972
Inkjet print
Framed: 63.5 x 53.3 cm (25 x 21 in.)
The Museum of Modern Art, New York, Committee on Photography and The Modern Women's Fund
© Martha Rosler, courtesy of the artist and Mitchell-Innes & Nash, NY
Digital Image © The Museum of Modern Art/Licensed by SCALA / Art Resource, NY
EX.2017.4.4.3



31. Martha Rosler
Booby Trap, from the series *House Beautiful: Bringing the War Home*, c. 1967-1972
Inkjet print
Framed: 63.5 x 53.3 cm (25 x 21 in.)
The Museum of Modern Art, New York, Committee on Photography and The Modern Women's Fund
© Martha Rosler, courtesy of the artist and Mitchell-Innes & Nash, NY
Digital Image © The Museum of Modern Art/Licensed by SCALA / Art Resource, NY
EX.2017.4.4.4



32. Martha Rosler
Boys' Room, from the series *House Beautiful: Bringing the War Home*, c. 1967-1972
Inkjet print
Framed: 63.5 x 53.3 cm (25 x 21 in.)
The Museum of Modern Art, New York, Committee on Photography and The Modern Women's Fund
© Martha Rosler, courtesy of the artist and Mitchell-Innes & Nash, NY
Digital Image © The Museum of Modern Art/Licensed by SCALA / Art Resource, NY
EX.2017.4.4.5



33. Martha Rosler
Empty Boys, from the series *House Beautiful: Bringing the War Home*, c. 1967-1972
Inkjet print
Framed: 63.5 x 53.3 cm (25 x 21 in.)
The Museum of Modern Art, New York, Committee on Photography and The Modern Women's Fund
© Martha Rosler, courtesy of the artist and Mitchell-Innes & Nash, NY
Digital Image © The Museum of Modern Art/Licensed by SCALA / Art Resource, NY
EX.2017.4.4.6

TURNING THE LENS ON MASS MEDIA



34. Martha Rosler
First Lady (Pat Nixon), from the series *House Beautiful: Bringing the War Home*, c. 1967-1972
Inkjet print
Framed: 53.3 × 63.5 cm (21 × 25 in.)
The Museum of Modern Art, New York, Committee on Photography and The Modern Women's Fund
© Martha Rosler, courtesy of the artist and Mitchell-Innes & Nash, NY
Digital Image © The Museum of Modern Art/Licensed by SCALA / Art Resource, NY EX.2017.4.4.7



35. Martha Rosler
House Beautiful: Giacometti, from the series *House Beautiful: Bringing the War Home*, c. 1967-1972
Inkjet print
Framed: 63.5 × 53.3 cm (25 × 21 in.)
The Museum of Modern Art, New York, Committee on Photography and The Modern Women's Fund
© Martha Rosler, courtesy of the artist and Mitchell-Innes & Nash, NY
Digital Image © The Museum of Modern Art/Licensed by SCALA / Art Resource, NY EX.2017.4.4.9



36. Martha Rosler
Makeup/Hands Up, from the series *House Beautiful: Bringing the War Home*, c. 1967-1972
Inkjet print
Framed: 63.5 × 53.3 cm (25 × 21 in.)
The Museum of Modern Art, New York, Committee on Photography and The Modern Women's Fund
© Martha Rosler, courtesy of the artist and Mitchell-Innes & Nash, NY
Digital Image © The Museum of Modern Art/Licensed by SCALA / Art Resource, NY EX.2017.4.4.10



37. Martha Rosler
Patio View, from the series *House Beautiful: Bringing the War Home*, c. 1967-1972
Inkjet print
Framed: 63.5 × 53.3 cm (25 × 21 in.)
The Museum of Modern Art, New York, Committee on Photography and The Modern Women's Fund
© Martha Rosler, courtesy of the artist and Mitchell-Innes & Nash, NY
Digital Image © The Museum of Modern Art/Licensed by SCALA / Art Resource, NY EX.2017.4.4.11



38. Martha Rosler
Red Stripe Kitchen, from the series *House Beautiful: Bringing the War Home*, c. 1967-1972
Inkjet print
Framed: 63.5 × 53.3 cm (25 × 21 in.)
The Museum of Modern Art, New York, Committee on Photography and The Modern Women's Fund
© Martha Rosler, courtesy of the artist and Mitchell-Innes & Nash, NY
Digital Image © The Museum of Modern Art/Licensed by SCALA / Art Resource, NY EX.2017.4.4.13



39. Martha Rosler
Honors (Striped Burial), from the series *House Beautiful: Bringing the War Home*, c. 1967-1972
Inkjet print
Framed: 53.3 × 63.5 cm (21 × 25 in.)
The Museum of Modern Art, New York, Committee on Photography and The Modern Women's Fund
© Martha Rosler, courtesy of the artist and Mitchell-Innes & Nash, NY
Digital Image © The Museum of Modern Art/Licensed by SCALA / Art Resource, NY EX.2017.4.4.8

TURNING THE LENS ON MASS MEDIA



40. Martha Rosler
Playboy (On View), from the series *House Beautiful: Bringing the War Home*, c. 1967-1972
Inkjet print
Framed: 63.5 × 53.3 cm (25 × 21 in.)
The Museum of Modern Art, New York, Committee on Photography and The Modern Women's Fund
© Martha Rosler, courtesy of the artist and Mitchell-Innes & Nash, NY
Digital Image © The Museum of Modern Art/Licensed by SCALA / Art Resource, NY
EX.2017.4.4.12



41. Martha Rosler
Roadside Ambush, from the series *House Beautiful: Bringing the War Home*, c. 1967-1972
Inkjet print
Framed: 53.3 × 63.5 cm (21 × 25 in.)
The Museum of Modern Art, New York, Committee on Photography and The Modern Women's Fund
© Martha Rosler, courtesy of the artist and Mitchell-Innes & Nash, NY
Digital Image © The Museum of Modern Art/Licensed by SCALA / Art Resource, NY
EX.2017.4.4.14



42. Martha Rosler
Runway, from the series *House Beautiful: Bringing the War Home*, c. 1967-1972
Inkjet print
Framed: 53.3 × 63.5 cm (21 × 25 in.)
The Museum of Modern Art, New York, Committee on Photography and The Modern Women's Fund
© Martha Rosler, courtesy of the artist and Mitchell-Innes & Nash, NY
Digital Image © The Museum of Modern Art/Licensed by SCALA / Art Resource, NY
EX.2017.4.4.15



43. Martha Rosler
Scatter, from the series *House Beautiful: Bringing the War Home*, c. 1967-1972
Inkjet print
Framed: 53.3 × 63.5 cm (21 × 25 in.)
The Museum of Modern Art, New York, Committee on Photography and The Modern Women's Fund
© Martha Rosler, courtesy of the artist and Mitchell-Innes & Nash, NY
Digital Image © The Museum of Modern Art/Licensed by SCALA / Art Resource, NY
EX.2017.4.4.16



44. Martha Rosler
Tract House Soldier, from the series *House Beautiful: Bringing the War Home*, c. 1967-1972
Inkjet print
Framed: 53.3 × 63.5 cm (21 × 25 in.)
The Museum of Modern Art, New York, Committee on Photography and The Modern Women's Fund
© Martha Rosler, courtesy of the artist and Mitchell-Innes & Nash, NY
Digital Image © The Museum of Modern Art/Licensed by SCALA / Art Resource, NY
EX.2017.4.4.17



45. Martha Rosler
Tron (Amputee), from the series *House Beautiful: Bringing the War Home*, c. 1967-1972
Inkjet print
Framed: 63.5 × 53.3 cm (25 × 21 in.)
The Museum of Modern Art, New York, Committee on Photography and The Modern Women's Fund
© Martha Rosler, courtesy of the artist and Mitchell-Innes & Nash, NY
Digital Image © The Museum of Modern Art/Licensed by SCALA / Art Resource, NY
EX.2017.4.4.18

TURNING THE LENS ON MASS MEDIA



46. Martha Rosler

Vacation Getaway, from the series *House Beautiful: Bringing the War Home*, c. 1967-1972
Inkjet print
Framed: 53.3 x 63.5 cm (21 x 25 in.)
The Museum of Modern Art, New York, Committee on Photography and The Modern Women's Fund
© Martha Rosler, courtesy of the artist and Mitchell-Innes & Nash, NY
Digital Image © The Museum of Modern Art/Licensed by SCALA / Art Resource, NY
EX.2017.4.4.19



47. Martha Rosler

Woman with Cannon (Dots), from the series *House Beautiful: Bringing the War Home*, c. 1967-1972
Inkjet print
Framed: 63.5 x 53.3 cm (25 x 21 in.)
The Museum of Modern Art, New York, Committee on Photography and The Modern Women's Fund
© Martha Rosler, courtesy of the artist and Mitchell-Innes & Nash, NY
Digital Image © The Museum of Modern Art/Licensed by SCALA / Art Resource, NY
EX.2017.4.4.20

Thumbnail not available

48. David Lamelas and Hildegarde Duane

American, born Argentina, 1946; American, born 1950
The Dictator, 1978
Single-channel video with sound; running time 15 minutes
The Getty Research Institute
© David Lamelas courtesy of the artist and Maccarone, New York/Los Angeles
2006.M.7.29

TURNING THE LENS ON MASS MEDIA



49. Masao Mochizuki
Japanese, born 1939
The Mummy From Peru, from the series *Television*,
1975-1976
Gelatin silver print
Framed: 50 × 38 cm (20 × 15 in.)
Gloria Katz and Willard Huyck Collection
© Masao Mochizuki, courtesy of Osiris
EX.2017.4.8.4



50. Masao Mochizuki
Japanese, born 1939
Typhoon, from the series *Television*, 1975-1976
Gelatin silver print
Framed: 50 × 38 cm (20 × 15 in.)
Gloria Katz and Willard Huyck Collection
© Masao Mochizuki, courtesy of Osiris
EX.2017.4.8.5



51. Masao Mochizuki
Japanese, born 1939
One Year For the Quintuplets, from the series
Television, 1975-1976
Gelatin silver print
Framed: 50 × 38 cm (20 × 15 in.)
Gloria Katz and Willard Huyck Collection
© Masao Mochizuki, courtesy of Osiris
EX.2017.4.8.1



52. Masao Mochizuki
Japanese, born 1939
The Air Power of the World, from the series
Television, 1975-1976
Gelatin silver print
Framed: 38 × 50 cm (15 × 20 in.)
Wilson Centre for Photography
© Masao Mochizuki, courtesy of Osiris
EX.2017.4.19.1



53. Masao Mochizuki
Japanese, born 1939
The Siemens Affair, from the series *Television*, 1975-
1976
Gelatin silver print
Framed: 50 × 38 cm (20 × 15 in.)
Gloria Katz and Willard Huyck Collection
© Masao Mochizuki, courtesy of Osiris
EX.2017.4.8.3



54. Masao Mochizuki
Japanese, born 1939
The World of Salvador Dali, from the series
Television, 1975-1976
Gelatin silver print
Framed: 38 × 50 cm (15 × 20 in.)
Wilson Centre for Photography
© Masao Mochizuki, courtesy of Osiris
EX.2017.4.19.5

TURNING THE LENS ON MASS MEDIA



55. Masao Mochizuki
Japanese, born 1939
The Gossip Shows, from the series *Television*, 1975-1976
Gelatin silver print
Framed: 50 × 38 cm (20 × 15 in.)
Wilson Centre for Photography
© Masao Mochizuki, courtesy of Osiris
EX.2017.4.19.3



56. Masao Mochizuki
Japanese, born 1939
The 42nd Japan Derby, from the series *Television*, 1975-1976
Gelatin silver print
Framed: 38 × 50 cm (15 × 20 in.)
Wilson Centre for Photography
© Masao Mochizuki, courtesy of Osiris
EX.2017.4.19.2



57. Masao Mochizuki
Japanese, born 1939
Japanese Woman Team Conquers Mt. Everest, from the series *Television*, 1975-1976
Gelatin silver print
Framed: 50 × 38 cm (20 × 15 in.)
Mona and Anthony E. Nicholas
© Masao Mochizuki, courtesy of Osiris
EX.2017.4.9.1



58. Masao Mochizuki
Japanese, born 1939
Hiroshima Tokyo Cup, from the series *Television*, 1975-1976
Gelatin silver print
Framed: 38 × 50 cm (15 × 20 in.)
Wilson Centre for Photography
© Masao Mochizuki, courtesy of Osiris
EX.2017.4.19.4



59. Masao Mochizuki
Japanese, born 1939
Bank Robbery, from the series *Television*, 1975-1976
Gelatin silver print
Framed: 50 × 38 cm (20 × 15 in.)
Gloria Katz and Willard Huyck Collection
© Masao Mochizuki, courtesy of Osiris
EX.2017.4.20



60. Masao Mochizuki
Japanese, born 1939
About the Case of 300 Million Yen Robbed, from the series *Television*, 1975-1976
Gelatin silver print
Framed: 50 × 38 cm (20 × 15 in.)
Mona and Anthony E. Nicholas
© Masao Mochizuki, courtesy of Osiris
EX.2017.4.9.2

BREAKING NEWS

TURNING THE LENS ON MASS MEDIA



Thumbnail not available

- 61. Masao Mochizuki
Japanese, born 1939
The Great Sakata Fire, from the series *Television*,
1975-1976
Gelatin silver print
Framed: 50 x 38 cm (20 x 15 in.)
Gloria Katz and Willard Huyck Collection
© Masao Mochizuki, courtesy of Osiris
EX.2017.4.8.2

- 62. Masao Mochizuki
Japanese, born 1939
Television 1976-1976, from the series *Television*,
2001
Bound volume with halftone reproductions
Closed: 37.5 x 37.5 x 1.9 cm (14 3/4 x 14 3/4 x 3/4
in.)
The Getty Research Institute, 2804-657
© Masao Mochizuki

Thumbnail not available

Thumbnail not available

- 63. Dara Birnbaum and Dan Graham
American, born 1946; American, born 1942
Local TV News Analysis, 1980
Single-channel video with sound; running time 61
minutes, 8 seconds
Electronic Arts Intermix
EX.2017.4.39

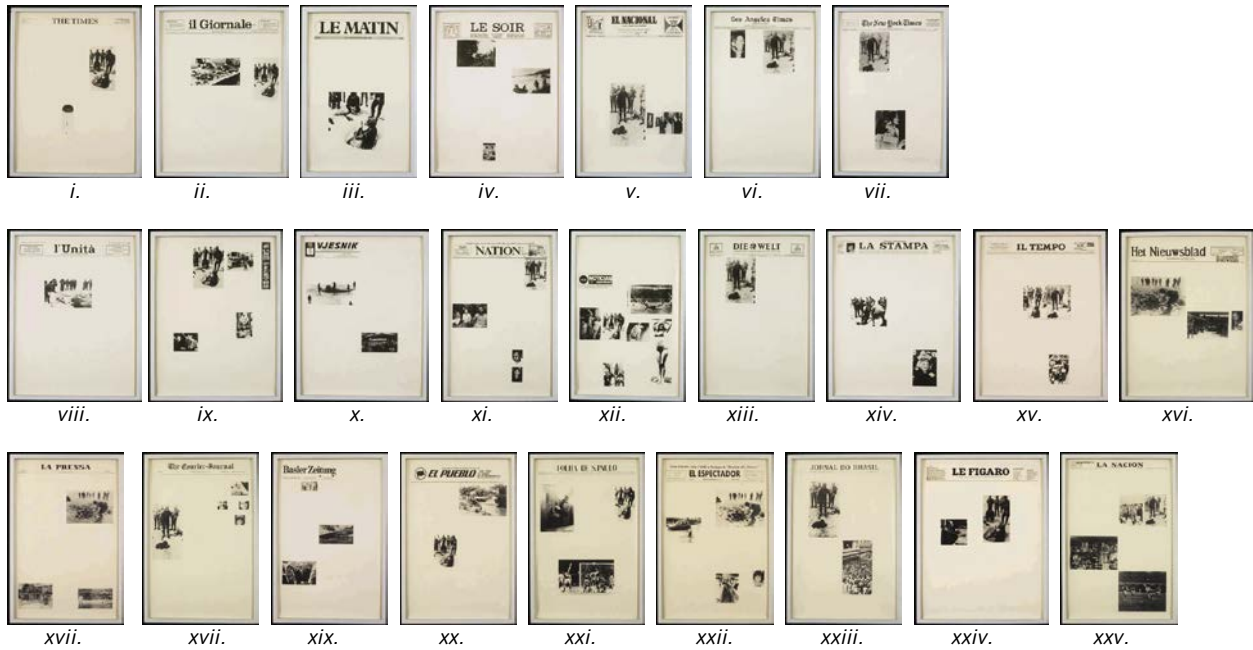


- 64. Sarah Charlesworth
American, 1947-2013
Osservatore Romano, March 17 - May 10, 1978
Electrophotographic prints
Sheet (each): 53 x 39 cm (20 7/8 x 15 3/8 in.)
The J. Paul Getty Museum, Los Angeles
© Sarah Charlesworth
2013.5.1 - .27



BREAKING NEWS

TURNING THE LENS ON MASS MEDIA



65. Sarah Charlesworth
American, 1947 - 2013
April 20, 1978, 1978
Electrophotographic prints
Framed (each): 62.9 × 47 cm (24 3/4 × 18 1/2 in.)
Collection of Peter Norton
© Sarah Charlesworth
EX. 2017. 4.2.1 - .25



66. Catherine Opie
American, born 1961
Terry Schiavo and Pope John Paul, 2004-2005
Dye diffusion prints
Framed: 39.4 × 35.6 cm (15 1/2 × 14 in.)
Courtesy of the Artist and Regen Projects, Los Angeles
© Catherine Opie, Courtesy Regen Projects, Los Angeles
EX.2017.4.11.2



67. Catherine Opie
American, born 1961
A Religious Experience Terry Schiavo, 2004
Dye diffusion print
Framed: 27.6 × 25.4 cm (10 7/8 × 10 in.)
Courtesy of the Artist and Regen Projects, Los Angeles
© Catherine Opie, Courtesy Regen Projects, Los Angeles
EX.2017.4.11.6

TURNING THE LENS ON MASS MEDIA



68. Catherine Opie
American, born 1961
Judge Roberts Confirmation, 2005
Dye diffusion prints
Framed: 27.6 × 44.8 cm (10 7/8 × 17 5/8 in.)
Courtesy of the Artist and Regen Projects, Los Angeles
© Catherine Opie, Courtesy Regen Projects, Los Angeles
EX.2017.4.11.8



69. Catherine Opie
American, born 1961
The Evening News, 2005
Dye diffusion prints
Framed: 27.9 × 54.6 cm (11 × 21 1/2 in.)
Courtesy of the Artist and Regen Projects, Los Angeles
© Catherine Opie, Courtesy Regen Projects, Los Angeles
EX.2017.4.11.3



70. Catherine Opie
American, born 1961
Debate 2004 John Kerry, 2004
Dye diffusion print
Framed: 27.6 × 25.4 cm (10 7/8 × 10 in.)
Courtesy of the Artist and Regen Projects, Los Angeles
© Catherine Opie, Courtesy Regen Projects, Los Angeles
EX.2017.4.11.4



71. Catherine Opie
American, born 1961
Days, Thumbs Up, and Judge Dykes, 2004–2005
Dye diffusion prints
Framed: 27.9 × 45.1 cm (11 × 17 3/4 in.)
Courtesy of the Artist and Regen Projects, Los Angeles
© Catherine Opie, Courtesy Regen Projects, Los Angeles
EX.2017.4.11.1



72. Catherine Opie
American, born 1961
Purple Finger, 2005
Dye diffusion prints
Framed: 27.9 × 44.5 cm (11 × 17 1/2 in.)
Courtesy of the Artist and Regen Projects, Los Angeles
© Catherine Opie, Courtesy Regen Projects, Los Angeles
EX.2017.4.11.9



73. Catherine Opie
American, born 1961
Debate 2004, 2004
Dye diffusion prints
Framed: 44.5 × 50.8 cm (17 1/2 × 20 in.)
Courtesy of the Artist and Regen Projects, Los Angeles
© Catherine Opie, Courtesy Regen Projects, Los Angeles
EX.2017.4.11.5

TURNING THE LENS ON MASS MEDIA



Thumbnail not available

74. Catherine Opie
American, born 1961
Bush Smiling, Help Us, 2005
Dye diffusion prints
Framed: 27.9 × 35.6 cm (11 × 14 in.)
Courtesy of the Artist and Regen Projects, Los Angeles
© Catherine Opie, Courtesy Regen Projects, Los Angeles
EX.2017.4.11.7

75. Antoni Muntadas
Spanish, born 1942
Watching the Press/Reading Television, 1981
Single-channel video with sound; running time: 11 minutes, 20 seconds
Electronic Arts Intermix
© Antoni Muntadas
EX.2017.4.12

Thumbnail not available

Thumbnail not available

76. Antoni Muntadas
Spanish, born 1942
Cross-Cultural Television, 1987
Single-channel video with sound; running time: 35 minutes
Electronic Arts Intermix
© Antoni Muntadas
EX.2017.4.13

77. Antoni Muntadas
Spanish, born 1942
Video is Television?, 1989
Single-channel video with sound; running time: 5 minutes, 34 seconds
Electronic Arts Intermix
© Antoni Muntadas
EX.2017.4.14



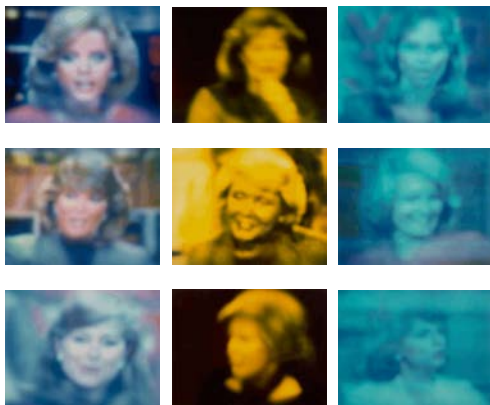
78. Robert Heinecken
American, 1931 – 2006
TV Newswomen (Faith Daniels and Barbara Walters), 1986
Cibachrome silver-dye bleach print
Framed: 198.1 × 96.5 cm (78 × 38 in.)
The J. Paul Getty Museum, Los Angeles
© The Robert Heinecken Trust
2010.36.1 - .12

BREAKING NEWS

TURNING THE LENS ON MASS MEDIA



79. Robert Heinecken
American, 1931 – 2006
A Case Study in Finding an Appropriate TV Newswoman (A CBS Docudrama in Words and Pictures), 1984
Silver-dye bleach prints
Frame (Panel 1, 11-12): 112.4 x 37.5 cm (44 1/4 x 14 3/4 in.)
Frame (Panel 2-10): 112.4 x 108 cm (44 1/4 x 42 1/2 in.)
Hammer Museum, Los Angeles. Partial purchase through
The Board of Overseers Acquisition Fund and Partial Gift of
Marc Selwyn
© The Robert Heinecken Trust
EX.2017.4.3.1 -.12



80. Robert Heinecken
American, 1931 – 2006
Untitled, 1984
Silver-dye bleach prints
Image (each): 26.7 x 34 cm (10 1/2 x 13 3/8 in.)
The J. Paul Getty Museum, Los Angeles
© The Robert Heinecken Trust
2016.1.1 - .9

BREAKING NEWS

TURNING THE LENS ON MASS MEDIA



81. Alfredo Jaar
Chilean, born 1956
Searching for Africa in LIFE, 1996
Chromogenic prints mounted on plexiglass
Mount (each): 152.4 × 101.6 cm (60 × 40 in.)
Courtesy of Alfredo Jaar and Galerie Lelong, New York
© Alfredo Jaar, courtesy Galerie Lelong, New York
GP1534.2
EX.2017.4.21.1 - .5



82. Alfredo Jaar
Chilean, born 1956
Untitled (Newsweek) (detail), 1994
Inkjet prints
Mount (each): 50.5 × 34.9 × 4.4 cm (19 7/8 × 13 3/4 × 1 3/4 in.)
Courtesy of Alfredo Jaar and Galerie Lelong, New York
© Alfredo Jaar, courtesy Galerie Lelong, New York
EX.2017.4.6.1 - .17

TURNING THE LENS ON MASS MEDIA



83. Ron Jude
American, born 1965
Untitled, from the series *Alpine Star*, 2004–2006
Inkjet print
Framed: 37.5 × 29.8 cm (14 3/4 × 11 3/4 in.)
Courtesy of artist and Gallery Luisotti, Santa Monica
© Ron Jude
EX.2017.4.5.21



84. Ron Jude
American, born 1965
Untitled, from the series *Alpine Star*, 2004–2006
Inkjet print
Framed: 37.5 × 29.8 cm (14 3/4 × 11 3/4 in.)
Courtesy of artist and Gallery Luisotti, Santa Monica
© Ron Jude
EX.2017.4.5.15



85. Ron Jude
American, born 1965
Untitled, from the series *Alpine Star*, 2004–2006
Inkjet print
Framed: 37.5 × 29.8 cm (14 3/4 × 11 3/4 in.)
Courtesy of artist and Gallery Luisotti, Santa Monica
© Ron Jude
EX.2017.4.5.30



86. Ron Jude
American, born 1965
Untitled, from the series *Alpine Star*, 2004–2006
Inkjet print
Framed: 37.5 × 29.8 cm (14 3/4 × 11 3/4 in.)
Courtesy of artist and Gallery Luisotti, Santa Monica
© Ron Jude
EX.2017.4.5.36



87. Ron Jude
American, born 1965
Untitled, from the series *Alpine Star*, 2004–2006
Inkjet print
Framed: 37.5 × 29.8 cm (14 3/4 × 11 3/4 in.)
Courtesy of artist and Gallery Luisotti, Santa Monica
© Ron Jude
EX.2017.4.5.24



88. Ron Jude
American, born 1965
Untitled, from the series *Alpine Star*, 2004–2006
Inkjet print
Framed: 37.5 × 29.8 cm (14 3/4 × 11 3/4 in.)
Courtesy of artist and Gallery Luisotti, Santa Monica
© Ron Jude
EX.2017.4.5.45

TURNING THE LENS ON MASS MEDIA



89. Ron Jude
American, born 1965
Untitled, from the series *Alpine Star*, 2004–2006
Inkjet print
Framed: 37.5 × 29.8 cm (14 3/4 × 11 3/4 in.)
Courtesy of artist and Gallery Luisotti, Santa Monica
© Ron Jude
EX.2017.4.5.28



90. Ron Jude
American, born 1965
Untitled, from the series *Alpine Star*, 2004–2006
Inkjet print
Framed: 37.5 × 29.8 cm (14 3/4 × 11 3/4 in.)
Courtesy of artist and Gallery Luisotti, Santa Monica
© Ron Jude
EX.2017.4.5.38



91. Ron Jude
American, born 1965
Untitled, from the series *Alpine Star*, 2004–2006
Inkjet print
Framed: 37.5 × 29.8 cm (14 3/4 × 11 3/4 in.)
Courtesy of artist and Gallery Luisotti, Santa Monica
© Ron Jude
EX.2017.4.5.14



92. Ron Jude
American, born 1965
Untitled, from the series *Alpine Star*, 2004–2006
Inkjet print
Framed: 37.5 × 29.8 cm (14 3/4 × 11 3/4 in.)
Courtesy of artist and Gallery Luisotti, Santa Monica
© Ron Jude
EX.2017.4.5.12



93. Ron Jude
American, born 1965
Untitled, from the series *Alpine Star*, 2004–2006
Inkjet print
Framed: 37.5 × 29.8 cm (14 3/4 × 11 3/4 in.)
Courtesy of artist and Gallery Luisotti, Santa Monica
© Ron Jude
EX.2017.4.5.31



94. Ron Jude
American, born 1965
Untitled, from the series *Alpine Star*, 2004–2006
Inkjet print
Framed: 37.5 × 29.8 cm (14 3/4 × 11 3/4 in.)
Courtesy of artist and Gallery Luisotti, Santa Monica
© Ron Jude
EX.2017.4.5.2

TURNING THE LENS ON MASS MEDIA



95. Ron Jude
American, born 1965
Untitled, from the series *Alpine Star*, 2004-2006
Inkjet print
Framed: 37.5 × 29.8 cm (14 3/4 × 11 3/4 in.)
Courtesy of artist and Gallery Luisotti, Santa Monica
© Ron Jude
EX.2017.4.5.29



96. Ron Jude
American, born 1965
Untitled, from the series *Alpine Star*, 2004-2006
Inkjet print
Framed: 37.5 × 29.8 cm (14 3/4 × 11 3/4 in.)
Courtesy of artist and Gallery Luisotti, Santa Monica
© Ron Jude
EX.2017.4.5.18



97. Ron Jude
American, born 1965
Untitled, from the series *Alpine Star*, 2004-2006
Inkjet print
Framed: 37.5 × 29.8 cm (14 3/4 × 11 3/4 in.)
Courtesy of artist and Gallery Luisotti, Santa Monica
© Ron Jude
EX.2017.4.5.7



98. Ron Jude
American, born 1965
Untitled, from the series *Alpine Star*, 2004-2006
Inkjet print
Framed: 37.5 × 29.8 cm (14 3/4 × 11 3/4 in.)
Courtesy of artist and Gallery Luisotti, Santa Monica
© Ron Jude
EX.2017.4.5.11



99. Ron Jude
American, born 1965
Untitled, from the series *Alpine Star*, 2004-2006
Inkjet print
Framed: 37.5 × 29.8 cm (14 3/4 × 11 3/4 in.)
Courtesy of artist and Gallery Luisotti, Santa Monica
© Ron Jude
EX.2017.4.5.25

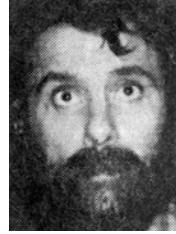


100. Ron Jude
American, born 1965
Untitled, from the series *Alpine Star*, 2004-2006
Inkjet print
Framed: 37.5 × 29.8 cm (14 3/4 × 11 3/4 in.)
Courtesy of artist and Gallery Luisotti, Santa Monica
© Ron Jude
EX.2017.4.5.22

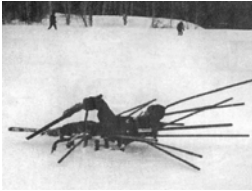
TURNING THE LENS ON MASS MEDIA



101. Ron Jude
American, born 1965
Untitled, from the series *Alpine Star*, 2004–2006
Inkjet print
Framed: 37.5 × 29.8 cm (14 3/4 × 11 3/4 in.)
Courtesy of artist and Gallery Luisotti, Santa Monica
© Ron Jude
EX.2017.4.5.3



102. Ron Jude
American, born 1965
Untitled, from the series *Alpine Star*, 2004–2006
Inkjet print
Framed: 37.5 × 29.8 cm (14 3/4 × 11 3/4 in.)
Courtesy of artist and Gallery Luisotti, Santa Monica
© Ron Jude
EX.2017.4.5.33



103. Ron Jude
American, born 1965
Untitled, from the series *Alpine Star*, 2004–2006
Inkjet print
Framed: 37.5 × 29.8 cm (14 3/4 × 11 3/4 in.)
Courtesy of artist and Gallery Luisotti, Santa Monica
© Ron Jude
EX.2017.4.5.8



104. Ron Jude
American, born 1965
Untitled, from the series *Alpine Star*, 2004–2006
Inkjet print
Framed: 37.5 × 29.8 cm (14 3/4 × 11 3/4 in.)
Courtesy of artist and Gallery Luisotti, Santa Monica
© Ron Jude
EX.2017.4.5.42



105. Ron Jude
American, born 1965
Untitled, from the series *Alpine Star*, 2004–2006
Inkjet print
Framed: 37.5 × 29.8 cm (14 3/4 × 11 3/4 in.)
Courtesy of artist and Gallery Luisotti, Santa Monica
© Ron Jude
EX.2017.4.5.10



106. Ron Jude
American, born 1965
Untitled, from the series *Alpine Star*, 2004–2006
Inkjet print
Framed: 37.5 × 29.8 cm (14 3/4 × 11 3/4 in.)
Courtesy of artist and Gallery Luisotti, Santa Monica
© Ron Jude
EX.2017.4.5.13

BREAKING NEWS

TURNING THE LENS ON MASS MEDIA



107. Ron Jude
American, born 1965
Untitled, from the series *Alpine Star*, 2004–2006
Inkjet print
Framed: 37.5 × 29.8 cm (14 3/4 × 11 3/4 in.)
Courtesy of artist and Gallery Luisotti, Santa Monica
© Ron Jude
EX.2017.4.5.19



108. Ron Jude
American, born 1965
Untitled, from the series *Alpine Star*, 2004–2006
Inkjet print
Framed: 37.5 × 29.8 cm (14 3/4 × 11 3/4 in.)
Courtesy of artist and Gallery Luisotti, Santa Monica
© Ron Jude
EX.2017.4.5.43



109. Ron Jude
American, born 1965
Untitled, from the series *Alpine Star*, 2004–2006
Inkjet print
Framed: 37.5 × 29.8 cm (14 3/4 × 11 3/4 in.)
Courtesy of artist and Gallery Luisotti, Santa Monica
© Ron Jude
EX.2017.4.5.6



110. Ron Jude
American, born 1965
Untitled, from the series *Alpine Star*, 2004–2006
Inkjet print
Framed: 37.5 × 29.8 cm (14 3/4 × 11 3/4 in.)
Courtesy of artist and Gallery Luisotti, Santa Monica
© Ron Jude
EX.2017.4.5.40



111. Ron Jude
American, born 1965
Untitled, from the series *Alpine Star*, 2004–2006
Inkjet print
Framed: 37.5 × 29.8 cm (14 3/4 × 11 3/4 in.)
Courtesy of artist and Gallery Luisotti, Santa Monica
© Ron Jude
EX.2017.4.5.37



112. Ron Jude
American, born 1965
Untitled, from the series *Alpine Star*, 2004–2006
Inkjet print
Framed: 37.5 × 29.8 cm (14 3/4 × 11 3/4 in.)
Courtesy of artist and Gallery Luisotti, Santa Monica
© Ron Jude
EX.2017.4.5.17

TURNING THE LENS ON MASS MEDIA



113. Ron Jude
American, born 1965
Untitled, from the series *Alpine Star*, 2004-2006
Inkjet print
Framed: 37.5 x 29.8 cm (14 3/4 x 11 3/4 in.)
Courtesy of artist and Gallery Luisotti, Santa Monica
© Ron Jude
EX.2017.4.5.4



114. Ron Jude
American, born 1965
Untitled, from the series *Alpine Star*, 2004-2006
Inkjet print
Framed: 37.5 x 29.8 cm (14 3/4 x 11 3/4 in.)
Courtesy of artist and Gallery Luisotti, Santa Monica
© Ron Jude
EX.2017.4.5.1



115. Ron Jude
American, born 1965
Untitled, from the series *Alpine Star*, 2004-2006
Inkjet print
Framed: 37.5 x 29.8 cm (14 3/4 x 11 3/4 in.)
Courtesy of artist and Gallery Luisotti, Santa Monica
© Ron Jude
EX.2017.4.5.26



116. Ron Jude
American, born 1965
Untitled, from the series *Alpine Star*, 2004-2006
Inkjet print
Framed: 37.5 x 29.8 cm (14 3/4 x 11 3/4 in.)
Courtesy of artist and Gallery Luisotti, Santa Monica
© Ron Jude
EX.2017.4.5.9



117. Ron Jude
American, born 1965
Untitled, from the series *Alpine Star*, 2004-2006
Inkjet print
Framed: 37.5 x 29.8 cm (14 3/4 x 11 3/4 in.)
Courtesy of artist and Gallery Luisotti, Santa Monica
© Ron Jude
EX.2017.4.5.20



118. Ron Jude
American, born 1965
Untitled, from the series *Alpine Star*, 2004-2006
Inkjet print
Framed: 37.5 x 29.8 cm (14 3/4 x 11 3/4 in.)
Courtesy of artist and Gallery Luisotti, Santa Monica
© Ron Jude
EX.2017.4.5.34

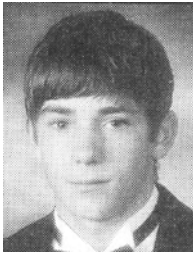
TURNING THE LENS ON MASS MEDIA



119. Ron Jude
American, born 1965
Untitled, from the series *Alpine Star*, 2004–2006
Inkjet print
Framed: 37.5 × 29.8 cm (14 3/4 × 11 3/4 in.)
Courtesy of artist and Gallery Luisotti, Santa Monica
© Ron Jude
EX.2017.4.5.23



120. Ron Jude
American, born 1965
Untitled, from the series *Alpine Star*, 2004–2006
Inkjet print
Framed: 37.5 × 29.8 cm (14 3/4 × 11 3/4 in.)
Courtesy of artist and Gallery Luisotti, Santa Monica
© Ron Jude
EX.2017.4.5.5



121. Ron Jude
American, born 1965
Untitled, from the series *Alpine Star*, 2004–2006
Inkjet print
Framed: 37.5 × 29.8 cm (14 3/4 × 11 3/4 in.)
Courtesy of artist and Gallery Luisotti, Santa Monica
© Ron Jude
EX.2017.4.5.32



122. Ron Jude
American, born 1965
Untitled, from the series *Alpine Star*, 2004–2006
Inkjet print
Framed: 37.5 × 29.8 cm (14 3/4 × 11 3/4 in.)
Courtesy of artist and Gallery Luisotti, Santa Monica
© Ron Jude
EX.2017.4.5.16



123. Ron Jude
American, born 1965
Untitled, from the series *Alpine Star*, 2004–2006
Inkjet print
Framed: 37.5 × 29.8 cm (14 3/4 × 11 3/4 in.)
Courtesy of artist and Gallery Luisotti, Santa Monica
© Ron Jude
EX.2017.4.5.39



124. Ron Jude
American, born 1965
Untitled, from the series *Alpine Star*, 2004–2006
Inkjet print
Framed: 37.5 × 29.8 cm (14 3/4 × 11 3/4 in.)
Courtesy of artist and Gallery Luisotti, Santa Monica
© Ron Jude
EX.2017.4.5.41

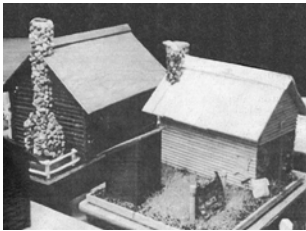
TURNING THE LENS ON MASS MEDIA



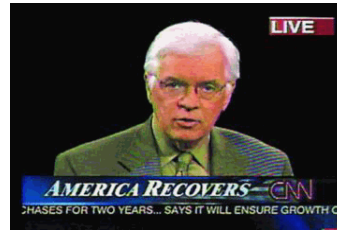
125. Ron Jude
American, born 1965
Untitled, from the series *Alpine Star*, 2004–2006
Inkjet print
Framed: 37.5 x 29.8 cm (14 3/4 x 11 3/4 in.)
Courtesy of artist and Gallery Luisotti, Santa Monica
© Ron Jude
EX.2017.4.5.27



126. Ron Jude
American, born 1965
Untitled, from the series *Alpine Star*, 2004–2006
Inkjet print
Framed: 37.5 x 29.8 cm (14 3/4 x 11 3/4 in.)
Courtesy of artist and Gallery Luisotti, Santa Monica
© Ron Jude
EX.2017.4.5.44



127. Ron Jude
American, born 1965
Untitled, from the series *Alpine Star*, 2004–2006
Inkjet print
Framed: 37.5 x 29.8 cm (14 3/4 x 11 3/4 in.)
Courtesy of artist and Gallery Luisotti, Santa Monica
© Ron Jude
EX.2017.4.5.35



128. Omer Fast
Israeli, born 1972
CNN Concatenated, 2002
Single channel video with sound
Running Time: 18 minutes, 17 seconds
© Omer Fast
EX.2017.4.15

Thumbnail not available

Thumbnail not available

129. Adam Broomberg
South African, born 1970
Oliver Chanarin
English, born 1971
War Primer 2, 2011
Ink
Closed: 30 x 25 x 1.9 cm (11 13/16 x 9 13/16 x 3/4 in.)
The Museum of Modern Art, New York, Gift of Paradise Row
© Adam Broomberg & Oliver Chanarin
EX.2017.4.22

130. Adam Broomberg
South African, born 1970
Oliver Chanarin
English, born 1971
War Primer 2, 2011
Ink
Closed: 30 x 25 x 1.9 cm (11 13/16 x 9 13/16 x 3/4 in.)
Courtesy, Private Collection
© Adam Broomberg & Oliver Chanarin
EX.2017.4.23

TURNING THE LENS ON MASS MEDIA

Thumbnail not available



131. Adam Broomberg
South African, born 1970
Oliver Chanarin
English, born 1971
War Primer 2, 2011
Ink
Closed: 30 × 25 × 1.9 cm (11 13/16 × 9 13/16 × 3/4 in.)
Courtesy, Private Collection
© Adam Broomberg & Oliver Chanarin
EX.2017.4.24

132. Adam Broomberg
South African, born 1970
Oliver Chanarin
English, born 1971
War Primer 2, Plate 31: *As news spread across the world of Iran's provocative missile tests, so did an image of four missiles heading skyward in unison. Unfortunately, it appeared to contain one too many missiles, a point that had not emerged before the photo was used on the front pages of The Los Angeles Times and several other major newspapers*, 2011
Ink
Closed: 30 × 25 × 1.9 cm (11 13/16 × 9 13/16 × 3/4 in.)
Courtesy, Private Collection
Image Courtesy the artists and Lisson Gallery
© Adam Broomberg & Oliver Chanarin
EX.2017.4.25

Thumbnail not available



133. Adam Broomberg
South African, born 1970
Oliver Chanarin
English, born 1971
War Primer 2, 2011
Ink
Closed: 30 × 25 × 1.9 cm (11 13/16 × 9 13/16 × 3/4 in.)
Courtesy, Ben Burbridge
© Adam Broomberg & Oliver Chanarin
EX.2017.4.26

134. Adam Broomberg
South African, born 1970
Oliver Chanarin
English, born 1971
War Primer 2, Plate 23: *Aircraft, at right, is seen as it is about to fly into the World Trade Center in New York on Tuesday. The aircraft was the second to fly into the tower Tuesday morning*, 2011
Ink
Closed: 30 × 25 × 1.9 cm (11 13/16 × 9 13/16 × 3/4 in.)
Courtesy, Private Collection
Image Courtesy the artists and Lisson Gallery
© Adam Broomberg & Oliver Chanarin
EX.2017.4.27

TURNING THE LENS ON MASS MEDIA

Thumbnail not available



135. Adam Broomberg
South African, born 1970
Oliver Chanarin
English, born 1971
War Primer 2, 2011
Ink
Closed: 30 × 25 × 1.9 cm (11 13/16 × 9 13/16 × 3/4 in.)
Courtesy, Private Collection
© Adam Broomberg & Oliver Chanarin
EX.2017.4.28

136. Adam Broomberg
South African, born 1970
Oliver Chanarin
English, born 1971
War Primer 2, Plate 75: Smoke pours from the upper levels of the World Trade Center's north tower, as those fleeing the fires fall to their death. (photo David Surowiecki), 2011
Ink
Closed: 30 × 25 × 1.9 cm (11 13/16 × 9 13/16 × 3/4 in.)
Courtesy, Private Collection
Image courtesy of the artists and Lisson Gallery
© Adam Broomberg & Oliver Chanarin
EX.2017.4.29



137. Adam Broomberg
South African, born 1970
Oliver Chanarin
English, born 1971
War Primer 2, Plate 40, 2011
Ink
Closed: 30 × 25 × 1.9 cm (11 13/16 × 9 13/16 × 3/4 in.)
Courtesy, Private Collection
Image Courtesy the artists and Lisson Gallery
© Adam Broomberg & Oliver Chanarin
EX.2017.4.30



138. Adam Broomberg
South African, born 1970
Oliver Chanarin
English, born 1971
War Primer 2, Plate 10: President Barack Obama and Vice President Joe Biden, Secretary of Defense Robert Gates, Secretary of State Hillary Clinton along with members of the national security team, as they receive an update on the mission against Osama bin Laden in the Situation Room of the White House May 1, 2011, 2011
Ink
Closed: 30 × 25 × 1.9 cm (11 13/16 × 9 13/16 × 3/4 in.)
Courtesy, Private Collection
Image courtesy of the artists and Lisson Gallery
© Adam Broomberg & Oliver Chanarin
EX.2017.4.31

TURNING THE LENS ON MASS MEDIA

Thumbnail not available



139. Adam Broomberg
South African, born 1970
Oliver Chanarin
English, born 1971
War Primer 2, 2011
Ink
Closed: 30 × 25 × 1.9 cm (11 13/16 × 9 13/16 × 3/4 in.)
Courtesy, Private Collection
© Adam Broomberg & Oliver Chanarin
EX.2017.4.32

140. Adam Broomberg
South African, born 1970
Oliver Chanarin
English, born 1971
War Primer 2, Plate 62: *Palestinian mourners use their mobile phones to take pictures during the funeral of Mosub Daana, who was shot and killed by Israeli troops during clashes at a rally by Hamas supporters against Israel's military operation in Gaza, in the West city of Hebron, Friday Jan. 16, 2009 (photo Nasser Shiyoukhi), 2011*
Ink
Closed: 30 × 25 × 1.9 cm (11 13/16 × 9 13/16 × 3/4 in.)
Courtesy, Megan Wyler
Image courtesy of the artists and Lisson Gallery
© Adam Broomberg & Oliver Chanarin
EX.2017.4.33



Thumbnail not available

141. Adam Broomberg
South African, born 1970
Oliver Chanarin
English, born 1971
War Primer 2, Plate 50: *An unidentified detainee standing on a box with a bag on his head and wires attached to him in late 2003 at the Abu Ghraib prison in Baghdad. The image came back to haunt the U.S. in June 2006 when it and similar images of U.S. troops ill-treating prisoners were broadcast by Australian television network SBS, 2011*
Ink
Closed: 30 × 25 × 1.9 cm (11 13/16 × 9 13/16 × 3/4 in.)
Courtesy, Private Collection
Image courtesy of the artists and Lisson Gallery
© Adam Broomberg & Oliver Chanarin
EX.2017.4.34

142. Adam Broomberg
South African, born 1970
Oliver Chanarin
English, born 1971
War Primer 2, 2011
Ink
Closed: 30 × 25 × 1.9 cm (11 13/16 × 9 13/16 × 3/4 in.)
Courtesy, Private Collection
© Adam Broomberg & Oliver Chanarin
EX.2017.4.35

Thumbnail not available

Thumbnail not available

143. Adam Broomberg
South African, born 1970
Oliver Chanarin
English, born 1971
War Primer 2, 2011
Ink
Closed: 30 × 25 × 1.9 cm (11 13/16 × 9 13/16 × 3/4 in.)
Courtesy, Gallery Yancey Richardson, New York
© Adam Broomberg & Oliver Chanarin
EX.2017.4.36

144. Adam Broomberg
South African, born 1970
Oliver Chanarin
English, born 1971
War Primer 2, 2011
Ink
Closed: 30 × 25 × 1.9 cm (11 13/16 × 9 13/16 × 3/4 in.)
Courtesy, David Birkin
© Adam Broomberg & Oliver Chanarin
EX.2017.4.37