

# The Alchemy of Color in Medieval Manuscripts

October 11, 2016 to January 1, 2017

The J. Paul Getty Museum at the Getty Center



1. Joris Hoefnagel

Flemish / Hungarian, 1542 - 1600

[Guide for Constructing the Ligature ffi](#), ABOUT 1591-96  
from Model Book of Calligraphy

Watercolors, gold and silver paint, and ink on parchment

Leaf: 16.6 × 12.4 cm (6 9/16 × 4 7/8 in.)

The J. Paul Getty Museum, Los Angeles

Ms. 20, fol. 151v (86.MV.527.151v)



2. Unknown

[The Personification of Nature Making Birds, Animals, and People](#), about 1405

from Romance of the Rose

Tempera colors, gold leaf, and ink on parchment bound

between pasteboard covered with dark red morocco

Leaf: 36.7 × 26 cm (14 7/16 × 10 1/4 in.)

The J. Paul Getty Museum, Los Angeles

Ms. Ludwig XV 7, fol. 121v (83.MR.177.121v)



3. Unknown

[The God of Love Giving a Crosier and a Miter to Genius; Genius Reading a Scroll before the God of Love](#), about 1405

from Romance of the Rose

Tempera colors, gold leaf, and ink on parchment bound

between pasteboard covered with dark red morocco

Leaf: 36.7 × 26 cm (14 7/16 × 10 1/4 in.)

The J. Paul Getty Museum, Los Angeles

Ms. Ludwig XV 7, fol. 122 (83.MR.177.122)



4. Unknown

[The Planet Mars as an Armored Knight on Horseback](#), shortly after 1464

from Miscellany: Anatomical-Physiological Description of Men; Liber Synonimorum; Descriptions of Planets, Zodiacs, and Comets; Treatises on Divination from Names, etc.

Watercolor and ink on paper bound between original wood boards covered with original pigskin

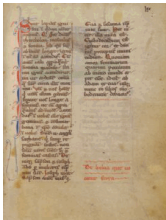
Leaf: 30.6 × 22.1 cm (12 1/16 × 8 11/16 in.)

The J. Paul Getty Museum, Los Angeles

Ms. Ludwig XII 8, fol. 48v (83.MO.137.48v)



5. Unknown  
[The Planet Mercury as a Doctor on Horseback](#), shortly after 1464  
from Miscellany: Anatomical-Physiological Description of Men; Liber Synonimorum; Descriptions of Planets, Zodiacs, and Comets; Treatises on Divination from Names, etc.  
Watercolor and ink on paper bound between original wood boards covered with original pigskin  
Leaf: 30.6 × 22.1 cm (12 1/16 × 8 11/16 in.)  
The J. Paul Getty Museum, Los Angeles  
Ms. Ludwig XII 8, fol. 49 (83.MO.137.49)



7. Unknown  
Decorated Text Page, about 1270  
from Bestiary  
Tempera colors, gold leaf, and ink on parchment  
Leaf: 19.1 × 14.3 cm (7 1/2 × 5 5/8 in.)  
The J. Paul Getty Museum, Los Angeles  
Ms. Ludwig XV 3, fol. 70 (83.MR.173.70)



6. Unknown  
[Fire Stones](#), about 1270  
from Bestiary  
Tempera colors, gold leaf, and ink on parchment  
Leaf: 19.1 × 14.3 cm (7 1/2 × 5 5/8 in.)  
The J. Paul Getty Museum, Los Angeles  
Ms. Ludwig XV 3, fol. 69v (83.MR.173.69v)

8. Unknown  
Portions of a Uroscopy Wheel with Added Commentary, fifteenth century with sixteenth century textual additions  
Colored inks on paper, bound in parchment  
Closed: 15.2 × 22.5 cm (6 × 8 7/8 in.)  
History and Special Collections for the Sciences, UCLA  
Library Special Collections  
L.2016.5

9. Gilles de Corbeil, *Carmina da urinarum iudicii (et de pulsibus)*  
French, about 1140 - about 1224  
Ulrich Pinder, *Epiphaie Medicorum*  
Doctor Examining a Flask before a Patient within a Uroscopy Wheel, 1494  
History and Special Collections for the Sciences, UCLA  
Library Special Collections  
L.2016.12

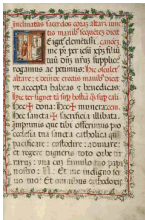
10. Unknown maker  
*Pigment Recipes*, about 1406  
Brown ink on paper bound in full-leather over pasteboard  
Closed: 23.8 × 32.4 × 4.8 cm (9 3/8 × 12 3/4 × 1 7/8 in.)  
The Huntington Library, San Marino, California  
L.2016.3



11. Unknown maker  
Recipes for Making Ink, fifteenth century with sixteenth century additions  
Brown and red inks on paper, bound in full leather over pasteboard  
Closed: 20.6 × 23.5 × 3.8 cm (8 1/8 × 9 1/4 × 1 1/2 in.)  
The Huntington Library, San Marino, California  
L.2016.4

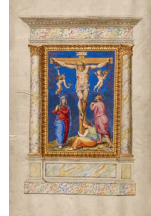


13. Unknown  
[Decorated Incipit Page](#), about 1120 - 1140  
from Gospel Book  
Tempera colors, gold, and silver on parchment  
Leaf: 22.9 × 16.5 cm (9 × 6 1/2 in.)  
The J. Paul Getty Museum, Los Angeles  
Ms. Ludwig II 3, fol. 128 (83.MB.67.128)

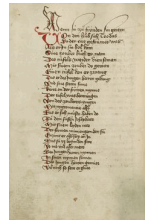


15. Fra Vincentius a Fundis  
Italian, active about 1560s  
[Initial T: A Priest Celebrating Mass](#), 1567  
from Missal of Bishop Antonio Scarampi  
Tempera and gold leaf on parchment  
Leaf: 41 × 27 cm (16 1/8 × 10 5/8 in.)  
The J. Paul Getty Museum, Los Angeles  
Ms. Ludwig V 7, fol. 12 (83.MG.82.12)

12. Unknown  
[Saint John the Evangelist](#), about 1120-40  
from Gospel Book  
Tempera colors, gold, and silver on parchment  
Leaf: 22.9 × 16.5 cm (9 × 6 1/2 in.)  
The J. Paul Getty Museum, Los Angeles  
Ms. Ludwig II 3, fol. 127v (83.MB.67.127v)



14. Fra Vincentius a Fundis  
Italian, active about 1560s  
[The Crucifixion](#), 1567  
from Missal of Bishop Antonio Scarampi  
Tempera and gold leaf on parchment  
Leaf: 41 × 27 cm (16 1/8 × 10 5/8 in.)  
The J. Paul Getty Museum, Los Angeles  
Ms. Ludwig V 7, fol. 11v (83.MG.82.11v)



16. Unknown  
[Text Page](#), 1469  
from Barlaam and Josaphat  
Ink on paper  
Leaf: 28.6 × 20.3 cm (11 1/4 × 8 in.)  
The J. Paul Getty Museum, Los Angeles  
Ms. Ludwig XV 9, fol. 279v (83.MR.179.279v)



17. Follower of Hans Schilling  
German, active 1459 - 1467  
from the Workshop of Diebold Lauber  
German, active 1427 - 1467  
[Theodas with the Book of Magic and the Devil](#), 1469  
from Barlaam and Josaphat  
Ink, colored washes, and tempera colors on paper  
Leaf: 28.6 × 20.3 cm (11 1/4 × 8 in.)  
The J. Paul Getty Museum, Los Angeles  
Ms. Ludwig XV 9, fol. 280 (83.MR.179.280)

18. Unknown  
[Decorated Text Pages](#), early ninth century  
Bifolium from a Gospel Lectionary (fols. 47 and 52)  
Tempera colors and gold and silver paint on parchment  
Leaf: 24.1 × 18.1 cm (9 1/2 × 7 1/8 in.)  
The J. Paul Getty Museum, Los Angeles  
Ms. Ludwig IV 1, fol. 47v (83.MD.73.25.47.verso)



19. Unknown  
[Decorated Text Pages](#), early ninth century  
Bifolium from a Gospel Lectionary (fols. 47 and 52)  
Tempera colors and gold and silver paint on parchment  
Leaf: 24.1 × 18.1 cm (9 1/2 × 7 1/8 in.)  
The J. Paul Getty Museum, Los Angeles  
Ms. Ludwig IV 1, fol. 52 (83.MD.73.25.52.recto)

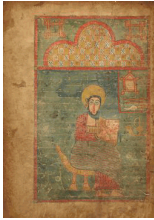
20. Unknown  
[A Lion](#), about 1510-20  
from Miscellany: Physiologus; other texts  
Pen and red lead and iron gall inks, watercolors, tempera colors, and gold paint on paper bound between wood boards covered with probably original brown calf  
Leaf: 21.7 × 15.6 cm (8 9/16 × 6 1/8 in.)  
The J. Paul Getty Museum, Los Angeles  
Ms. Ludwig XV 2, fol. 3 (83.MR.172.3)



21. Unknown  
[Saint Mark](#), about 1325-45  
Leaf from a Gospel Book or New Testament  
Tempera colors and gold leaf on parchment  
Leaf: 19.2 × 14.5 cm (7 9/16 × 5 11/16 in.)  
The J. Paul Getty Museum, Los Angeles  
Ms. 70, verso (2002.23.verso)



22. Unknown  
[The Adoration of the Magi](#), about 1240  
Miniature from a Psalter  
Leaf: 17.8 × 13.5 cm (7 × 5 5/16 in.)  
The J. Paul Getty Museum, Los Angeles  
Ms. 4, leaf 2 (84.ML.84.2.recto)



23. Unknown  
[Saint John](#), late fourteenth or early fifteenth century  
Leaf from a Gospel book  
Tempera colors on parchment  
Leaf: 33.7 × 23.3 cm (13 1/4 × 9 3/16 in.)  
The J. Paul Getty Museum, Los Angeles, Gift of Sam Fogg  
Ms. 89, verso (2005.3.verso)



25. Unknown  
[Saint John](#), about 1504-5  
from Gospel Book  
Tempera on parchment  
Leaf: 34.5 × 26.5 cm (13 9/16 × 10 7/16 in.)  
The J. Paul Getty Museum, Los Angeles  
Ms. 102, fol. 215v (2008.15.215v)

27. Unknown  
[Decorated Text Page](#), about 1456  
Tempera colors, gold leaf, and ink on parchment bound  
between wood boards covered with red morocco  
Leaf: 32.9 × 22.1 cm (12 15/16 × 8 11/16 in.)  
The J. Paul Getty Museum, Los Angeles  
Ms. Ludwig XI 1, fol. 1v (83.MN.120.1v)

24. Master of the Murano Gradual  
Italian, active about 1430 - 1460  
Initial G: Birth of the Virgin, second quarter of the  
fifteenth century  
Tempera colors and gold on parchment  
Leaf: 19.4 × 12.6 cm (7 5/8 × 4 15/16 in.)  
Robert McCarthy  
L.2014.69



26. Unknown  
[Decorated Incipit Page](#), about 1504 - 1505  
from Gospel Book  
Tempera on parchment  
Leaf: 34.5 × 26.5 cm (13 9/16 × 10 7/16 in.)  
The J. Paul Getty Museum, Los Angeles  
Ms. 102, fol. 216 (2008.15.216)



28. Ser Ricciardo di Nanni  
Italian, active 1449 - 1480  
[Initial M: Portrait of Lactantius](#), about 1456  
Tempera colors, gold leaf, and ink on parchment bound  
between wood boards covered with red morocco  
Leaf: 32.9 × 22.1 cm (12 15/16 × 8 11/16 in.)  
The J. Paul Getty Museum, Los Angeles  
Ms. Ludwig XI 1, fol. 2 (83.MN.120.2)

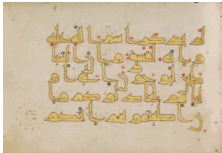


29. Unknown  
[The Visitation](#), about 1460  
from Book of Hours  
Tempera colors, gold, and ink on parchment  
Leaf: 17.1 × 12.1 cm (6 3/4 × 4 3/4 in.)  
The J. Paul Getty Museum, Los Angeles  
Ms. Ludwig IX 12, fol. 28v (83.ML.108.28v)



30. Jean Bourdichon  
French, 1457 - 1521  
[Job on the Dungheap](#), about 1480-85  
from Katherine Hours  
Tempera colors, gold, and ink on parchment  
Leaf: 16.4 × 11.6 cm (6 7/16 × 4 9/16 in.)  
The J. Paul Getty Museum, Los Angeles  
Ms. 6, fol. 96 (84.ML.746.96)

31. Unknown  
[Decorated Text Pages](#), early ninth century  
Bifolium from a Gospel Lectionary (fols. 2 and 3)  
Tempera colors and gold and silver paint on parchment;  
fols. 1 - 4 stained purple; disbound  
Leaf: 24.1 × 18.1 cm (9 1/2 × 7 1/8 in.)  
The J. Paul Getty Museum, Los Angeles  
Ms. Ludwig IV 1, fol. 2 (83.MD.73.2.2.recto)



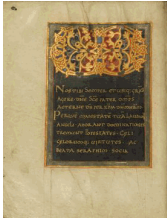
32. Unknown  
[Decorated Text Pages](#), early ninth century  
Bifolium from a Gospel Lectionary (fols. 2 and 3)  
Tempera colors and gold and silver paint on parchment;  
fols. 1 - 4 stained purple; disbound  
Leaf: 24.1 × 18.1 cm (9 1/2 × 7 1/8 in.)  
The J. Paul Getty Museum, Los Angeles  
Ms. Ludwig IV 1, fol. 3v (83.MD.73.2.3.verso)



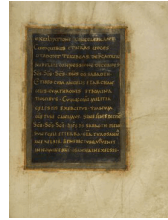
33. Unknown  
[Decorated Text Page](#), ninth century  
Bifolium from a Fragmentary Koran (fols. 4 and 9)  
Pen and ink, gold paint, and tempera colors on parchment  
Leaf: 14.4 × 20.8 cm (5 11/16 × 8 3/16 in.)  
The J. Paul Getty Museum, Los Angeles  
Ms. Ludwig X 1, fol. 9.recto (83.MM.118.3.9.recto)

34. Unknown  
[Decorated Text Page](#), ninth century  
Bifolium from a Fragmentary Koran (fols. 5 and 8)  
Pen and ink, gold paint, and tempera colors on parchment  
Leaf: 14.4 × 20.8 cm (5 11/16 × 8 3/16 in.)  
The J. Paul Getty Museum, Los Angeles  
Ms. Ludwig X 1, fol. 8.verso (83.MM.118.4.8.verso)





35. Unknown  
**Ornamental Monogram VD**, first quarter of the eleventh century  
from Sacramentary  
Tempera colors, gold, silver, and ink on parchment  
Leaf: 23.2 × 17.9 cm (9 1/8 × 7 1/16 in.)  
The J. Paul Getty Museum, Los Angeles  
Ms. Ludwig V 1, fol. 1v (83.MF.76.1v)



36. Unknown  
**Decorated Text Page**, first quarter of 11th century  
from Sacramentary  
Tempera colors, gold, silver, and ink on parchment  
Leaf: 23.2 × 17.9 cm (9 1/8 × 7 1/16 in.)  
The J. Paul Getty Museum, Los Angeles  
Ms. Ludwig V 1, fol. 2 (83.MF.76.2)



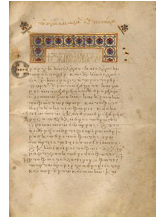
37. Unknown  
**Pentecost**, about 1030-40  
from Benedictional  
Tempera colors, gold leaf, and ink on parchment  
Leaf: 23.2 × 16 cm (9 1/8 × 6 5/16 in.)  
The J. Paul Getty Museum, Los Angeles  
Ms. Ludwig VII 1, fol. 47v (83.MI.90.47v)



38. Unknown  
**Decorated Incipit Page**, about 1030 - 1040  
from Benedictional  
Tempera colors, gold leaf, and ink on parchment  
Leaf: 23.2 × 16 cm (9 1/8 × 6 5/16 in.)  
The J. Paul Getty Museum, Los Angeles  
Ms. Ludwig VII 1, fol. 48 (83.MI.90.48)



39. Unknown  
**Saint John**, late thirteenth century  
from Gospel Book  
Tempera colors, gold leaf, gold ink, and ink on parchment  
Leaf: 21 × 14.9 cm (8 1/4 × 5 7/8 in.)  
The J. Paul Getty Museum, Los Angeles  
Ms. 65, fol. 248v (98.MB.151.248v)



40. Unknown  
**Decorated Text Page**, late 13th century  
from Gospel Book  
Tempera colors, gold leaf, gold ink, and ink on parchment  
Leaf: 21 × 14.9 cm (8 1/4 × 5 7/8 in.)  
The J. Paul Getty Museum, Los Angeles  
Ms. 65, fol. 249 (98.MB.151.249)



41. Unknown

[The Adoration of a Golden Image](#), about 1400-1410  
from World Chronicle

Tempera colors, gold, silver paint, and ink on parchment

Leaf: 33.5 × 23.5 cm (13 3/16 × 9 1/4 in.)

The J. Paul Getty Museum, Los Angeles

Ms. 33, fol. 212 (88.MP.70.212)



The J. Paul Getty Museum

October 6, 2016

Additional information about some of these works of art can be found by searching [getty.edu](http://www.getty.edu/art/collection/) at <http://www.getty.edu/art/collection/>

© 2016 J. Paul Getty Trust