



Annabel Lee Enriquez
Project Manager
Getty Conservation Institute
aenriquez@getty.edu

arches™ **Outline**

- ▶ **Project History**
 - ▶ **Inventories**
 - ▶ **Conservation Science: DISCO**
- ▶ **Arches Version 4 Demo**
 - ▶ **Arches Designer**
 - ▶ **Arches Reference Data Manager**



The Getty Conservation Institute



The J. Paul Getty Trust

- ▶ The Getty **Conservation** Institute (GCI)
- ▶ The J. Paul Getty **Museum**
- ▶ The Getty **Research** Institute
- ▶ The Getty **Foundation**

GCI MISSION STATEMENT

The Getty Conservation Institute works to **advance conservation practice** in the visual arts, broadly interpreted to include **objects, collections, architecture, and sites**. It serves the conservation community through...



ArchesTM
heritage inventory & management system



The Getty Conservation Institute



**WORLD
MONUMENTS
FUND**

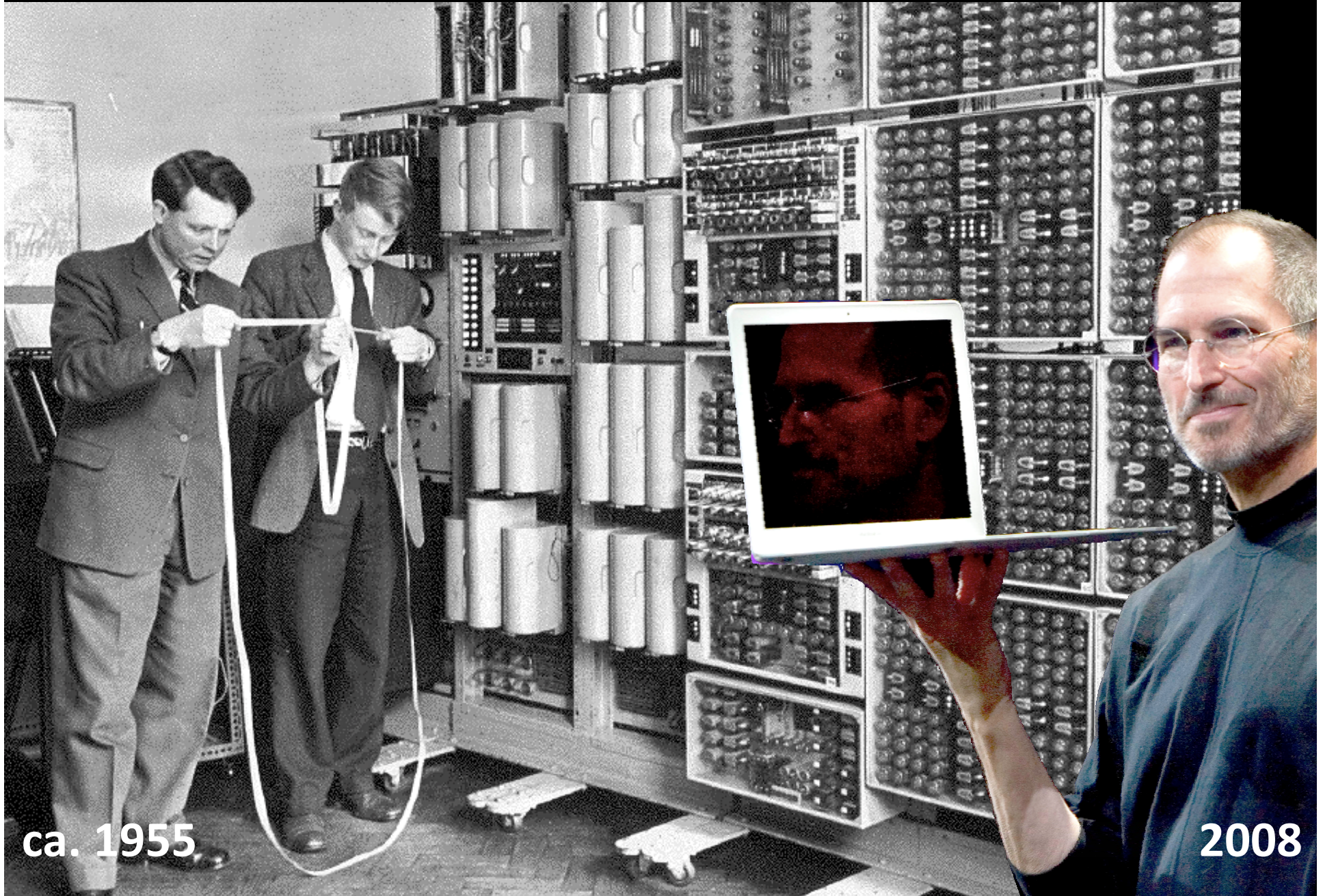


Heritage Inventories





Technology advances...



Data/knowledge
lost forever





Key Requirements

- ▶ software available at **no cost** using **open-source** license
- ▶ **customizable**
- ▶ improvements to be **shared** by all
- ▶ data structured to **protect knowledge** for future

Features

- ▶ **modern, semantically-enabled, web-based with easy-to-use interface**
- ▶ **robust geospatial mapping and processing**
- ▶ **data may be as open or closed as needed**
- ▶ **standards-based to promote data exchange and to ensure data longevity**
 - ▶ **CIDOC-CRM**
- ▶ **Reference Data Manager**

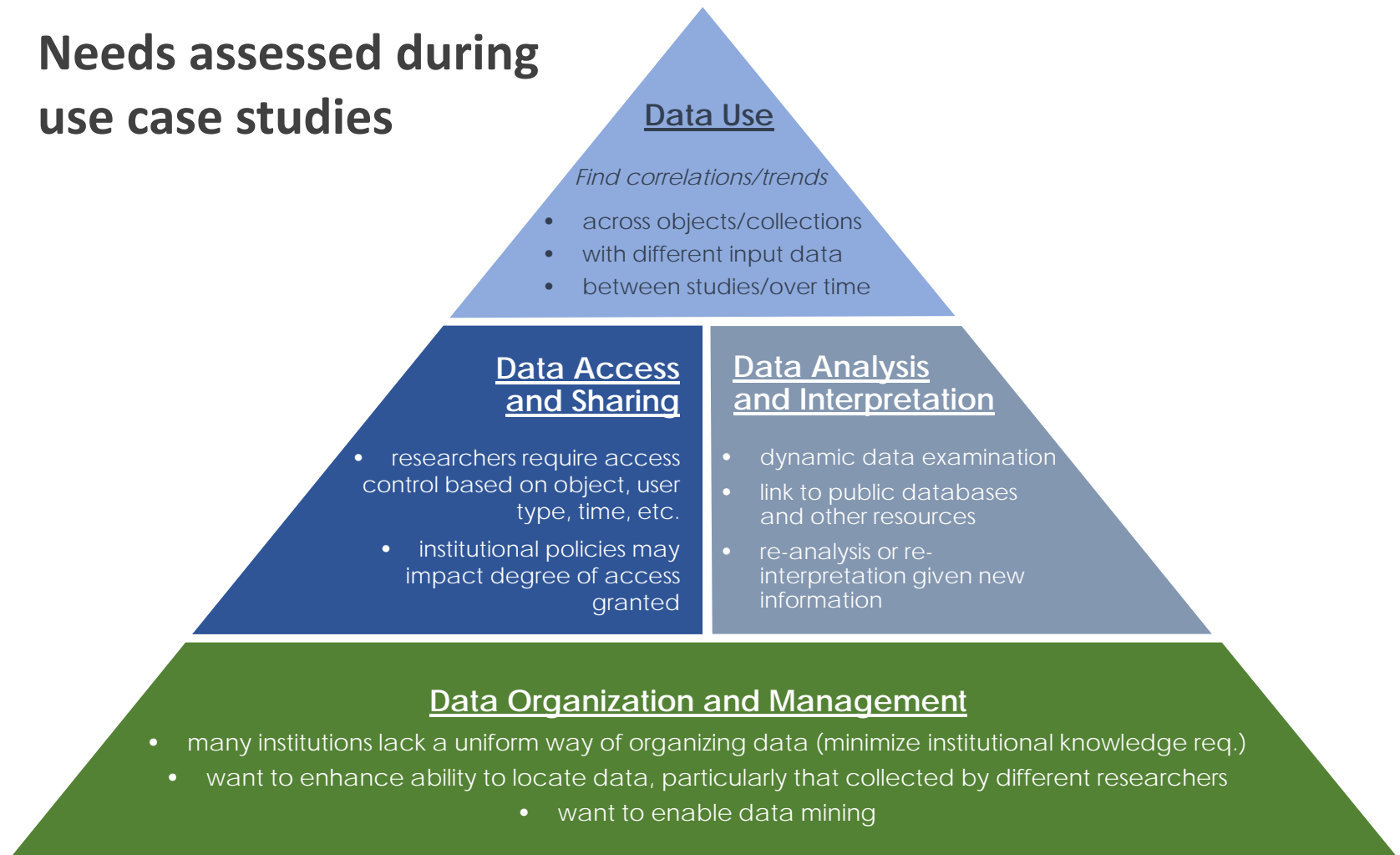
DISCO

DISCO

- ▶ **Data Integration for Conservation Science**
- ▶ **GCI received grant from the Seaver Institute**
- ▶ **Started in 2014**
- ▶ **Development of data integration tools to facilitate sharing of data and analyses from scientific research on cultural heritage**

DISCO

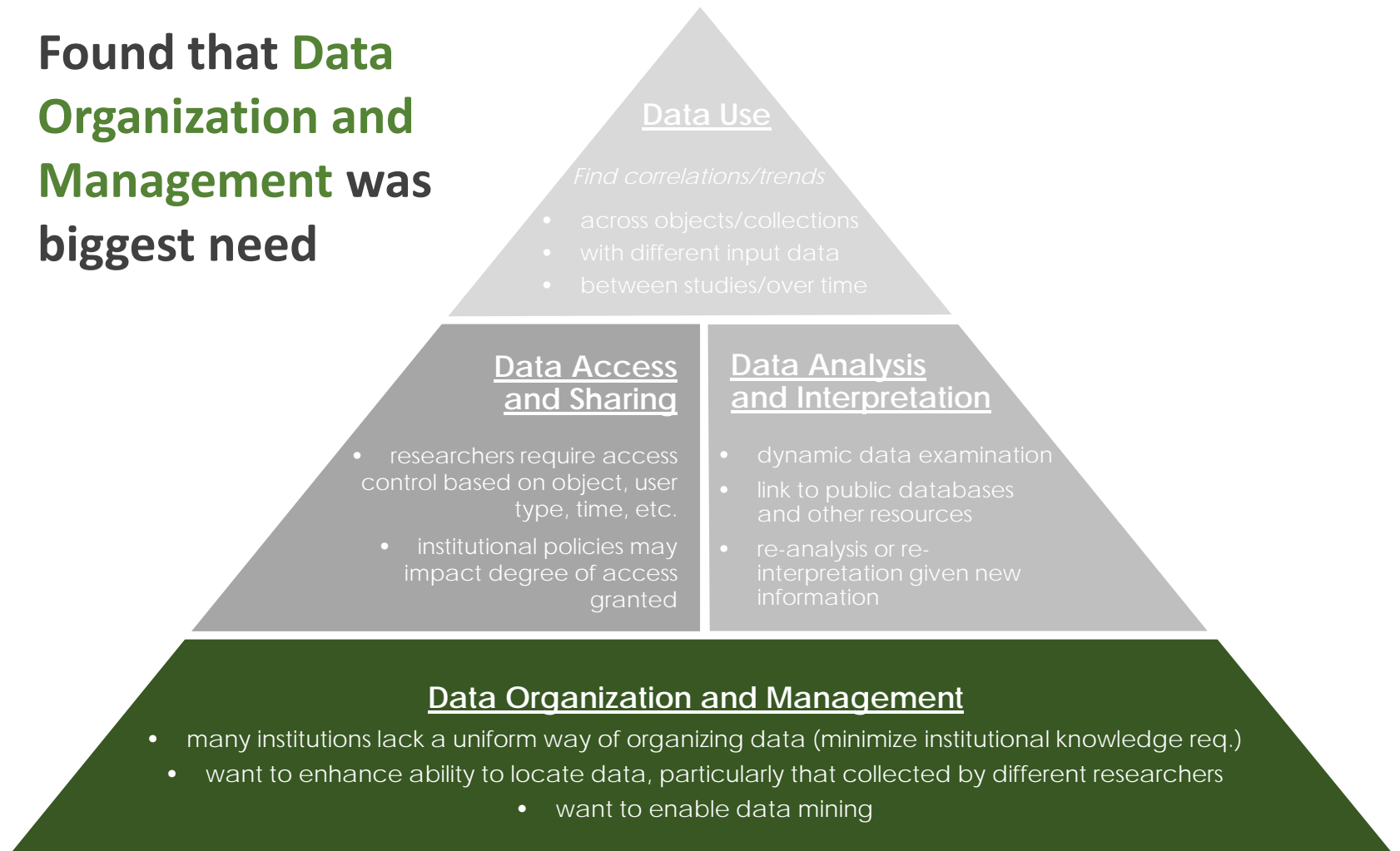
► Needs assessed during use case studies



NEEDS OF THE FIELD

DISCO

- ▶ Found that **Data Organization and Management** was biggest need



NEEDS OF THE FIELD

DISCO prototype requirements

- ▶ **Implements basic data storage, query, and retrieval**
 - ▶ **Implements a data management platform that supports CIDOC CRM ontology**
 - ▶ **Implements controlled vocabularies to enhance searching capabilities**
- ▶ **UI that supports workflows such as creating users and research projects, uploading data and project documents, and managing access rights**
- ▶ **Allows discovery of analytical results across research projects**
- ▶ **Prototype delivery: June 2017**



► Project Timeline



Built Cultural Heritage Inventory Data

DISCO - Conservation Science Data

AATA Online - Bibliographic Data



► Project Timeline



Built Cultural Heritage Inventory Data

Cultural Heritage Data

- Built Heritage Inventories
- Conservation Science Projects
- Bibliographic Data
- Provenance
- Other types

DISCO - Conservation Science Data

AATA Online - Bibliographic Data

 **arches**TM
heritage inventory & management system



 **arches**TM
cultural heritage data management platform



Arches is...

a modern open-source software platform

for cultural heritage organizations

to manage cultural heritage data

Version 4 features

- ▶ **Arches Designer**
- ▶ **Configuration/customization tools**
- ▶ **Map/Imagery Tile Server**

Version 4 features

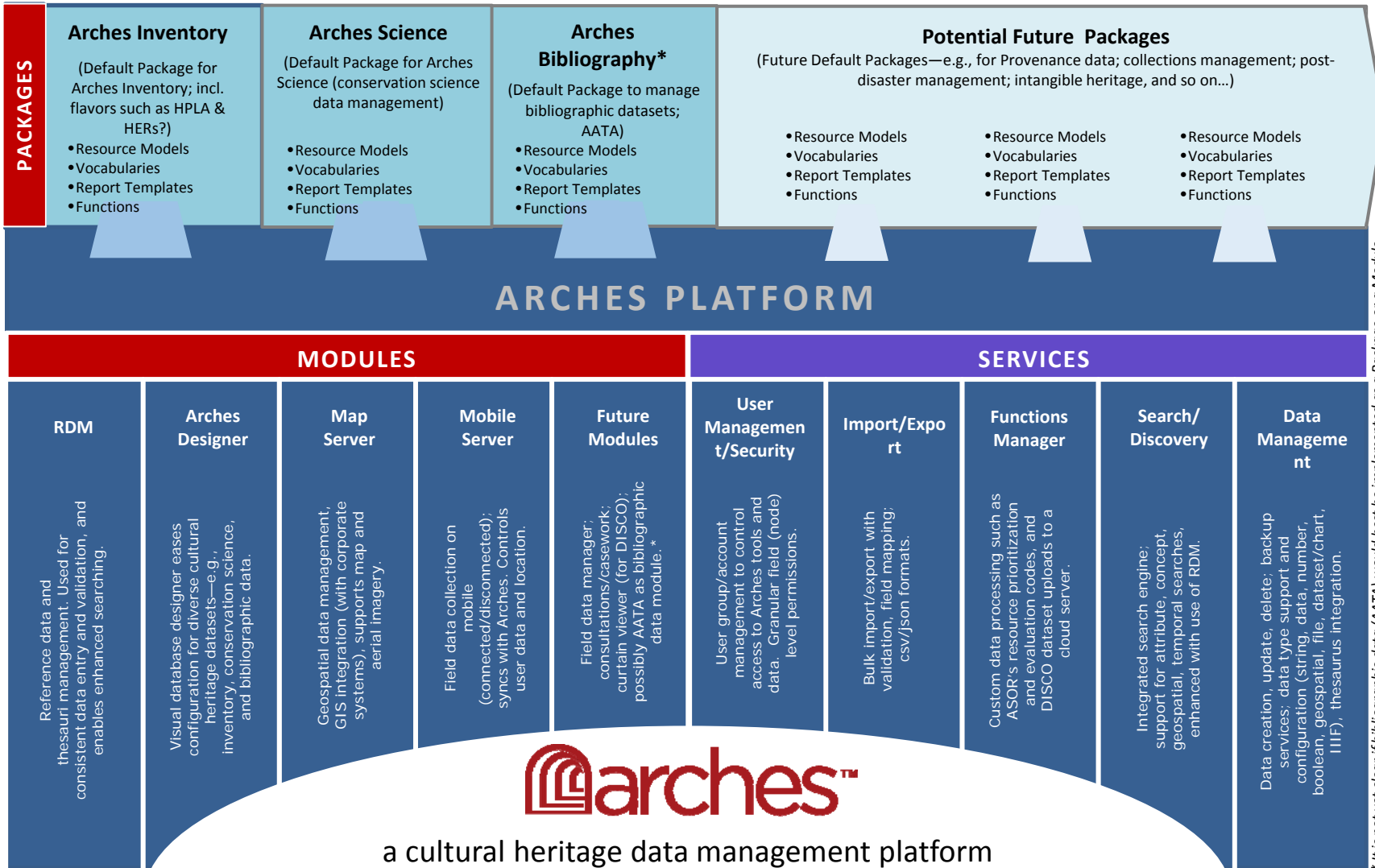
- ▶ **Arches Designer**
 - ▶ **Dynamic Schema Generation**
 - ▶ **Integration of Graphs, Data Entry Forms, Reports, and Reference Data Manager**
- ▶ **Configuration/customization tools**
- ▶ **Map/Imagery Tile Server**



Arches Designer &
Reference Data Manager
Demo

archesTM PLATFORM

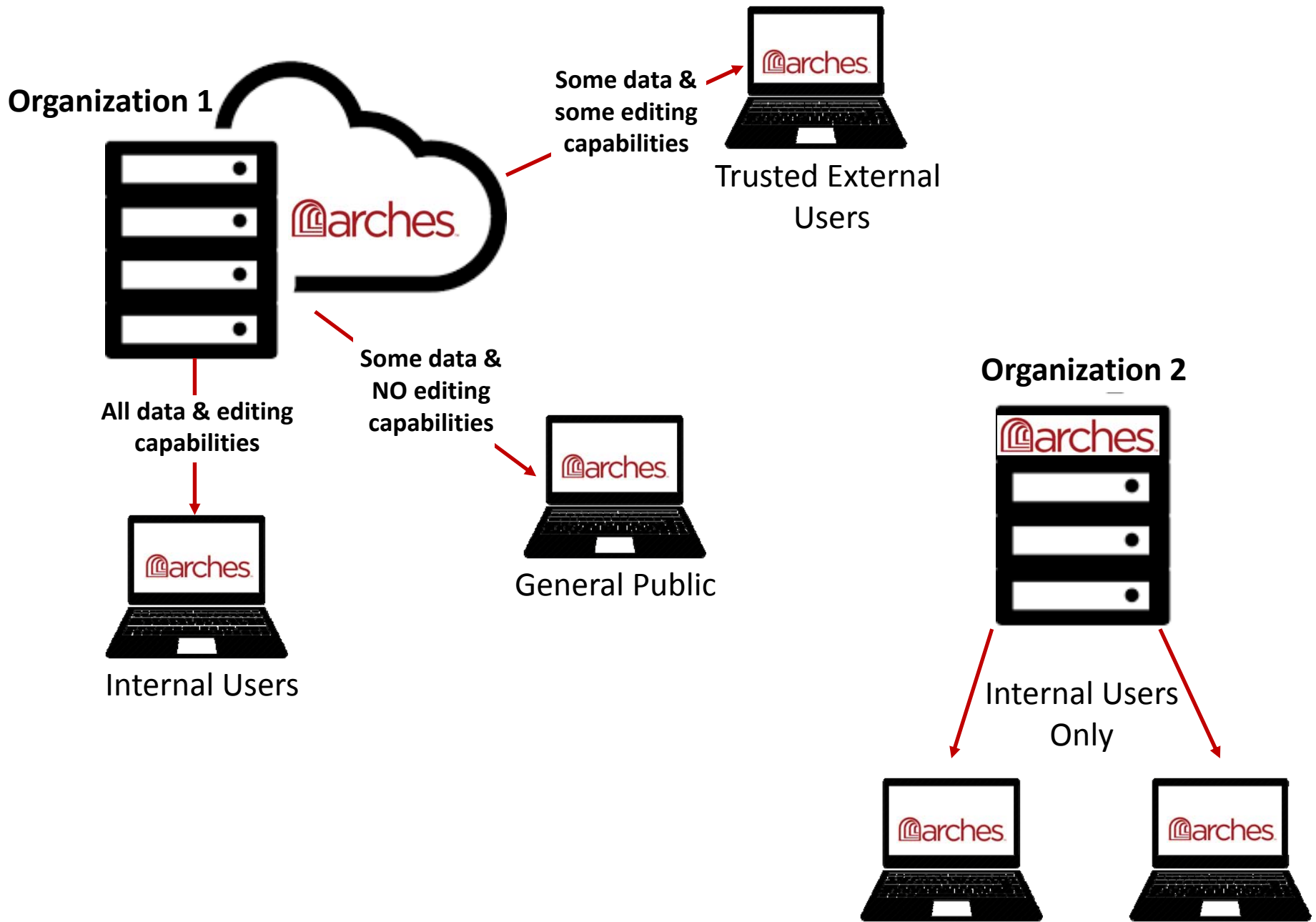
- ▶ **Core functionality**
- ▶ **Data-dependent:**
 - ▶ **Resource Models**
 - ▶ **Vocabularies**
 - ▶ **Report Templates**
 - ▶ **Functions**





What Arches is NOT:

- ▶ **NOT** controlled by any one entity
- ▶ **NOT** one system collecting data from around the world
- ▶ **NOT** a desktop application; it is an enterprise-level system



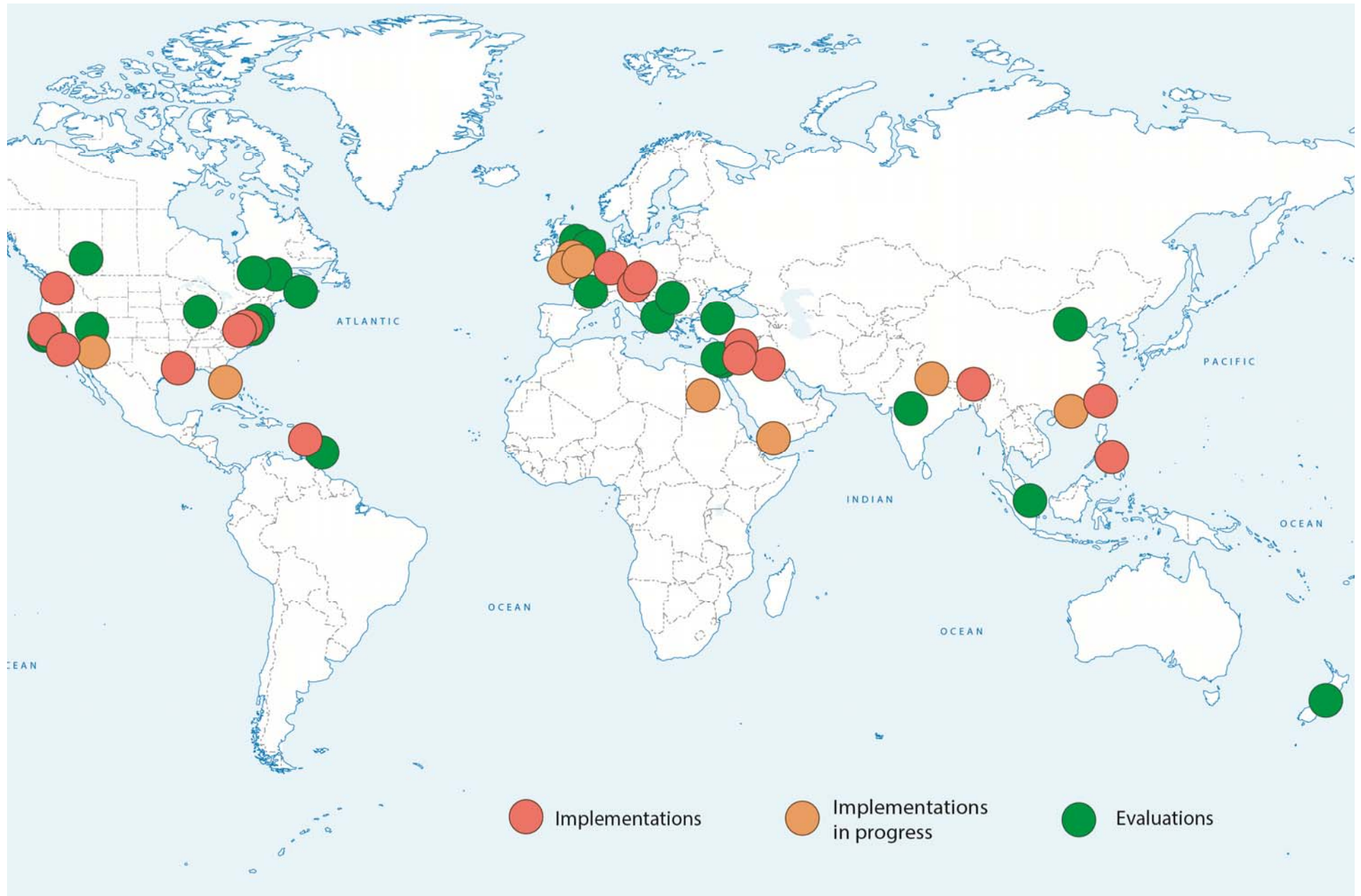
archesTM **Coming soon**

- ▶ **API**
- ▶ **Data-collection app**
- ▶ **Data-collection *project manager***
- ▶ **User profile manager**

Our Work

- ▶ **Arches Inventory**
 - ▶ **Inventory systems in England**
- ▶ **Arches Science (DISCO)**
 - ▶ **GCI Science**
- ▶ **Arches Bibliographic Data – AATA Online**
- ▶ **Arches Resource Model Working Group**

Known **arches inventory** activity (as of June 2017)





www.archesproject.org

<https://github.com/archesproject/arches>

@archesproject